

Price List 2006

Milling



Molienda

粉碎機

Broyer

Zerkleinern

Измельчение

Retsch

Sieving



Filtrado

Sieben

Focce

ふるい振とう機

Tamiser

Assisting



Assister

周辺機器

Asistencia

Assistieren

Вспомогательное оборудование

Retsch[®]

Solutions in Milling & Sieving

PM 100

Solutions in Milling & Sieving

RETSCH is a global company dedicated to providing novel technologies and high quality tools for the sample preparation and characterisation of solids. 90 years of experience have made RETSCH one of the leading manufacturers world-wide.

Milling

RETSCH offers a comprehensive range of state-of-the-art mills and crushers for coarse, fine and ultra-fine size reduction of sample material prior to analysis.

Sieving

For sieve analyses, RETSCH offers analytical sieve shakers and sieves for optimal quality control of solid materials. An evaluation software complements this product line.

Assisting

The RETSCH product range is completed by equipment for representative sample division, material-feeding and thorough drying and cleaning of solid materials.

www.retsch.com

Do you want to learn more about RETSCH? Then visit our website at www.retsch.com. Here you find our videos as well as up-to-date information about products, innovations and events.



With the new operation and application videos RETSCH offers potential buyers all over the world the unique possibility to have first-hand information about mills and sieve shakers conveniently presented on their computer screen, including all necessary details about the design, performance and application areas. The innovative operating concepts are explained in detail and realistic computer animations visualise the functional principles.

View the videos at www.retsch.com. A CD-Rom can be ordered free of charge.

Remarks

- We reserve the right to effect technical changes as well as price adjustments due to technical progress. All listings in our price list are based on our General Terms for Delivery and Payment.
- This price list covers only the current versions of instruments and accessories. Please indicate the type of instrument and serial number when ordering spare parts.
- Instruments with other voltages and frequencies are available upon request. The listed prices are valid for all current voltages.
- Our warranty period is two years from the date of purchase.
- All prices are ex works, excluding packaging and insurance.
- RETSCH price list 99.002.2006/CZ, valid from 1st January 2006.

MILLING

Jaw Crushers	Jaw Crusher	BB 51	Page 4
	Jaw Crusher	BB 100	Page 4
	Jaw Crusher	BB 200	Page 5
	Jaw Crusher	BB 300	Page 5
Rotor Mills	Ultra Centrifugal Mill	ZM 200	Page 6
	Rotor Beater Mill	SR 200	Page 8
	Rotor Beater Mill	SR 300	Page 8
	Cross Beater Mill	SK 100	Page 9
Cutting Mills	Knife Mill Grindomix	GM 200	Page 10
	Heavy-Duty Cutting Mill	SM 2000	Page 10
	Cutting Mill	SM 100	Page 11
Mortar Grinders	Mortar Grinder	RM 100	Page 12
	Mortar Grinder	KM 100	Page 12
	Hand Mortar		Page 12
Disc Mills	Vibratory Disc Mill	RS 100	Page 13
	Disc Mill	DM 200	Page 13
Ball Mills	Mixer Mill	MM 200	Page 14
	Mixer Mill	MM 301	Page 15
	Planetary Ball Mill	PM 100	Page 17
	Planetary Ball Mill	PM 200	Page 17
	Planetary Ball Mill	PM 400	Page 17
	Centrifugal Ball Mill	S 100	Page 18



SIEVING

Sieve Shakers	Sieve Shaker	AS 200	Page 20
	Sieve Shaker	AS 300	Page 20
	Horizontal Sieve Shaker	AS 400	Page 21
Evaluation Software	Software Package	EasySieve®	Page 21
Test Sieves	Sieving Accessories		Page 22
	Selection Guide / Calibration		Page 23
	Test Sieves ISO 3310/1	100 mm Ø – 400 mm Ø	Page 24
	Test Sieves ASTM E 11	100 mm Ø – 400 mm Ø	Page 31
	Test Sieves with perforated plate	200 mm Ø – 400 mm Ø	Page 35



ASSISTING

Sample Dividers	Sample Divider	PT 100	Page 36
	Rotating Tube Divider	PK 1000	Page 36
	Sample Splitter	RT	Page 36
Feeder, Dryer, Cleaner	Vibratory Feeder	DR 100	Page 37
	Rapid Dryer	TG 100	Page 38
	Ultrasonic Baths	UR 1/2/3	Page 38
Pellet Press	Pellet Press	PP 25	Page 38



MILLING

Jaw Crushers

Rotor Mills
Cutting Mills
Mortar Grinders
Disc Mills
Ball Mills



Jaw Crusher BB 51

- for hard and brittle materials
- feed size: up to 35 mm
- final fineness: down to approx. < 0.5 mm



Jaw Crusher BB 100

- for hard, brittle and hard-tough materials
- feed size: up to 50 mm
- final fineness: down to approx. < 4 mm
- with retractable hopper
- incl. connection for dust extraction
- collecting receptacle made of stainless steel

www.retsch.com

JAW CRUSHERS

Retsch

Item No.	weight (kg)	CZK	Item
Jaw Crusher BB 51			
20.056.0006	82.000	239,040.-	BB 51 for 230 V, 50 Hz, breaking jaws of precision-cast manganese steel, wearing plates of stainless steel
20.056.0010	82.000	239,040.-	BB 51 for 110 V, 60 Hz, breaking jaws of precision-cast manganese steel, wearing plates of stainless steel
20.056.0002	82.000	257,920.-	BB 51 for 230 V, 50 Hz, breaking jaws and wearing plates of stainless steel
20.056.0008	82.000	257,920.-	BB 51 for 110 V, 60 Hz, breaking jaws and wearing plates of stainless steel
20.056.0003	84.000	335,360.-	BB 51 for 230 V, 50 Hz, breaking jaws and wearing plates of tungsten carbide
20.056.0005	84.000	335,360.-	BB 51 for 110 V, 60 Hz, breaking jaws and wearing plates of tungsten carbide
20.056.0004	82.000	373,440.-	BB 51 for 230 V, 50 Hz, breaking jaws and wearing plates of zirconium oxide
20.056.0009	82.000	373,440.-	BB 51 for 110 V, 60 Hz, breaking jaws and wearing plates of zirconium oxide

Accessories BB 51

22.048.0014	4.000	20,896.-	Breaking jaws of precision-cast manganese steel, 1 pair
22.048.0012	4.500	22,976.-	Breaking jaws of stainless steel, 1 pair
22.048.0010	5.000	57,600.-	Breaking jaws of tungsten carbide, 1 pair
22.048.0011	3.500	77,760.-	Breaking jaws of zirconium oxide, 1 pair
22.711.0009	2.000	13,568.-	Wearing plates of stainless steel, 1 pair
22.711.0008	3.200	77,760.-	Wearing plates of tungsten carbide, 1 pair
22.711.0007	1.400	98,880.-	Wearing plates of zirconium oxide, 1 pair
05.242.0028	0.200	800.-	V-belt, 1 piece
32.825.0001	0.400	5,728.-	Carry handles, one pair

Jaw Crusher BB 51

for grinding without heavy-metal contamination

20.056.0013	82.000	249,280.-	BB 51 for 230 V, 50 Hz, breaking jaws of steel 1.1750, wearing plates of steel St 1203
20.056.0014	82.000	249,280.-	BB 51 for 110 V, 60 Hz, breaking jaws of steel 1.1750, wearing plates of steel St 1203

Accessories BB 51 for grinding without heavy-metal contamination

22.048.0016	4.000	32,000.-	Breaking jaws of steel 1.1750, 1 pair
22.711.0011	1.400	16,480.-	Wearing plates of steel St 1203, 1 pair

Jaw Crusher BB 100

20.052.0001	143.000	287,680.-	BB 100 for 3/N~ 400 V, 50 Hz, breaking jaws of precision-cast manganese steel
20.052.0003	143.000	287,680.-	BB 100 for 230 V, 50 Hz, breaking jaws of precision-cast manganese steel
20.052.0017	143.000	287,680.-	BB 100 for 110 V, 60 Hz, breaking jaws of precision-cast manganese steel
20.052.0004	143.000	292,480.-	BB 100 for 3/N~ 400 V, 50 Hz, breaking jaws of stainless steel
20.052.0006	143.000	292,480.-	BB 100 for 230 V, 50 Hz, breaking jaws of stainless steel
20.052.0010	143.000	292,480.-	BB 100 for 110 V, 60 Hz, breaking jaws of stainless steel
20.052.0007	145.000	378,240.-	BB 100 for 3/N~ 400 V, 50 Hz, breaking jaws of tungsten carbide
20.052.0009	145.000	378,240.-	BB 100 for 230 V, 50 Hz, breaking jaws of tungsten carbide
20.052.0015	145.000	378,240.-	BB 100 for 110 V, 60 Hz, breaking jaws of tungsten carbide

Accessories BB 100

22.048.0001	4.000	15,360.-	Breaking jaws of precision-cast manganese steel, 1 pair
22.048.0002	4.000	17,504.-	Breaking jaws of stainless steel, 1 pair
22.048.0003	6.000	110,720.-	Breaking jaws of tungsten carbide, 1 pair
22.711.0002	2.000	12,800.-	Wearing plates of stainless steel, 1 pair
22.711.0005	4.000	120,960.-	Wearing plates of tungsten carbide, 1 pair
22.609.0002	4.600	15,104.-	Wheels, 1 set (4 pieces)
22.351.0002	0.500	1,888.-	V-belt, 1 set (3 pieces)

Jaw Crusher BB 100

for grinding without heavy-metal contamination

20.052.0027	143.000	299,200.-	BB 100 for 3/N~ 400 V, 50 Hz, breaking jaws of steel 1.1750, wearing plates of steel St 1203
20.052.0028	143.000	299,200.-	BB 100 for 230 V, 50 Hz, breaking jaws of steel 1.1750, wearing plates of steel St 1203
20.052.0029	143.000	299,200.-	BB 100 for 110 V, 60 Hz, breaking jaws of steel 1.1750, wearing plates of steel St 1203

Accessories BB 100 for grinding without heavy-metal contamination

22.048.0017	4.000	18,752.-	Breaking jaws of steel 1.1750, 1 pair
22.711.0012	2.000	13,536.-	Wearing plates of steel St 1203, 1 pair

Item No.	weight (kg)	CZK	Item
Jaw Crusher BB 200			
20.053.0001	293.000	353,920.-	BB 200 for 3/N~ 400 V, 50 Hz, breaking jaws of precision-cast manganese steel
20.053.0007	293.000	353,920.-	BB 200 for 230 V, 50 Hz, breaking jaws of precision-cast manganese steel
20.053.0002	293.000	365,760.-	BB 200 for 3/N~ 400 V, 50 Hz, breaking jaws of stainless steel
20.053.0008	293.000	365,760.-	BB 200 for 230 V, 50 Hz, breaking jaws of stainless steel
20.053.0003	300.000	566,080.-	BB 200 for 3/N~ 400 V, 50 Hz, breaking jaws of tungsten carbide
20.053.0009	300.000	566,080.-	BB 200 for 230 V, 50 Hz, breaking jaws of tungsten carbide

Jaw Crushers

- Rotor Mills
- Cutting Mills
- Mortar Grinders
- Disc Mills
- Ball Mills



Jaw Crusher BB 200

- for hard, brittle and hard-tough materials
- feed size: up to 90 mm
- final fineness: down to approx. < 2 mm
- with retractable hopper
- incl. connection for dust extraction
- collecting receptacle made of stainless steel

1) Accessories BB 200			
22.048.0004	16.500	24,320.-	Breaking jaws of precision-cast manganese steel, 1 pair
22.048.0005	12.000	30,560.-	Breaking jaws of stainless steel, 1 pair
22.048.0006	18.000	234,240.-	Breaking jaws of tungsten carbide, 1 pair
22.711.0003	5.500	15,680.-	Wearing plates of stainless steel, 1 pair
22.711.0010	10.000	250,880.-	Wearing plates of tungsten carbide, 1 pair
22.481.0023	1.000	8,576.-	Retrofit kit "Central Lubrication"
05.664.0001	0.500	3,872.-	Lubricator
22.351.0003	1.000	2,368.-	V-belt, 1 set (3 pieces)

Jaw Crusher BB 200 for grinding without heavy-metal contamination

20.053.0018	293.000	367,360.-	BB 200 for 3/N~ 400 V, 50 Hz, breaking jaws of steel 1.1750, wearing plates of steel St 1203
20.053.0019	293.000	367,360.-	BB 200 for 230 V, 50 Hz, breaking jaws of steel 1.1750, wearing plates of steel St 1203

1) Accessories BB 200 for grinding without heavy-metal contamination			
22.048.0018	12.000	37,440.-	Breaking jaws of steel 1.1750, 1 pair
22.711.0006	5.500	16,640.-	Wearing plates of steel St 1203, 1 pair



Jaw Crusher BB 300

- for hard, brittle and hard-tough materials
- feed size: up to 150 mm
- final fineness: down to approx. < 5 mm
- with retractable hopper
- incl. connection for dust extraction

2) Jaw Crusher BB 300 (without receptacle)			
20.054.1001	680.000	659,840.-	BB 300 for 3/N~400 V, 50 Hz, breaking jaws of precision-cast manganese steel
20.054.1003	680.000	677,120.-	BB 300 for 3/N~400 V, 50 Hz, breaking jaws of stainless steel

Accessories BB 300			
22.906.0001	9.000	18,144.-	Carriage for receptacle, capacity 150 kg
05.045.0048	4.800	1,984.-	Galvanized steel receptacle, rated volume 27.5 litres
05.045.0049	2.000	1,472.-	Plastic receptacle, rated volume 35.4 litres
22.048.0007	24.500	40,960.-	Breaking jaws of precision-cast manganese steel, 1 pair
22.048.0008	18.000	58,560.-	Breaking jaws of stainless steel, 1 pair
22.711.0004	14.500	36,800.-	Wearing plates of stainless steel, 1 pair
22.481.0024	2.000	13,248.-	Retrofit kit "Central Lubrication"
05.664.0001	0.500	3,872.-	Lubricator
22.351.0004	0.500	5,280.-	V-belt, 1 set (4 pieces)

Jaw Crusher BB 300 for grinding without heavy-metal contamination (without receptacle)

20.054.1006	680.000	682,240.-	BB 300 for 3/N~ 400 V, 50 Hz, breaking jaws of steel 1.1750, wearing plates of steel St 1203
-------------	---------	------------------	--

Accessories BB 300 for grinding without heavy-metal contamination			
22.048.0019	18.000	49,280.-	Breaking jaws of steel 1.1750, 1 pair
22.711.0013	14.500	40,320.-	Wearing plates of steel St 1203, 1 pair

Jaw Crushers BB 200 / 300 for integration into a system at the customer's location with manufacturer's declaration according to EC machine directive with three-phase motor (voltages on request) and central lubrication, without hopper and protective motor switch

20.058.1001	290.000	313,600.-	BB 200 with breaking jaws of precision-cast manganese steel
20.058.1002	290.000	325,440.-	BB 200 with breaking jaws of stainless steel
20.058.1003	297.000	525,760.-	BB 200 with breaking jaws of tungsten carbide
20.057.1001	674.000	615,360.-	BB 300 with breaking jaws of precision-cast manganese steel
20.057.1002	672.000	630,720.-	BB 300 with breaking jaws of stainless steel

1) Frame for combination BB 200/Disc Mill DM 200 (see page 13) upon request

2) BB 300 with tungsten carbide accessories available upon request



MILLING

Jaw Crushers

Rotor Mills

Cutting Mills

Mortar Grinders

Disc Mills

Ball Mills



Ultra Centrifugal Mill ZM 200

- for soft, medium-hard, fibrous and brittle materials
- feed size: up to 10 mm
- final fineness: down to approx. 0.04 mm



Push-fit rotors,
ring and distance sieves

www.retschn.com

ROTOR MILLS

Retsch®

Item No.	weight	app. (kg)	CZK	Item
Ultra Centrifugal Mill ZM 200				
with cassette (900 ml)				
(Please order push-fit rotor and ring sieve separately)				
20.823.0001	38.000		130,880.-	ZM 200 for 230 V, 50/60 Hz
20.823.0002	38.000		130,880.-	ZM 200 for 110 V, 50/60 Hz

Accessories ZM 200				
Push-fit rotors of stainless steel				
1)	02.608.0040	0.500	32,000.-	Push-fit rotor with 6 teeth
	02.608.0041	0.500	32,000.-	Push-fit rotor with 12 teeth
	02.608.0042	0.500	32,000.-	Push-fit rotor with 24 teeth

Ring sieves of stainless steel				
1)	03.647.0231	0.100	3,008.-	Conidur holes 0.08 mm
	03.647.0232	0.100	3,008.-	Conidur holes 0.12 mm
	03.647.0233	0.100	3,008.-	Conidur holes 0.20 mm
	03.647.0234	0.100	3,008.-	Conidur holes 0.25 mm
	03.647.0235	0.100	3,008.-	Conidur holes 0.50 mm
	03.647.0236	0.100	3,008.-	Conidur holes 0.75 mm
	03.647.0237	0.100	3,008.-	Conidur holes 1.00 mm
	03.647.0238	0.100	3,008.-	Conidur holes 1.50 mm
	03.647.0239	0.100	3,008.-	Conidur holes 2.00 mm
	03.647.0240	0.100	3,008.-	Round holes 3.00 mm
	03.647.0241	0.100	3,008.-	Round holes 4.00 mm
	03.647.0242	0.100	3,008.-	Round holes 5.00 mm
	03.647.0243	0.100	3,008.-	Round holes 6.00 mm

Ring sieves of stainless steel, with reinforced rim				
1)	03.647.0244	0.100	6,176.-	Conidur holes 0.08 mm
	03.647.0245	0.100	6,176.-	Conidur holes 0.12 mm
	03.647.0246	0.100	6,176.-	Conidur holes 0.20 mm
	03.647.0247	0.100	6,176.-	Conidur holes 0.25 mm
	03.647.0248	0.100	6,176.-	Conidur holes 0.50 mm
	03.647.0249	0.100	6,176.-	Conidur holes 0.75 mm
	03.647.0250	0.100	6,176.-	Conidur holes 1.00 mm
	03.647.0251	0.100	6,176.-	Conidur holes 1.50 mm
	03.647.0252	0.100	6,176.-	Conidur holes 2.00 mm
	03.647.0272	0.100	6,176.-	Round holes 3.00 mm
	03.647.0273	0.100	6,176.-	Round holes 4.00 mm
	03.647.0274	0.100	6,176.-	Round holes 5.00 mm
	03.647.0275	0.100	6,176.-	Round holes 6.00 mm

Distance sieves of stainless steel				
1)	03.647.0253	0.100	8,448.-	Conidur holes 0.08 mm
	03.647.0254	0.100	8,448.-	Conidur holes 0.12 mm
	03.647.0255	0.100	8,448.-	Conidur holes 0.20 mm
	03.647.0256	0.100	8,448.-	Conidur holes 0.25 mm
	03.647.0257	0.100	8,448.-	Conidur holes 0.50 mm
	03.647.0258	0.100	8,448.-	Conidur holes 0.75 mm
	03.647.0259	0.100	8,448.-	Conidur holes 1.00 mm
	03.647.0260	0.100	8,448.-	Conidur holes 1.50 mm
	03.647.0261	0.100	8,448.-	Round holes 4.00 mm
	03.647.0298	0.100	11,808.-	Square holes 10.00 mm for pre-grinding NEW

Accessories ZM 200 for abrasive products				
Push-fit rotors of stainless steel, with wear resistant coating				
1)	02.608.0043	0.600	50,240.-	Push-fit rotor with 6 teeth
	02.608.0044	0.600	50,240.-	Push-fit rotor with 12 teeth
	02.608.0045	0.600	50,240.-	Push-fit rotor with 24 teeth

Ring sieves of stainless steel, with reinforced rim, with wear resistant coating				
1)	03.647.0262	0.150	11,808.-	Conidur holes 0.20 mm
	03.647.0263	0.150	11,808.-	Conidur holes 0.25 mm
	03.647.0264	0.150	11,808.-	Conidur holes 0.50 mm
	03.647.0265	0.150	11,808.-	Conidur holes 0.75 mm
	03.647.0266	0.150	11,808.-	Conidur holes 1.00 mm
	03.647.0267	0.150	11,808.-	Conidur holes 1.50 mm
	03.647.0268	0.150	11,808.-	Conidur holes 2.00 mm
	03.647.0269	0.150	11,808.-	Round holes 3.00 mm

1) Also suitable for ZM 100

Jaw Crushers

Rotor Mills

Cutting Mills

Mortar Grinders

Disc Mills

Ball Mills

	Item No.	weight (kg)	CZK	Item
--	----------	----------------	-----	------

Accessories ZM 200 for grinding without heavy-metal contamination Rotor and cassette

1)	02.608.0047	0.300	50,240.-	Push-fit rotor with 12 teeth of titanium
	22.355.0006	0.700	32,544.-	Cassette with coating of titanium-niob, complete (pan and cover with sealing)

1) Ring sieves of titanium, with reinforced rim

	03.647.0270	0.100	11,808.-	Conidur holes 0.08 mm
	03.647.0271	0.100	11,808.-	Conidur holes 0.12 mm
	03.647.0276	0.100	11,808.-	Conidur holes 0.20 mm
	03.647.0277	0.100	11,808.-	Conidur holes 0.25 mm
	03.647.0278	0.100	11,808.-	Conidur holes 0.50 mm
	03.647.0279	0.100	11,808.-	Conidur holes 0.75 mm
	03.647.0280	0.100	11,808.-	Conidur holes 1.00 mm
	03.647.0281	0.100	11,808.-	Conidur holes 1.50 mm
	03.647.0282	0.100	11,808.-	Conidur holes 2.00 mm
	03.647.0283	0.100	11,808.-	Round holes 4.00 mm

Accessories ZM 200 for grinding small quantities Rotors and cassettes

	22.786.0002	1.350	40,320.-	Conversion kit for grinding small quantities consisting of push-fit rotor with 8 teeth, labyrinth disc, cassette 50 ml
	02.608.0057	0.350	32,000.-	Push-fit rotor with 8 teeth, corrosion-resistant steel 1.4404 (316), 70 mm Ø
	02.706.0247	0.700	3,680.-	Labyrinth disc
	02.010.0039	0.350	4,800.-	Cassette 50 ml for small quantities, complete (pan, cover, sealing), corrosion resistant steel 1.4404 (316)

Ring sieves of corrosion resistant steel 1.4404 (316), 70 mm Ø

	03.647.0287	0.050	3,008.-	Conidur holes 0.08 mm
	03.647.0288	0.050	3,008.-	Conidur holes 0.12 mm
	03.647.0289	0.050	3,008.-	Conidur holes 0.20 mm
	03.647.0290	0.050	3,008.-	Conidur holes 0.25 mm
	03.647.0285	0.050	3,008.-	Conidur holes 0.50 mm
	03.647.0291	0.050	3,008.-	Conidur holes 0.75 mm
	03.647.0292	0.050	3,008.-	Conidur holes 1.00 mm
	03.647.0293	0.050	3,008.-	Conidur holes 1.50 mm
	03.647.0294	0.050	3,008.-	Conidur holes 2.00 mm

Accessories ZM 200 for grinding large quantities

	22.935.0009	3.200	49,920.-	Cyclone with passage receptacle and holder, with 5 litres collector
	22.935.0010	2.600	49,920.-	Cyclone with passage receptacle and holder, with 3 litres collector
	22.261.0003	1.000	13,056.-	Paper filter bags (12 pieces) with passage receptacle and filter holder

Accessories ZM 200 for automatic material feed

2)	22.936.0001	14.200	52,160.-	Feeding kit DR 100 for 220–240 V, 50 Hz complete with feed attachment with 40 mm push-fit feed chute, length 250 mm, hopper, stand and data cable
2)	22.936.0002	14.200	52,160.-	Feeding kit DR 100 for 110–120 V, 60 Hz complete with feed attachment with 40 mm push-fit feed chute, length 250 mm, hopper, stand and data cable

Additional items ZM 200

	02.010.0037	0.700	3,488.-	Cassette of stainless steel, complete (pan and cover with sealing)
	22.355.0003	0.200	1,728.-	Cassette cover of stainless steel including sealing
	03.010.0037	0.500	1,728.-	Cassette pan of stainless steel, 900 ml
	03.111.0201	0.020	237.-	Sealing for cassette cover
	02.010.0038	0.500	6,816.-	Passage receptacle for cyclone and paper filter bags
	02.011.0029	0.600	5,984.-	Collecting receptacle for cyclone, 5 litres
	02.011.0031	0.850	5,984.-	Collecting receptacle for cyclone, 3 litres
	02.186.0010	0.100	2,368.-	Filter bag of Nylon, for cyclone
	22.524.0001	0.150	608.-	Paper filter bags, 12 pieces
	05.708.0065	0.050	384.-	Protective grating with dust filter for fan
	22.524.0003	0.050	1,184.-	Dust filter for fan (10 pieces)

1) Also suitable for ZM 100

2) Accessories for Feeder DR 100 see page 37



Accessories ZM 200 for grinding small quantities



ZM 200 with cyclone and DR 100



MILLING

Jaw Crushers

Rotor Mills

Cutting Mills

Mortar Grinders

Disc Mills

Ball Mills



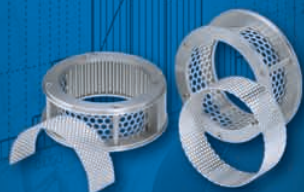
Rotor Beater Mill SR 200

- for soft and medium hard materials
- feed size: up to 15 mm
- final fineness: down to approx. 0.08 mm
- optimized sample outlet
- quick filter hose fixation due to comfort flange



Rotor Beater Mill SR 300

- for soft and medium hard materials
- feed size: up to 15 mm
- final fineness: down to approx. 0.05 mm
- removable stainless steel hopper
- optimized sample outlet
- quick filter hose fixation due to comfort flange



Sieves SR 200 / SR 300

www.retsch.com

ROTOR MILLS

Retsch

Item No.	weight	app. (kg)	CZK	Item
Rotor Beater Mill SR 200 / SR 300				
with rotor, 240 mm filter hose and collecting receptacle				
(Please order retaining frame, sieves and optional base frame SR 200 separately)				
1)				
20.732.0001	50.000		143,360.-	SR 200 for 3/N~ 400 V, 50 Hz, rotor speed 2,850 min ⁻¹ , of cast iron, without base frame
20.732.0003	50.000		143,360.-	SR 200 for 230 V, 50 Hz, rotor speed 2,850 min ⁻¹ , of cast iron, without base frame
20.733.1002	95.000		296,960.-	SR 300 for 3/N~ 400 V, 50 Hz, rotor speed 8,100 min ⁻¹ , of stainless steel, with easily removable stainless steel hopper, incl. base frame
Retaining frames and ring sieves for SR 200 / SR 300				
Retaining frame 360°				
22.642.0002	1.500		11,840.-	Retaining frame for ring sieves 360°, chromium plated
22.642.0001	1.500		22,976.-	Retaining frame for ring sieves 360°, of stainless steel
Ring sieves 360° of stainless steel				
02.407.0057	0.150		3,904.-	Conidur holes 0.08 mm
02.407.0026	0.150		3,904.-	Conidur holes 0.12 mm
02.407.0028	0.150		3,904.-	Conidur holes 0.20 mm
02.407.0029	0.150		3,904.-	Conidur holes 0.25 mm
02.407.0030	0.150		3,904.-	Conidur holes 0.50 mm
02.407.0031	0.150		3,904.-	Conidur holes 0.75 mm
02.407.0032	0.150		3,904.-	Conidur holes 1.00 mm
02.407.0058	0.150		3,904.-	Conidur holes 1.25 mm
02.407.0033	0.150		3,904.-	Conidur holes 1.50 mm
02.407.0034	0.150		3,904.-	Conidur holes 2.00 mm
02.407.0035	0.150		3,904.-	Round holes 3.00 mm
02.407.0036	0.150		3,904.-	Round holes 4.00 mm
02.407.0037	0.150		3,904.-	Round holes 5.00 mm
02.407.0043	0.150		3,904.-	Round holes 6.00 mm
02.407.0039	0.150		3,904.-	Round holes 8.00 mm
02.407.0040	0.150		3,904.-	Round holes 10.00 mm
Retaining frame 180°				
02.143.0014	4.000		48,960.-	Retaining frame with grinding assembly for sieves 180°, stainless steel
Sieves 180° of stainless steel				
03.647.0081	0.100		3,008.-	Conidur holes 0.08 mm
03.647.0039	0.100		3,008.-	Conidur holes 0.12 mm
03.647.0040	0.100		3,008.-	Conidur holes 0.20 mm
03.647.0041	0.100		3,008.-	Conidur holes 0.25 mm
03.647.0042	0.100		3,008.-	Conidur holes 0.50 mm
03.647.0043	0.100		3,008.-	Conidur holes 0.75 mm
03.647.0044	0.100		3,008.-	Conidur holes 1.00 mm
03.647.0045	0.100		3,008.-	Conidur holes 1.25 mm
03.647.0046	0.100		3,008.-	Conidur holes 1.50 mm
03.647.0047	0.100		3,008.-	Conidur holes 2.00 mm
03.647.0048	0.100		3,008.-	Round holes 3.00 mm
03.647.0049	0.100		3,008.-	Round holes 4.00 mm
03.647.0050	0.100		3,008.-	Round holes 5.00 mm
03.647.0051	0.100		3,008.-	Round holes 6.00 mm
03.647.0052	0.100		3,008.-	Round holes 8.00 mm
03.647.0053	0.100		3,008.-	Round holes 10.00 mm
Additional items SR 200 / SR 300				
(see also page 9 below)				
01.824.0028	13.000		16,192.-	Base frame for SR 200
22.609.0003	0.700		2,208.-	Wheels for base frame
22.717.0003	1.500		23,360.-	Distance rotor of stainless steel for SR 200
22.717.0004	1.500		25,600.-	Distance rotor of stainless steel for SR 300
22.717.0001	1.500		23,360.-	Rotor of stainless steel for SR 200
22.717.0002	1.500		25,600.-	Rotor of stainless steel for SR 300
02.602.0026	1.500		25,600.-	Retaining frame for sieve attachment 180°, stainless steel
03.143.0014	2.500		23,360.-	Grinding assembly 180° of stainless steel

1) Vibratory feeder for SR 200 and SR 300 see page 37



Cross beater Mill SK 100 comfort

- for medium hard and brittle materials
- feed size: up to 15 mm
- final fineness: down to approx. 0.1 mm
- optimized sample outlet
- quick filter hose fixation due to comfort flange



Ring-type filter and sieves for SK



Item No.	weight ^{appr.} (kg)	CZK	Item
Cross Beater Mill SK 100 comfort with cross beater, baffle plates, 240 mm filter hose and collecting receptacle (Please order bottom sieve and optional base frame separately)			
grinding assembly cross beater baffle plates			
20.735.0001	38.000	111,360.-	SK 100 comfort for 3/N~ 400 V, 50 Hz, cast iron cast iron chrome steel
20.735.0007	38.000	111,360.-	SK 100 comfort for 230 V, 50 Hz, cast iron cast iron chrome steel
20.735.0010	38.000	111,360.-	SK 100 comfort for 110 V, 60 Hz, cast iron cast iron chrome steel
20.735.0002	38.000	143,360.-	SK 100 comfort for 3/N~ 400 V, 50 Hz, chrome steel cast iron chrome steel
20.735.0008	38.000	143,360.-	SK 100 comfort for 230 V, 50 Hz, chrome steel cast iron chrome steel
20.735.0011	38.000	143,360.-	SK 100 comfort for 110 V, 60 Hz, chrome steel cast iron chrome steel
20.735.0003	38.000	143,360.-	SK 100 comfort for 3/N~ 400 V, 50 Hz, stainless steel stainless steel stainless steel
20.735.0009	38.000	143,360.-	SK 100 comfort for 230 V, 50 Hz, stainless steel stainless steel stainless steel
20.735.0012	38.000	143,360.-	SK 100 comfort for 110 V, 60 Hz, stainless steel stainless steel stainless steel

Bottom sieves SK 100 comfort

Bottom sieves of stainless steel

02.407.0059	0.100	2,816.-	Conidur holes 0.12 mm
02.407.0013	0.100	2,816.-	Conidur holes 0.20 mm
02.407.0001	0.100	2,816.-	Conidur holes 0.25 mm
02.407.0002	0.100	2,816.-	Conidur holes 0.50 mm
02.407.0003	0.100	2,816.-	Conidur holes 0.75 mm
02.407.0004	0.100	2,816.-	Conidur holes 1.00 mm
02.407.0005	0.100	2,816.-	Conidur holes 1.50 mm
02.407.0006	0.100	2,816.-	Conidur holes 2.00 mm
02.407.0007	0.100	2,816.-	Round holes 3.00 mm
02.407.0008	0.100	2,816.-	Round holes 4.00 mm
02.407.0009	0.100	2,816.-	Round holes 5.00 mm
02.407.0010	0.100	2,816.-	Round holes 6.00 mm
02.407.0011	0.100	2,816.-	Round holes 8.00 mm
02.407.0012	0.100	2,816.-	Round holes 10.00 mm

Cross Beater Mill SK 100 comfort

for grinding without heavy-metal contamination

with cross beater, baffle plates, 240 mm filter hose and collecting receptacle

(Please order bottom sieve and optional base frame separately)

			grinding assembly	cross beater	baffle plates
20.735.1001	38.000	111,360.-	SK 100 comfort for 3/N~ 400 V, 50 Hz, cast iron	cast iron	steel 1.1740
20.735.1007	38.000	111,360.-	SK 100 comfort for 230 V, 50 Hz, cast iron	cast iron	steel 1.1740
20.735.1010	38.000	111,360.-	SK 100 comfort for 110 V, 60 Hz, cast iron	cast iron	steel 1.1740

Bottom sieves of steel St 1203 for grinding without heavy-metal contamination

02.407.0083	0.100	2,816.-	Conidur holes 0.12 mm
02.407.0084	0.100	2,816.-	Conidur holes 0.20 mm
02.407.0085	0.100	2,816.-	Conidur holes 0.25 mm
02.407.0086	0.100	2,816.-	Conidur holes 0.50 mm
02.407.0087	0.100	2,816.-	Conidur holes 1.00 mm
02.407.0088	0.100	2,816.-	Conidur holes 2.00 mm

Additional items SK 100 comfort

01.824.0028	13.000	16,192.-	Base frame for SR 200, SK 100
22.609.0003	0.700	2,208.-	Wheels for base frame
22.443.0001	5.000	10,592.-	Grinding assembly of cast iron
22.443.0002	5.000	43,200.-	Grinding assembly of chrome steel
22.443.0003	5.000	43,200.-	Grinding assembly of stainless steel
22.716.0001	1.000	6,720.-	Cross beater of cast iron
22.716.0002	1.000	11,840.-	Cross beater of stainless steel
22.526.0001	1.000	3,328.-	Baffle plates of chrome steel, 3 pieces
22.526.0002	1.000	3,328.-	Baffle plates of stainless steel, 3 pieces
22.526.0006	1.000	5,920.-	Baffle plates of steel 1.1740, 3 pieces

Additional items SR 200 / SR 300 / SK 100 comfort

22.187.0001	1.100	18,432.-	Ring-type filter with conidur hole body for collecting receptacle 5 litres
22.748.0001	0.250	2,304.-	Dust-filter clamping rings for ring-type filter, incl. 5 dust-filters
22.524.0002	0.200	3,200.-	Dust-filters for ring-type filter, 25 pieces
01.011.0023	1.500	6,400.-	Collecting receptacle of stainless steel, 5 litres
22.187.0003	1.500	12,160.-	Filter hose for collecting receptacle 5 litres, length 240 mm, incl. comfort flange
02.186.0027	0.200	1,600.-	Spare filter hose for 22.187.0003
22.003.0001	3.000	6,816.-	Collecting receptacle 30 litres
01.186.0013	0.500	2,304.-	Filter hose for collecting receptacle 30 litres, length 490 mm for SK 100
22.704.0001	0.500	1,824.-	Dirt collecting pan of plastic
03.241.0006	0.010	170.-	Door sealing SK 100

¹⁾ Vibratory feeder for SK 100 comfort see page 37

MILLING

Jaw Crushers
Rotor Mills

Cutting Mills

Mortar Grinders

Disc Mills

Ball Mills



Grindomix GM 200

- for water, fat or oil containing and dry materials
- feed size: 10-40 mm
- final fineness: approx. < 0.3 mm



Heavy-Duty Cutting Mill SM 2000

- for bulky, soft, fibrous and tough materials
- feed size: up to 80 x 60 mm
- final fineness: down to approx. 0.25-20 mm
- optimized sample outlet

www.retsch.com

CUTTING MILLS

Retsch®

Item No.	weight (kg)	CZK	Item
Knife Mill Grindomix GM 200 complete with 1 litre receptacle and cover of PP and knife made of stainless steel			
20.251.0001	8.000	63,680.-	GM 200 for 230 V, 50/60 Hz
20.251.0003	8.000	63,680.-	GM 200 for 100-120 V, 50/60 Hz
Accessories GM 200			
03.045.0047	0.120	1,120.-	Cutting container of PP, 1 litre
03.045.0046	0.450	13,824.-	Cutting container of glass, 1 litre
03.045.0050	0.450	8,256.-	Cutting container of stainless steel, 1 litre
03.107.0309	0.020	544.-	Standard lid of PP for cutting container of PP, glass or steel
02.107.0323	0.530	5,216.-	Gravity lid of PP with overflow channels for cutting container of PP
02.107.0308	0.530	5,216.-	Gravity lid of PP with overflow channels for cutting container of glass or steel
02.107.0327	0.700	3,168.-	Gravity lid of PP for cutting container of PP
02.107.0328	0.700	3,168.-	Gravity lid of PP for cutting container of glass or steel
03.107.0310	0.200	1,280.-	Lid of PP for chamber reduction to 0.5 litres for cutting container of PP
05.723.0001	0.030	320.-	Scraper
02.446.0014	0.100	2,592.-	Knife of stainless steel

Heavy-Duty Cutting Mill SM 2000 with collecting receptacle and base frame (Please order rotor, hopper and bottom sieve separately, see page 11)			
20.722.0002	119.000	221,120.-	SM 2000 for 3/N~ 400 V, 50 Hz, rotor speed 695 min ⁻¹
20.722.0009	88.000	221,120.-	SM 2000 for 3/N~ 400 V, 50 Hz, rotor speed 1390 min ⁻¹
20.722.0003	119.000	221,120.-	SM 2000 for 3 x 220 V, 60 Hz, rotor speed 835 min ⁻¹
20.722.0010	88.000	221,120.-	SM 2000 for 3 x 220 V, 60 Hz, rotor speed 1690 min ⁻¹

Rotors SM 2000			
22.608.0005	5.650	57,600.-	6-disc rotor for versions 695- 835 min ⁻¹ , with reversible cutting tips of hard metal
22.608.0006	5.650	57,600.-	6-disc rotor for versions 1390-1690 min ⁻¹ , with reversible cutting tips of hard metal
22.608.0007	4.300	56,000.-	Parallel section rotor for versions 1390-1690 min ⁻¹
22.608.0009	4.300	56,000.-	Parallel section rotor for versions 695- 835 min ⁻¹

Accessories SM 2000			
22.908.0001	0.150	8,288.-	Reversible cutting tips of hard metal, 10 pieces, for 6-disc rotor
22.151.0001	0.100	10,304.-	Cutting plates of chrome steel for parallel section rotor, 1 set (3 pieces)
22.152.0001	0.170	14,816.-	Stationary cutting bars of stainless steel, 1 set (4 pieces)
22.905.0001	2.000	7,520.-	Receptacle for bottom sieves or tools
03.241.0061	0.004	122.-	Door sealing SM 2000

Heavy-Duty Cutting Mill SM 2000 for grinding without heavy-metal contamination with collecting receptacle and base frame (Please order rotor, hopper and bottom sieve separately, see page 11)			
20.721.0102	119.000	221,120.-	SM 2000 for 3/N~ 400 V, 50 Hz, rotor speed 695 min ⁻¹
20.721.0109	88.000	221,120.-	SM 2000 for 3/N~ 400 V, 50 Hz, rotor speed 1390 min ⁻¹
20.721.0103	119.000	221,120.-	SM 2000 for 3 x 220 V, 60 Hz, rotor speed 835 min ⁻¹
20.721.0110	88.000	221,120.-	SM 2000 for 3 x 220 V, 60 Hz, rotor speed 1690 min ⁻¹

Rotors SM 2000 for grinding without heavy-metal contamination			
22.608.0013	5.650	57,600.-	6-disc-rotor of steel ST 52 or versions 695-835 min ⁻¹ , with reversible cutting tips of hard metal
22.608.0014	5.650	57,600.-	6-disc-rotor of steel ST 52 for versions 1390-1690 min ⁻¹ , with reversible cutting tips of hard metal
22.608.0011	4.300	56,000.-	Parallel section rotor of steel ST 52 for versions 695- 835 min ⁻¹ , with knives of steel 1.1740
22.608.0010	4.300	56,000.-	Parallel section rotor of steel ST 52 for versions 1390-1690 min ⁻¹ , with knives of steel 1.1740

Accessories SM 2000 for grinding without heavy-metal contamination			
22.908.0001	0.150	8,288.-	Reversible cutting tips of hard metal, 10 pieces, for 6-disc rotor
22.151.0002	0.100	10,304.-	Knives of steel 1.1740 for parallel section rotor, 1 set (3 pieces)
22.152.0002	0.100	14,688.-	Stationary cutting bars of steel 1.1740, 1 set (4 pieces)

Item No.	weight	appr. (kg)	CZK	Item
----------	--------	------------	-----	------

Cutting Mill SM 100 comfort

with parallel section rotor of stainless steel, filter hose and collecting receptacle
(Please order hopper, bottom sieve and optional base frame separately)

20.734.0101	45.000	140,480.-		SM 100 comfort for 230 V, 50 Hz
20.734.0103	45.000	140,480.-		SM 100 comfort for 3/N~ 400 V, 50 Hz
20.734.0104	45.000	140,480.-		SM 100 comfort for 110 V, 60 Hz

Accessories SM 100

01.824.0028	13.000	16,192.-		Base frame for SM 100
22.609.0003	0.700	2,208.-		Wheels for base frame SM 100, 1 set
22.608.0008	4.300	32,960.-		Parallel section rotor of stainless steel with cutting plates of chrome steel
22.151.0001	0.100	10,304.-		Cutting plates of chrome steel for parallel section rotor, 1 set (3 pieces)
22.152.0001	0.100	14,816.-		Stationary cutting bars of stainless steel, 1 set (4 pieces)
03.241.0105	0.100	103.-		Door sealing SM 100

Cutting Mill SM 100 comfort

for grinding without heavy-metal contamination
with parallel section rotor of steel ST 52, filter hose and collecting receptacle
(Please order hopper, bottom sieve and optional base frame separately)

20.734.0112	45.000	146,240.-		SM 100 comfort for 3/N~ 400 V, 50 Hz, material 1.1740 – including rotor ST 52
20.734.0114	45.000	146,240.-		SM 100 comfort for 230 V, 50 Hz, material 1.1740 – including rotor ST 52

Accessories SM 100 for grinding without heavy-metal contamination

22.608.0012	4.300	32,960.-		Parallel section rotor of steel ST 52
22.151.0002	0.100	10,304.-		Cutting plates of steel 1.1740 for parallel section rotor, 1 set (3 pieces)
22.152.0002	0.100	14,816.-		Stationary cutting bars of steel 1.1740, 1 set (4 pieces)

Accessories SM 100 / SM 2000

Hoppers

01.747.0040	7.700	20,512.-		Standard hopper
22.408.0001	3.000	20,512.-		Long stock hopper
22.730.0001	2.300	20,512.-		Cascade hopper for bulk materials

Bottom sieves of stainless steel

03.647.0168	0.110	3,008.-		Conidur holes 0.25 mm
03.647.0169	0.110	3,008.-		Conidur holes 0.50 mm
03.647.0170	0.110	3,008.-		Conidur holes 0.75 mm
03.647.0171	0.110	3,008.-		Conidur holes 1.00 mm
03.647.0172	0.110	3,008.-		Conidur holes 1.50 mm
03.647.0167	0.110	3,008.-		Square holes 2.00 mm
03.647.0020	0.100	3,008.-		Square holes 4.00 mm
03.647.0022	0.100	3,008.-		Square holes 6.00 mm
03.647.0023	0.100	3,008.-		Square holes 8.00 mm
03.647.0024	0.100	3,008.-		Square holes 10.00 mm
03.647.0062	0.100	4,896.-		Square holes 20.00 mm

Bottom sieves of steel ST 1203 for grinding without heavy-metal contamination

03.647.0003	0.100	3,008.-		Conidur holes 0.50 mm
03.647.0004	0.100	3,008.-		Conidur holes 0.75 mm
03.647.0005	0.100	3,008.-		Conidur holes 1.00 mm
03.647.0211	0.100	3,008.-		Square holes 4.00 mm

Additional items SM 2000

22.725.0002	5.000	15,328.-		Plunger of plastic for standard hopper
22.725.0003	7.900	23,328.-		Plunger of aluminium for standard hopper
22.003.0006	2.000	8,000.-		Collecting unit 250/500 ml incl. 2 wide mouth bottles NEW
22.187.0001	1.100	18,432.-		Ring-type filter with conidur hole body for collecting receptacle 5 litres
22.748.0001	0.250	2,304.-		Dust-filter clamping rings for ring-type filter, incl. 5 dust-filters
22.524.0002	0.200	3,200.-		Dust-filters for ring-type filter, 25 pieces
01.011.0023	1.500	6,400.-		Collecting receptacle of stainless steel, 5 litres
22.187.0003	1.500	12,160.-		Filter hose for collecting receptacle 5 litres, length 240 mm, incl. comfort flange
02.186.0027	0.200	1,600.-		Spare filter hose for 22.187.0003
22.003.0001	3.000	6,816.-		Collecting receptacle of plastic, 30 litres
01.186.0013	0.500	2,304.-		Filter hose for collecting receptacle 30 litres, length 490 mm
22.704.0001	0.500	1,824.-		Dirt collecting pan of plastic
03.111.0002	0.002	212.-		Sealing for hopper SM 100 / SM 2000

MILLING

Jaw Crushers

Rotor Mills

Cutting Mills

Mortar Grinders

Disc Mills

Ball Mills



Cutting Mill SM 100

- for bulky, soft, fibrous and tough materials
- feed size: up to 80 x 60 mm
- final fineness: down to approx. 0.25–20 mm
- optimized sample outlet
- quick filter hose fixation due to comfort flange



MILLING

Jaw Crushers
Rotor Mills
Cutting Mills

Mortar Grinders

Disc Mills
Ball Mills



Mortar Grinder RM 100

- for soft, hard and brittle materials
- feed size: up to 8 mm
- final fineness: down to approx. 0.01 mm
- batch: max. 50-150 ml



Mortar Grinder KM 100

- for soft, hard and brittle materials
- feed size: up to 10 mm
- final fineness: down to approx. 0.03 mm
- batch: max. 50-300 ml



Hand Mortar

www.retsch.com

MORTAR GRINDERS

Retsch

Item No.	weight	app. (kg)	CZK	Item
Mortar Grinder RM 100 (Please order mortar and pestle separately)				
20.452.0001	25.000		95,360.-	RM 100 for 230 V, 50 Hz
20.452.0003	25.000		95,360.-	RM 100 for 110 V, 60 Hz

Mortar and pestle RM 100				
02.460.0018	3.500		23,552.-	Mortar chrome steel
03.461.0041	1.600		8,448.-	Pestle chrome steel
02.460.0057	3.500		33,920.-	Mortar stainless steel
03.461.0009	1.600		10,336.-	Pestle stainless steel
02.460.0021	4.800		141,760.-	Mortar tungsten carbide
05.461.0027	2.100		56,640.-	Pestle tungsten carbide
01.460.0019	1.600		47,040.-	Mortar agate
02.461.0010	0.500		14,976.-	Pestle agate
02.460.0017	1.800		35,200.-	Mortar sintered aluminium oxide
02.461.0008	0.700		9,280.-	Pestle sintered aluminium oxide
02.460.0086	4.000		77,760.-	Mortar zirconium oxide
02.461.0097	1.000		14,784.-	Pestle zirconium oxide
02.460.0016	1.600		12,000.-	Mortar hard porcelain
02.461.0007	0.600		8,448.-	Pestle hard porcelain
05.008.0017	0.020		1,120.-	Scraper of beech wood
05.862.0009	0.020		608.-	Scraper of vulkollan ¹⁾
03.008.0021	0.020		3,328.-	Scraper of PTFE (e.g. for cryogenic grinding)

Mortar Grinder KM 100				
(Please order mortar and pestle separately)				
20.453.0001	110.000		224,960.-	KM 100 for 3/N~ 400 V, 50 Hz
20.453.0003	110.000		224,960.-	KM 100 for 230 V, 50 Hz

Mortar and pestle KM 100				
02.460.0005	14.000		58,240.-	Mortar chrome steel
02.461.0005	8.500		30,368.-	Pestle chrome steel
01.460.0059	6.500		216,640.-	Mortar agate
02.461.0006	3.600		41,600.-	Pestle agate
02.460.0004	7.500		101,440.-	Mortar sintered aluminium oxide
02.461.0004	4.500		48,960.-	Pestle sintered aluminium oxide
02.460.0087	11.000		211,840.-	Mortar zirconium oxide
02.461.0098	6.500		68,800.-	Pestle zirconium oxide
02.460.0003	4.500		32,320.-	Mortar hard porcelain
02.461.0003	2.700		17,376.-	Pestle hard porcelain
05.008.0018	0.060		2,240.-	Scraper of beech wood
05.862.0008	0.060		1,600.-	Scraper of vulkollan

1) Hand Mortar with pestle, made of agate						
			volume (ml)	outside-Ø (mm)	inside-Ø (mm)	
20.262.0001	0.070	1,632.-	8	40	30	
20.262.0002	0.080	1,600.-	10	50	40	
20.262.0003	0.150	2,112.-	16	60	50	
20.262.0004	0.250	2,624.-	25	70	55	
20.262.0005	0.360	3,648.-	30	80	65	
20.262.0006	0.750	6,592.-	50	100	85	
20.262.0007	0.900	8,000.-	80	110	95	
20.262.0008	1.250	14,240.-	130	130	110	
20.262.0009	1.800	23,648.-	180	150	130	
20.262.0010	3.200	43,200.-	300	175	145	

1) Spare pestle: 25 % of list price of relevant mortar

Item No.	weight (kg)	CZK	Item
----------	-------------	-----	------

Vibratory Disc Mill RS 100

on wheels
(Please order grinding set separately)

20.724.0003	245.000	286,400.-	RS 100 for 3/N~ 400 V, 50 Hz, pole-changing 700 or 1400 min ⁻¹
20.724.0002	245.000	286,400.-	RS 100 for 3 x 220 V, 60 Hz, pole-changing 700 or 1400 min ⁻¹

Grinding set RS 100

(Indication = Useful volume in ml)

01.462.0170	5.400	28,864.-	Grinding set chrome steel 50 ml
01.462.0171	9.400	35,840.-	Grinding set chrome steel 100 ml
01.462.0172	8.500	49,600.-	Grinding set chrome steel 250 ml
01.462.0177	7.300	116,800.-	Grinding set tungsten carbide 50 ml
01.462.0176	15.500	180,480.-	Grinding set tungsten carbide 100 ml
01.462.0178	4.400	88,640.-	Grinding set agate 50 ml (only for 700 min ⁻¹)
01.462.0179	6.000	133,440.-	Grinding set agate 100 ml (only for 700 min ⁻¹)
01.462.0193	6.000	97,280.-	Grinding set zirconium oxide 50 ml
01.462.0192	9.500	133,760.-	Grinding set zirconium oxide 100 ml

Grinding set RS 100 for grinding without heavy-metal contamination

01.462.0210	8.700	49,600.-	Grinding set steel 1.1740 250 ml
-------------	-------	-----------------	----------------------------------

Additional items RS 100

05.114.0075	0.005	170.-	Viton ring for grinding set 50 ml, steel
05.114.0069	0.005	170.-	Viton ring for grinding set 50 ml, agate, zirconium oxide
05.114.0068	0.010	186.-	Viton ring for grinding set 50 ml, tungsten carbide
05.114.0067	0.010	186.-	Viton ring for grinding set 100 ml, steel, tungsten carbide, zirconium oxide
05.114.0070	0.010	186.-	Viton ring for grinding set 100 ml, agate
05.114.0076	0.010	208.-	Viton ring for grinding set 250 ml, steel

Disc Mill DM 200

(Please order grinding discs separately)

20.740.0001	140.000	301,120.-	DM 200 for 3/N-400 V, 50/60 Hz
20.740.0002	140.000	301,120.-	DM 200 for 3 x 220-230 V, 50 Hz

1)

Accessories DM 200

22.456.0002	8.300	49,600.-	Set of grinding discs, made of manganese steel 1 pair
22.456.0001	9.500	33,600.-	Set of grinding discs, made of hardened steel 1 pair
22.456.0003	19.000	345,920.-	Set of grinding discs, made of tungsten carbide 1 pair
22.456.0004	7.100	205,120.-	Set of grinding discs, made of zirconium oxide 1 pair
22.481.0025	0.125	4,800.-	Connector for dust extraction



Pellet press with accessories for the preparation of samples for the X-ray fluorescence analysis (XRF) see page 38

1) Frame for combination Disc Mill DM 200/Jaw Crusher BB 200 (see page 5) upon request



Vibratory Disc Mill RS 100

- for medium-hard, brittle and hard-tough materials
- feed size: up to 15 mm
- final fineness: down to approx. 0.04 mm



Disc Mill DM 200

- for hard and brittle materials
- feed size: up to 20 mm
- final fineness: down to approx. 0.1 mm



MILLING

Jaw Crushers
Rotor Mills
Cutting Mills
Mortar Grinders
Disc Mills
Ball Mills



Mixer Mill MM 200

- for soft, medium hard and brittle materials
- feed size: up to 6 mm
- final fineness: down to approx. 0.01 mm



Grinding jars and balls MM 200

BALL MILLS

Retsch

Item No.	weight	appr. (kg)	CZK	Item
Mixer Mill MM 200				
(Please order grinding jars and balls separately, grinding balls see page 16)				
20.738.0001	20.000		104,000.-	MM 200 for 220-240 V, 50/60 Hz
20.738.0004	20.000		104,000.-	MM 200 for 110 V, 50/60 Hz
Grinding jars MM 200				
Chrome steel				
02.462.0056	0.030		5,440.-	1.5 ml
02.462.0058	0.045		6,240.-	5 ml
02.462.0060	0.105		6,624.-	10 ml
02.462.0052	0.180		8,416.-	25 ml
Stainless steel				
02.462.0057	0.030		5,856.-	1.5 ml
02.462.0059	0.045		6,464.-	5 ml
02.462.0061	0.105		7,008.-	10 ml
02.462.0119	0.250		9,408.-	25 ml
Tungsten carbide				
01.462.0114	0.110		13,792.-	1.5 ml
01.462.0115	0.185		17,600.-	5 ml
01.462.0009	0.340		27,168.-	10 ml
Agate				
01.462.0112	0.020		9,824.-	1.5 ml
01.462.0113	0.050		12,000.-	5 ml
01.462.0008	0.095		13,792.-	10 ml
Sintered aluminium oxide				
01.462.0110	0.025		8,608.-	1.5 ml
01.462.0111	0.050		11,200.-	5 ml
01.462.0007	0.095		12,576.-	10 ml
Zirconium oxide				
01.462.0194	0.150		21,184.-	10 ml
01.462.0195	0.240		26,784.-	25 ml
Teflon				
02.462.0183	0.050		3,808.-	5 ml
02.462.0184	0.050		4,640.-	10 ml
02.462.0051	0.070		5,056.-	25 ml
22.041.0003	0.200		1,472.-	Mixing beakers of polystyrene, 28 ml, 100 pieces



Pellet press with accessories for the preparation of samples for the X-ray fluorescence analysis (XRF) see page 38

¹⁾ Further accessories, see page 15/16

www.retsch.com

Item No.	weight ^{appr.} (kg)	CZK	Item
Mixer Mill MM 301			
with quick release clamp			
(Please order grinding jars and balls separately, grinding balls see page 16)			

20.741.0001	20.000	127,360.-	MM 301 for 220-240 V, 50/60 Hz
20.741.0003	20.000	127,360.-	MM 301 for 110 V, 50/60 Hz

Grinding jars MM 301

screw top design

Chrome steel

01.462.0237	0.280	13,440.-	25 ml
-------------	-------	----------	-------

Stainless steel

01.462.0230	0.320	12,800.-	1.5 ml
01.462.0231	0.400	13,120.-	5 ml
01.462.0236	0.370	13,440.-	10 ml
02.462.0213	0.280	13,760.-	25 ml
01.462.0214	0.370	15,680.-	35 ml
01.462.0216	0.400	18,880.-	50 ml

Tungsten carbide

01.462.0235	0.490	41,280.-	10 ml
01.462.0217	0.610	44,480.-	25 ml

Agate

01.462.0232	0.330	35,840.-	5 ml
01.462.0233	0.300	38,720.-	10 ml

Zirconium oxide

01.462.0234	0.350	29,120.-	10 ml
01.462.0201	0.400	30,080.-	25 ml
01.462.0215	0.430	41,600.-	35 ml

Teflon

01.462.0238	0.120	9,920.-	25 ml
01.462.0244	0.150	11,200.-	35 ml

Accessories for grinding jars with screw top design

02.486.0001	0.300	2,016.-	Jar wrench for grinding jars 25 ml of tungsten carbide and all grinding jars 35 ml, 50 ml
22.085.0006	0.020	960.-	Sealing for grinding jar 25 ml of chrome steel and stainless steel, 10 pieces
22.085.0005	0.020	960.-	Sealing for grinding jar 35 ml of stainless steel, 10 pieces
22.085.0004	0.020	960.-	Sealing for grinding jar 35 ml of zirconium oxide, 10 pieces
22.085.0002	0.020	960.-	Sealing for grinding jar 50 ml of stainless steel, 10 pieces

Accessories for cold grinding MM 301

22.354.0001	1.000	9,440.-	Cryo kit for cooling the grinding jars with liquid nitrogen
-------------	-------	---------	---

Accessories for cell and tissue disruption MM 200 / MM 301

22.008.0005	0.850	5,760.-	Adapter for 5 reaction vials 1.5 and 2.0 ml, made of PTFE
22.008.0006	0.600	5,760.-	Adapter for 10 reaction vials 0.2 ml, made of PTFE
22.008.0008	0.600	6,880.-	Adapter rack for 10 reaction vials 1.5 and 2.0 ml, made of PTFE (only for MM 301)
22.749.0001	1.500	4,512.-	Safe-lock reaction vials 2.0 ml, 1000 pcs.
22.749.0002	1.400	3,264.-	Safe-lock reaction vials 1.5 ml, 1000 pcs.
22.749.0004	0.800	9,984.-	Safe-lock reaction vials 0.2 ml, 1000 pcs.

Grinding jars MM 301/MM 200 – guidelines for sample volume and ball charge

Grinding jar nominal volume	Sample amount	Max. feed size	Recommended ball charge						
			Ø 5 mm	Ø 7 mm	Ø 9/10 mm	Ø 12 mm	Ø 15 mm	Ø 20 mm	Ø 25 mm
1.5 ml	0.2 – 0.5 ml	1 mm	1 to 2 pcs.	-	-	-	-	-	-
5.0 ml	0.5 – 2.0 ml	2 mm	-	1 to 2 pcs.	-	-	-	-	-
10.0 ml	2.0 – 4.0 ml	4 mm	-	-	1 to 2 pcs.	1 to 2 pcs.	-	-	-
25.0 ml	4.0 – 10.0 ml	6 mm	-	-	-	-	1 pc.	-	-
35.0 ml	6.0 – 15.0 ml	6 mm	-	-	-	-	-	1 pc.	-
50.0 ml	8.0 – 20.0 ml	8 mm	-	-	-	-	-	-	1 pc.

In addition to the instrument settings, the filling level of the jar is also of crucial importance for the success of the grinding process in mixer mills. A jar filling should consist of about 1/3 sample and 1/3 ball charge. The remaining third is the free jar volume that is necessary for the free movement of the balls. The table provides guidelines.

MILLING

Jaw Crushers
Rotor Mills
Cutting Mills
Mortar Grinders
Disc Mills
Ball Mills



Mixer Mill MM 301

- for fibrous, hard and brittle materials
- feed size: up to 8 mm
- final fineness: down to approx. 0.005 mm



Grinding jars and balls MM 301



Accessories for cell and tissue disruption MM 200 / MM 301



MILLING

Jaw Crushers
Rotor Mills
Cutting Mills
Mortar Grinders
Disc Mills
Ball Mills



Grinding balls

BALL MILLS

Retsch

Item No.	weight <small>approx. (kg)</small>	CZK	Item
Grinding balls MM 200 / MM 301			
Chrome steel			
05.368.0029	<0.001	18.-	5 mm Ø
05.368.0030	0.002	21.-	7 mm Ø
05.368.0031	0.003	24.-	9 mm Ø
05.368.0059	0.005	36.-	10 mm Ø
05.368.0032	0.007	45.-	12 mm Ø
05.368.0108	0.015	55.-	15 mm Ø
Stainless steel			
05.368.0034	<0.001	21.-	5 mm Ø
05.368.0035	0.002	28.-	7 mm Ø
05.368.0036	0.003	45.-	9 mm Ø
05.368.0063	0.005	48.-	10 mm Ø
05.368.0037	0.007	55.-	12 mm Ø
05.368.0109	0.015	64.-	15 mm Ø
05.368.0062	0.040	202.-	20 mm Ø
05.368.0105	0.070	416.-	25 mm Ø
Tungsten carbide			
05.368.0038	0.001	266.-	5 mm Ø
05.368.0039	0.004	448.-	7 mm Ø
05.368.0040	0.006	640.-	9 mm Ø
05.368.0071	0.008	640.-	10 mm Ø
05.368.0041	0.013	992.-	12 mm Ø
05.368.0110	0.025	2,304.-	15 mm Ø
Agate			
05.368.0024	<0.001	100.-	5 mm Ø
05.368.0025	0.001	119.-	7 mm Ø
05.368.0026	0.002	151.-	9 mm Ø
05.368.0067	0.002	167.-	10 mm Ø
05.368.0027	0.003	234.-	12 mm Ø
Sintered aluminium oxide			
05.368.0019	<0.001	36.-	5 mm Ø
05.368.0020	0.001	52.-	7 mm Ø
05.368.0021	0.002	384.-	10 mm Ø
05.368.0022	0.004	640.-	12 mm Ø
Zirconium oxide			
05.368.0096	0.008	768.-	12 mm Ø
05.368.0113	0.010	1,440.-	15 mm Ø
05.368.0093	0.025	1,632.-	20 mm Ø
Teflon with steel core			
05.368.0045	0.002	2,208.-	10 mm Ø
05.368.0046	0.004	2,944.-	12 mm Ø
05.368.0114	0.007	3,200.-	15 mm Ø
05.368.0047	0.015	3,360.-	20 mm Ø
Polyamide for mixing beakers			
05.368.0042	<0.001	20.-	5 mm Ø
05.368.0043	<0.001	24.-	7 mm Ø
05.368.0044	<0.001	31.-	9 mm Ø
05.368.0003	0.001	68.-	12 mm Ø
Grinding balls for reaction vials and wet/ultra fine grinding			
22.455.0010	0.500	7,648.-	2 mm Ø, stainless steel, 500 g (approx. 110 ml)
22.455.0011	0.500	7,648.-	3 mm Ø, stainless steel, 500 g (approx. 120 ml)
22.455.0002	0.020	1,728.-	3 mm Ø, stainless steel, approx. 200 pieces (approx. 6 ml)
22.455.0001	0.050	2,080.-	4 mm Ø, stainless steel, approx. 200 pieces (approx. 14 ml)
22.455.0003	0.100	2,432.-	5 mm Ø, stainless steel, approx. 200 pieces (approx. 25 ml)
22.455.0006	0.050	2,624.-	3 mm Ø, tungsten carbide, approx. 200 pieces (approx. 6 ml)
22.455.0005	0.100	17,696.-	4 mm Ø, tungsten carbide, approx. 200 pieces (approx. 14 ml)
22.455.0004	0.200	19,776.-	5 mm Ø, tungsten carbide, approx. 200 pieces (approx. 25 ml)
05.368.0089	0.500	12,512.-	2 mm Ø, Zirconium oxide, 500 g (approx. 130 ml)
05.368.0090	0.500	12,512.-	3 mm Ø, Zirconium oxide, 500 g (approx. 140 ml)
22.455.0007	0.020	2,560.-	3 mm Ø, Zirconium oxide, approx. 200 pieces (approx. 6 ml)
22.455.0009	0.080	3,552.-	5 mm Ø, Zirconium oxide, approx. 200 pieces (approx. 25 ml)
22.222.0001	0.500	960.-	Glass beads 0.10 - 0.25 mm Ø, 500 g (approx. 320 ml)
22.222.0002	0.500	960.-	Glass beads 0.25 - 0.50 mm Ø, 500 g (approx. 320 ml)
22.222.0003	0.500	960.-	Glass beads 0.50 - 0.75 mm Ø, 500 g (approx. 320 ml)
22.222.0004	0.500	960.-	Glass beads 0.75 - 1.00 mm Ø, 500 g (approx. 320 ml)
22.222.0005	0.500	960.-	Glass beads 1.00 - 1.50 mm Ø, 500 g (approx. 320 ml)

www.retsch.com

Item No.	weight ^{appr.} (kg)	CZK	Item
Planetary Ball Mill PM 100 (Please order grinding jars and balls separately, see page 18/19)			
20.540.0001	80.000	138,880.-	PM 100 for 230 V, 50/60 Hz, with 1 grinding station, speed ratio 1 : -2
20.540.0002	80.000	138,880.-	PM 100 for 110 V, 50/60 Hz, with 1 grinding station, speed ratio 1 : -2

Planetary Ball Mill PM 200 (Please order grinding jars and balls separately, see page 18/19)			
20.640.0001	72.000	182,080.-	PM 200 for 230 V, 50/60 Hz, with 2 grinding stations, speed ratio 1 : -2
20.640.0002	72.000	182,080.-	PM 200 for 110 V, 50/60 Hz, with 2 grinding stations, speed ratio 1 : -2

Planetary Ball Mill PM 400 on wheels (Please order grinding jars and balls separately, see page 18/19)			
20.532.0001	280.000	325,440.-	PM 400 for 1 x 220 - 230 V, 50/60 Hz, with 4 grinding stations, speed ratio 1 : -2
20.532.0002	280.000	325,440.-	PM 400 for 1 x 240 V, 50/60 Hz, with 4 grinding stations, speed ratio 1 : -2
20.532.0005	270.000	284,800.-	PM 400/2 for 1 x 220-230 V, 50/60 Hz, with 2 grinding stations, speed ratio 1 : -2
20.532.0006	270.000	284,800.-	PM 400/2 for 1 x 240 V, 50/60 Hz, with 2 grinding stations, speed ratio 1 : -2
20.532.0007	300.000	361,920.-	PM 400 MA-type for 220-230 V, 50/60 Hz, special design for Mechanical Alloying, adjusted speed ratio 1 : -2.5
20.532.0008	300.000	361,920.-	PM 400 MA-type for 220-230 V, 50/60 Hz, special design for Mechanical Alloying, adjusted speed ratio 1 : -3

Accessories PM 100 / PM 200 / PM 400			
22.001.0004	0.250	4,896.-	Adapter for using grinding jars "comfort", 250-500 ml versions before 06.2003, for PM 100
03.025.0002	0.150	1,504.-	Adapter for stacking grinding jars "comfort", 50 ml, chrome steel, stainless steel, for PM 100 and PM 400
03.025.0003	0.150	1,760.-	Adapter for stacking grinding jars "comfort", 50 ml, tungsten carbide, agate, sintered aluminium oxide, zirconium oxide, for PM 100 and PM 400
22.221.0002	1.000	2,016.-	Add-on weight for PM 100
02.728.0048	0.400	2,016.-	Counter wrench



Grinding jars "comfort" – guidelines for sample volume and ball charge

"comfort" grinding jar nominal volume	Useful volume (sample and balls)	Max. feed size	Recommended ball charge			
			Ø 10 mm	Ø 20 mm	Ø 30 mm	Ø 40 mm
12 ml	up to 5 ml	<1 mm	5 pcs.	-	-	-
25 ml	up to 10 ml	<1 mm	8 pcs.	-	-	-
50 ml	5 - 20 ml	<3 mm	10 pcs.	3 pcs.	-	-
80 ml	10 - 50 ml	<4 mm	20 pcs.	5 pcs.	-	-
125 ml	15 - 70 ml	<4 mm	25 pcs.	6 pcs.	-	-
250 ml	25 - 150 ml	<6 mm	50 pcs.	12 pcs.	5 pcs.	-
500 ml	75 - 300 ml	<10 mm	100 pcs.	20 pcs.	8 pcs.	4 pcs.

In addition to the instrument settings, the filling level of the jar is also of crucial importance for the success of the grinding process in planetary ball mills. For grinding bulk materials a jar filling should consist of about 1/3 sample and 1/3 ball charge. The remaining third is the free jar volume that is necessary for the free movement of the balls. The table provides guidelines.

MILLING

- Jaw Crushers
- Rotor Mills
- Cutting Mills
- Mortar Grinders
- Disc Mills

Ball Mills



- Planetary Ball Mill PM 100**
- for soft, fibrous, hard and brittle materials
 - feed size: up to 10 mm
 - final fineness: down to approx. < 0.001 mm
 - with 1 grinding station for jars up to 500 ml



- Planetary Ball Mill PM 200**
- for soft, fibrous, hard and brittle materials
 - feed size: up to 4 mm
 - final fineness: down to approx. < 0.001 mm
 - with 2 grinding station for jars up to 125 ml



- Planetary Ball Mill PM 400**
- for soft, fibrous, hard and brittle materials
 - feed size: up to 10 mm
 - final fineness: down to approx. < 0.001 mm
 - with 4 grinding station for jars up to 500 ml

MILLING

Jaw Crushers
Rotor Mills
Cutting Mills
Mortar Grinders
Disc Mills

Ball Mills



Centrifugal Ball Mill S 100

- for fibrous, hard and brittle materials
- feed size: up to 10 mm
- final fineness: down to approx. 0.001 mm



PM 100, PM 200, PM 400, S 100
Grinding jars and balls

BALL MILLS

Retsch®

Item No.	weight	appr. (kg)	CZK	Item
Centrifugal Ball Mill S 100 (Please order grinding jars and balls separately, see page 18/19)				
20.189.1001	48.000		116,480.-	S 100 for 220-240 V, 50/60 Hz
20.189.1002	48.000		116,480.-	S 100 for 100-120 V, 50/60 Hz

Accessories S 100

02.112.0059	0.100		3,712.-	Sleeve for centering/reducing grinding jars "comfort", 12/25/50 ml
32.825.0001	1.100		5,728.-	Carry handles, one pair
01.267.0036	2.000		10,464.-	Spare jar holder for S 100 / S 1000

Grinding jars "standard" for S 100

02.462.0041	4.600		101,760.-	Tungsten carbide	250 ml
01.462.0054	3.000		85,120.-	Agate	500 ml
02.462.0094	3.000		51,200.-	Sintered aluminium oxide	500 ml
01.462.0189	4.500		86,080.-	Zirconium oxide	500 ml
02.462.0020	1.500		7,296.-	Hard porcelain (convex)	250 ml
05.111.0005	0.002		77.-	Rubber sealing for grinding jar "standard" tungsten carbide	250 ml
05.111.0140	0.002		212.-	Teflon sealing for grinding jar "standard" tungsten carbide	250 ml
05.111.0143	0.004		77.-	Rubber sealing for grinding jar "standard" zirconium oxide	500 ml
05.111.0144	0.006		212.-	Teflon sealing for grinding jar "standard" zirconium oxide	500 ml
09.241.0108	0.008		352.-	Rubber sealing for grinding jar "standard" hard porcelain	250 ml

Grinding jars "comfort" PM 100 / PM 200 / PM 400 / S 100

Chrome steel

01.462.0145	0.700		17,888.-	50 ml
01.462.0144	1.450		22,144.-	125 ml
1) 01.462.0224	3.200		25,408.-	250 ml
1) 01.462.0229	4.100		35,520.-	500 ml

Stainless steel

01.462.0239	0.360		9,664.-	12 ml
01.462.0240	0.390		10,656.-	25 ml
01.462.0149	0.700		19,520.-	50 ml
01.462.0148	1.450		25,600.-	125 ml
1) 01.462.0223	3.200		27,840.-	250 ml
1) 01.462.0228	4.100		40,960.-	500 ml

Tungsten carbide

01.462.0156	1.850		65,280.-	50 ml
01.462.0155	2.700		72,320.-	125 ml
1,2) 01.462.0222	6.150		101,760.-	250 ml

Agate

01.462.0139	0.700		24,096.-	50 ml
01.462.0197	1.200		24,928.-	80 ml
01.462.0136	1.500		25,920.-	125 ml
1) 01.462.0220	3.500		35,840.-	250 ml
1,2) 01.462.0225	4.800		85,120.-	500 ml

Sintered aluminium oxide

01.462.0153	0.850		25,760.-	50 ml
01.462.0152	1.800		29,856.-	125 ml
1) 01.462.0221	3.700		35,520.-	250 ml
1,2) 01.462.0226	5.500		51,200.-	500 ml

Zirconium oxide

01.462.0188	1.050		48,960.-	50 ml
01.462.0187	2.250		60,800.-	125 ml
1) 01.462.0219	4.600		73,280.-	250 ml
1,2) 01.462.0227	6.500		86,080.-	500 ml

1) Not suitable for PM 200

2) Not suitable for S 100

www.retsch.com

Item No.	weight (kg)	CZK	Item
1)			
Accessories for grinding jars "comfort" for grinding with inert atmosphere and Mechanical Alloying (MA)			
22.107.0005	0.800	13,408.-	Aeration cover for grinding jar "comfort" 250 ml, made of stainless steel
22.107.0006	1.600	39,360.-	Aeration cover for grinding jar "comfort" 250 ml, made of tungsten carbide
22.107.0007	1.600	16,864.-	Aeration cover for grinding jar "comfort" 500 ml, made of stainless steel
22.107.0010	1.600	39,360.-	Aeration cover for grinding jar "comfort" 500 ml, made of zirconium oxide
22.867.0002	0.600	13,408.-	Safety closure device for grinding jars "comfort" 50 ml
22.867.0003	0.800	13,408.-	Safety closure device for grinding jars "comfort" 125 ml
22.867.0004	1.000	13,408.-	Safety closure device for grinding jars "comfort" 250 ml
22.867.0005	1.000	24,128.-	Safety closure device for grinding jars "comfort" 500 ml

Accessories for grinding jars "comfort"			
05.114.0057	0.003	192.-	O-ring, for grinding jars "comfort", 50 ml, 1 piece
05.114.0056	0.003	192.-	O-ring, for grinding jars "comfort", 125 ml, 1 piece
05.114.0055	0.004	192.-	O-ring, for grinding jars "comfort", 250 ml made of chrome steel, stainless steel, 1 piece
22.085.0010	0.010	404.-	O-Ring, for grinding jars "comfort", 250 ml made of agate, sintered aluminium oxide, zirconium oxide, 1 set
05.114.0054	0.004	192.-	O-Ring, for grinding jars "comfort", 500 ml made of chrome steel, stainless steel, 1 piece
22.085.0011	0.010	544.-	O-Ring, for grinding jars "comfort", 500 ml made of agate, sintered aluminium oxide, zirconium oxide, 1 set

2) **Grinding balls PM 100 / PM 200 / PM 400 / S 100**
Chrome steel

05.368.0059	0.005	36.-	10 mm Ø
05.368.0033	0.040	100.-	20 mm Ø
05.368.0057	0.110	202.-	30 mm Ø
05.368.0056	0.260	416.-	40 mm Ø

Stainless steel

05.368.0063	0.005	48.-	10 mm Ø
05.368.0062	0.040	202.-	20 mm Ø
05.368.0061	0.110	500.-	30 mm Ø
05.368.0060	0.260	1,120.-	40 mm Ø
22.455.0010	0.500	7,648.-	2 mm Ø, 0.5 kg (approx. 110 ml)
22.455.0011	0.500	7,648.-	3 mm Ø, 0.5 kg (approx. 120 ml)

Tungsten carbide

05.368.0071	0.008	640.-	10 mm Ø
05.368.0070	0.070	2,560.-	20 mm Ø
05.368.0069	0.210	7,328.-	30 mm Ø
05.368.0068	0.500	14,528.-	40 mm Ø

Agate, polished

05.368.0067	0.002	167.-	10 mm Ø
05.368.0028	0.025	500.-	20 mm Ø
05.368.0065	0.035	1,280.-	30 mm Ø
05.368.0064	0.080	2,432.-	40 mm Ø

Sintered aluminium oxide

05.368.0021	0.006	384.-	10 mm Ø
05.368.0054	0.015	672.-	20 mm Ø
05.368.0053	0.050	1,184.-	30 mm Ø
05.368.0052	0.120	1,856.-	40 mm Ø

Zirconium oxide

05.368.0094	0.003	640.-	10 mm Ø
05.368.0093	0.025	1,632.-	20 mm Ø
05.368.0092	0.100	2,944.-	30 mm Ø
05.368.0091	0.175	6,336.-	40 mm Ø
05.368.0089	0.500	12,512.-	2 mm Ø, 0.5 kg (approx. 130 ml)
05.368.0090	0.500	12,512.-	3 mm Ø, 0.5 kg (approx. 140 ml)

3) Hard porcelain			
05.368.0051	0.002	36.-	10 mm Ø
05.368.0050	0.015	36.-	20 mm Ø
05.368.0049	0.040	71.-	30 mm Ø
05.368.0048	0.100	93.-	40 mm Ø

1) Further aeration covers upon request

2) Further grinding balls see page 16

3) For S 100 only



Grinding jar with safety closure device / Aeration cover

Grinding balls



■ SIEVING

Sieve Shakers

Evaluation Software
Test Sieves



Sieve Shaker AS 200 control

- measuring range 20 µm to 25 mm
- sieve stack up to 450 mm height, Ø 100 / 150 / 200 / 203 mm
- indication of sieve base acceleration and vibration height
- integrated interface for controlling all sieving parameters via the EasySieve® software
- memory for 9 parameter combinations



Sieve Shaker AS 300 control

- measuring range 36 µm to 40 mm
- sieve stack up to 450 mm height, Ø 100 mm / 150 mm / 200 mm / 203 mm / 305 mm / 315 mm
- indication of sieve base acceleration and vibration height
- memory for 9 parameter combinations
- integrated interface for controlling all sieving parameters via the EasySieve® software

SIEVE SHAKERS



Item No.	weight	app. (kg)	CZK	Item
Sieve Shaker AS 200 (for test sieves up to 203 mm / 8" Ø) (Please order clamping device, test sieves and collecting pan separately)				
30.016.0001	32.000		42,560.-	AS 200 basic for 230 V, 50 Hz
30.016.0004	32.000		42,560.-	AS 200 basic for 110 V, 60 Hz
30.015.0001	32.000		49,600.-	AS 200 digit for 230 V, 50 Hz
30.015.0004	32.000		49,600.-	AS 200 digit for 110 V, 60 Hz
1) 30.018.0001	32.000		60,160.-	AS 200 control for 100-240 V, 50/60 Hz incl. inspection certificate acc. to EN 10204 3.1B

Clamping devices AS 200

32.662.0003	2.100		3,840.-	Clamping device „economy” for test sieves 100/150/200/203 mm Ø
32.662.0002	2.100		7,680.-	Clamping device „standard” for test sieves 200/203 mm Ø
32.662.0001	2.700		15,360.-	Clamping device „comfort” for test sieves 200/203 mm Ø
32.662.0005	2.000		11,520.-	Universal clamping device „standard” for test sieves 100/150/200/203 mm Ø
32.662.0004	3.000		19,200.-	Universal clamping device „comfort” for test sieves 100/150/200/203 mm Ø
32.662.0007	2.700		15,360.-	Universal wet sieving clamping device „standard” for test sieves 100/150/200/203 mm Ø
32.662.0006	3.200		23,040.-	Universal wet sieving clamping device „comfort” for test sieves 100/150/200/203 mm Ø

Sieve stacks and accessories AS 200

60.131.000999	3.050		21,120.-	Sieve stack, 200 mm Ø, 50 mm height, acc. to ISO 3310/1 (45 µm, 63 µm, 125 µm, 250 µm, 500 µm, 1 mm, 2 mm, 4 mm, collecting pan)
60.150.000999	3.050		21,120.-	Sieve stack, 203 mm (8") Ø, 50 mm (2") height, acc. to ASTM E 11 (45 µm / 325 mesh, 63 µm / 230 mesh, 125 µm / 120 mesh, 250 µm / 60 mesh, 500 µm / 35 mesh, 1 mm / 18 mesh, 2 mm / 10 mesh, 4 mm / 5 mesh, collecting pan)
02.938.0001	2.100		3,840.-	Add-on weight 2100 g (two discs) for low loads for AS 200 basic and AS 200 digit
99.200.0001			7,680.-	IQ/OQ Documentation for AS 200 control

Sieve Shaker AS 300 control

(for test sieves up to 305 mm / 12" Ø)
(Please order clamping device, test sieves and collecting pan separately)

2) 30.021.0001	38.000		79,360.-	AS 300 control for 100 - 240 V, 50/60 Hz incl. inspection certificate acc. to EN 10204 3.1B
----------------	--------	--	-----------------	---

Clamping devices AS 300

32.662.0008	2.500		9,600.-	Clamping device "standard" for test sieves 305 mm Ø
32.662.0009	3.600		18,560.-	Clamping device "comfort" for test sieves 305 mm Ø
32.662.0012	4.500		19,200.-	Wet sieving clamping device "standard" for test sieves 305 mm Ø
32.662.0014	5.400		28,160.-	Wet sieving clamping device "comfort" for test sieves 305 mm Ø

Sieve stacks and accessories AS 300

60.158.000999	3.500		33,280.-	Sieve stack, 305 mm Ø, 40 mm height, acc. to ISO 3310/1 (630 µm, 1.25 mm, 2.50 mm, 5 mm, 10 mm, 20 mm, 31.5 mm, collecting pan)
60.159.000999	3.500		33,280.-	Sieve stack, 305 mm (12") Ø, 40 mm height, acc. to ASTM E 11 (600 µm / 30 mesh, 1.18 mm / 16 mesh, 2.36 mm / 8 mesh, 4.75 mm / 4 mesh, 9.5 mm / 3/8", 19 mm / 3/4", 31.5 mm / 1 1/4", collecting pan)
99.200.0002			7,680.-	IQ/OQ Documentation for AS 300 control



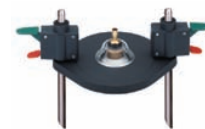
Sieve clamping device "comfort"



Sieve clamping device "standard"



Sieve clamping device "economy"



Universal wet sieve clamping device "comfort"



Universal sieve clamping device "standard"

- 1) The recalibration feature on the AS 200 control makes it suitable as a test instrument for the quality control according to ISO 9000 (see page 23).
2) The recalibration feature on the AS 300 control makes it suitable as a test instrument for the quality control according to ISO 9000 (see page 23).
3) All clamping devices of AS 200 are also suitable for AS 300.

	Item No.	weight ^{appr.} (kg)	CZK	Item
Sieve Shaker AS 400 control (for test sieves up to 400 mm Ø) (Please order clamping device, test sieves and collecting pan additionally)				
1)	30.022.0001	72.000	104,960.-	AS 400 control for 100–240 V, 50/60 Hz incl. inspection certificate acc. to EN 10204 3.1B
Clamping devices AS 400				
	32.662.0010	3.000	10,560.-	Clamping device „standard“ for test sieves 400 mm Ø
	32.662.0011	3.000	19,520.-	Clamping device „comfort“ for test sieves 400 mm Ø
Sieve stacks AS 400				
	60.166.000999	10.000	45,440.-	Sieve stack, 400 mm Ø, 65 mm height, acc. to ISO 3310/1 (500 µm, 1 mm, 2 mm, 5 mm, 10 mm, 20 mm, collecting pan)
	60.167.000999	10.000	45,440.-	Sieve stack, 400 mm Ø, 65 mm height, acc. to ASTM E 11 (500 µm / 35 mesh, 1 mm / 18 mesh, 2 mm / 10 mesh, 4.75 mm / 4 mesh, 9.5 mm / 3/8", 19 mm / 3/4", collecting pan)
	03.802.0006	4.000	3,584.-	Transportation handles AS 400



Sieve Shaker AS 400 control

- measuring range 45 µm to 63 mm
- sieve stack up to 450 mm height, Ø 100 / 150 / 200 / 203 / 305 / 400 mm
- rotation speed is electronically controlled and can be continuously adjusted
- memory for 9 parameter combinations
- integrated interface for controlling all sieving parameters via the EasySieve® software

Accessories for clamping devices AS 200 / AS 300 / AS 400				
	03.660.0006	0.800	1,888.-	Clamping cover without window for test sieves 100/150/200/203 mm Ø
	32.481.0022	1.100	4,928.-	Clamping cover with large window of Perspex for test sieves 200/203 mm Ø
	32.481.0014	1.350	7,872.-	Universal clamping cover with small window for test sieves 100/150/200/203 mm Ø
	32.481.0015	0.400	12,128.-	Universal wet sieving cover with small window for test sieves 100/150/200/203 mm Ø
	02.660.0011	0.500	5,920.-	Clamping cover with large window of Perspex for test sieves 305 mm Ø
	02.660.0017	1.900	15,360.-	Wet sieving cover for test sieves 305 mm Ø
	02.660.0012	0.500	6,880.-	Clamping cover with large window of Perspex for test sieves 400 mm Ø
	32.142.0001	0.800	1,024.-	Clamping nuts (2 pieces), for clamping device "economy" and "standard"
	32.248.0002	1.200	1,824.-	Threaded rods (2 pieces), for clamping device "economy" and "standard"
	32.248.0001	0.800	928.-	Short threaded rods (2 pieces), for clamping of max. 5 test sieves, for clamping device "economy" and "standard"
	32.737.0001	1.800	10,816.-	Quick-clamping elements (2 pieces), for clamping device "comfort" AS 200/300/400
	32.742.0009	0.250	3,520.-	Rods, smooth (2 pieces), for clamping device "comfort" AS 200
	32.742.0010	2.600	3,520.-	Rods, smooth (2 pieces), for clamping device "comfort" AS 300/400

EasySieve® Software				
	32.645.0019	0.500	15,936.-	EasySieve standard, for Windows® 95/98/ME/NT/2000/XP, German, Single-user-licence
	32.645.0020	0.500	15,936.-	EasySieve standard, for Windows® 95/98/ME/NT/2000/XP, English, Single-user-licence
	32.645.0021	0.500	23,936.-	EasySieve comfort, for Windows® 95/98/ME/NT/2000/XP, German, Single-user-licence (extended version including data transfer to LIMS systems and presentation of trend analysis)
	32.645.0026	0.500	23,936.-	EasySieve comfort, for Windows® 95/98/ME/NT/2000/XP, English, Single-user-licence (extended version including data transfer to LIMS systems and presentation of trend analysis)

Accessories				
	03.105.0306	0.100	7,040.-	Data interface connector for Mettler-Toledo Balance PR
	03.105.0304	0.100	1,920.-	Data interface connector (RS 232 - 9 pin f) for Mettler-Toledo Balances PG-S and SG
	03.105.0305	0.120	960.-	Data interface connector for Sartorius Balances BP and L



Software EasySieve®

- automatic registration, evaluation, and administration of measurement data
- logical design, self-explanatory
- comprehensive evaluation possibilities
- measurement protocol in accordance with standards



1) The recalibration feature on the AS 400 control makes it suitable as a test instrument for the quality control according to ISO 9000 (see page 23).
2) All clamping devices of AS 200 and AS 300 are also suitable for AS 400.

■ SIEVING

Sieve Shakers
Evaluation Software
Test Sieves

TEST SIEVES

Retsch[®]

Item No.	weight <small>approx. (kg)</small>	CZK	Item
Accessories for test sieves			
Test Sieves 200 mm Ø, height 50 mm			
69.720.0050	0.500	1,408.-	Collecting pan, stainless steel, 200 mm Ø, height 50 mm
69.220.0050	0.470	2,176.-	Intermediate pan, stainless steel, 200 mm Ø, height 50 mm
69.121.0050	0.350	1,376.-	Intermediate ring, stainless steel, 200 mm Ø, height 50 mm
69.521.0050	0.500	1,408.-	Sieve cover, stainless steel, 200 mm Ø
09.107.0396	1.000	4,448.-	Cover for air jet sieving, Perspex
69.420.0050	0.700	5,376.-	Collecting pan with outlet, stainless steel, 200 mm Ø, height 50 mm
69.221.0025	0.120	2,080.-	Venting ring for wet sieving, stainless steel, 200 mm Ø, height 25 mm
05.114.0077	0.009	48.-	Spare seal ring for Test Sieves, 200 mm Ø, height 50 mm

Test Sieves 200 mm Ø, height 25 mm			
69.720.0025	0.250	1,408.-	Collecting pan, stainless steel, 200 mm Ø, height 25 mm
69.220.0025	0.400	2,176.-	Intermediate pan, stainless steel, 200 mm Ø, height 25 mm
69.121.0025	0.300	1,376.-	Intermediate ring, stainless steel, 200 mm Ø, height 25 mm
69.521.0050	0.500	1,408.-	Sieve cover, stainless steel, 200 mm Ø
69.420.0050	0.700	5,376.-	Collecting pan with outlet, stainless steel, 200 mm Ø, height 50 mm
69.221.0025	0.120	2,080.-	Venting ring for wet sieving, stainless steel, 200 mm Ø, height 25 mm
05.114.0078	0.009	48.-	Spare seal ring for Test Sieves, 200 mm Ø, height 25 mm

Test Sieves 203 mm Ø / 8" Ø			
69.720.3050	0.500	1,408.-	Collecting pan, stainless steel, 8" Ø, height 2"
69.220.3050	0.480	2,176.-	Intermediate pan, stainless steel, 8" Ø, height 2"
69.121.3050	0.370	1,376.-	Intermediate ring, stainless steel, 8" Ø, height 2"
69.521.3050	0.550	1,408.-	Sieve cover, stainless steel, 8" Ø
09.107.0396	1.000	4,448.-	Cover for air jet sieving, Perspex
69.420.3050	0.700	5,376.-	Collecting pan with outlet, stainless steel, 8" Ø, height 2"
69.221.3050	0.120	2,080.-	Venting ring for wet sieving, stainless steel, 8" Ø, height 50 mm
05.114.0077	0.009	48.-	Spare seal ring for Test Sieves, 8" mm Ø, height 2"

Test Sieves 305 mm Ø			
60.010.000305	1.200	2,144.-	Collecting pan, stainless steel, 305 mm Ø, height 40 mm
60.935.000305	0.800	2,080.-	Intermediate ring, stainless steel, 305 mm Ø, height 40 mm
60.107.000305	0.850	2,144.-	Sieve cover, stainless steel, 305 mm Ø
69.430.0050	0.700	11,360.-	Collecting pan with outlet, stainless steel, 305 mm Ø, height 40 mm
69.321.0050	1.000	5,440.-	Venting ring for wet sieving, stainless steel, 305 mm Ø, height 40 mm
05.114.0047	0.015	116.-	Spare seal ring for Test Sieves, 305 mm Ø

Test Sieves 400 mm Ø			
60.010.000400	1.700	4,224.-	Collecting pan, stainless steel, 400 mm Ø, height 65 mm
60.220.000400	1.500	5,920.-	Intermediate pan, stainless steel, 400 mm Ø, height 65 mm
60.935.000400	1.100	3,552.-	Intermediate ring, stainless steel, 400 mm Ø, height 65 mm
60.107.000400	1.400	3,232.-	Sieve cover, stainless steel, 400 mm Ø
05.114.0048	0.020	125.-	Spare seal ring for Test Sieves, 400 mm Ø

Test Sieves 100 mm Ø			
60.010.000100	0.100	1,184.-	Collecting pan, stainless steel, 100 mm Ø, height 40 mm
60.935.000100	0.100	1,024.-	Intermediate ring, stainless steel, 100 mm Ø, height 40 mm
60.107.000100	0.080	1,184.-	Sieve cover, stainless steel, 100 mm Ø
60.010.100100	0.350	3,360.-	Collecting pan with outlet, stainless steel, 100 mm Ø, height 40 mm
05.114.0045	0.002	39.-	Spare seal ring for Test Sieves, 100 mm Ø

Test Sieves 150 mm Ø			
60.010.000150	0.260	1,312.-	Collecting pan, stainless steel, 150 mm Ø, height 50 mm
60.107.000150	0.200	1,312.-	Sieve cover, stainless steel, 150 mm Ø
60.010.100150	0.500	4,608.-	Collecting pan with outlet, stainless steel, 150 mm Ø, height 50 mm
05.114.0046	0.007	45.-	Spare seal ring for Test Sieves, 150 mm Ø

Sieving Aids			
32.365.0001	0.120	1,536.-	Chain ring for test sieves 200 mm and 203 mm Ø to support horizontal sieving
32.050.0001	0.075	1,344.-	Brushes of Nylon, 3 pieces
32.902.0001	0.200	672.-	Cubes of Vulkollan, 12 x 12 x 12 mm, 10 pieces
32.902.0002	0.300	992.-	Cubes of Vulkollan, 20 x 20 x 20 mm, 10 pieces
32.354.0001	0.050	672.-	Balls of rubber, 20 mm Ø, 5 pieces
32.354.0002	0.020	1,664.-	Balls of agate, 10 mm Ø, 10 pieces
32.354.0004	0.150	189.-	Balls of steatite, 6 mm Ø, 150 g
32.354.0005	0.200	320.-	Balls of hard porcelain, 2 mm Ø, 200 g

Test Sieve Rack			
32.012.0001	3.500	5,920.-	Test Sieve Rack for 10 Test Sieves Ø 200 mm/8", height 50 mm/25 mm



Accessories for sieves

- (A) Collecting pan
- (B) Intermediate bottom
- (C) Intermediate ring
- (D) Sieve cover
- (E) Cover for air jet sieving
- (F) Collecting pan with outlet
- (G) Venting ring for wet sieving



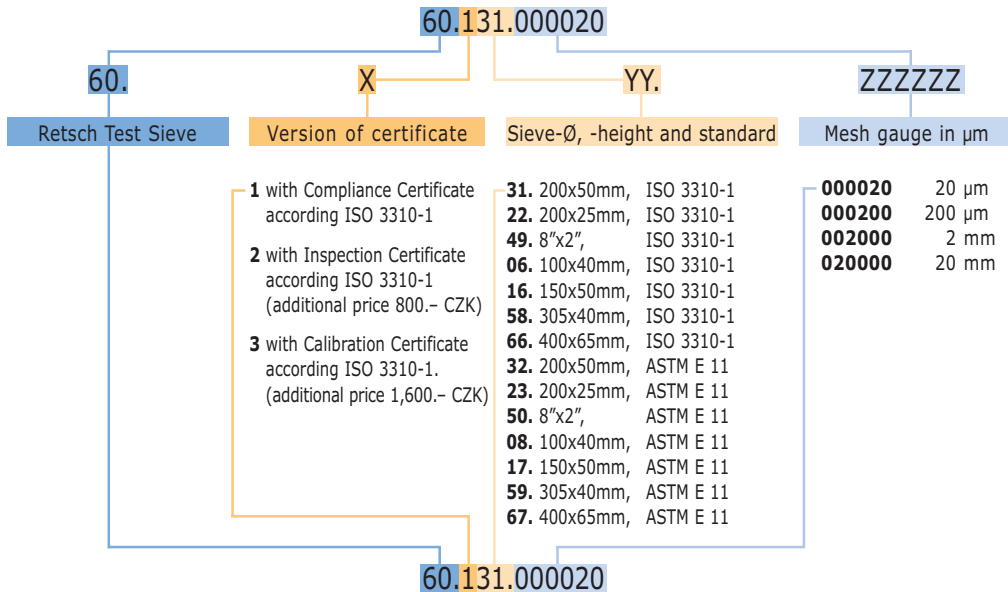
Sieving aids



Sieve rack

www.retsch.com

The following data will help you to select the right item number that meets your needs for Retsch Test Sieves. The Retsch **item numbers** for Test Sieves have the following structure:



Proven Quality

Each Retsch Test Sieve is supplied with a **COMPLIANCE CERTIFICATE**.

Retsch Test Sieves are available with an **INSPECTION CERTIFICATE** according to ISO 3310-1 (e.i. EN 10204 3.1.B). This inspection certificate shows the exact measuring data of the mesh. The surcharge for this certificate is 800.- CZK.

For sieves used as inspection equipment in ISO 9000 certified systems we offer a **CALIBRATION CERTIFICATE** according to ISO 3310-1 (e.i. EN 10204 3.1.B) with a higher statistical reliability. The surcharge for the calibration certificate is 1,600.- CZK.

Mesh gauge according to standard:
1000 µm
 =
 18 Mesh ASTM
 18 Mesh Tyler
 1000 µm ISO 3310-1

CALIBRATION

Recalibration of test sieves according ISO 3310-1 and ASTM E 11

The calibration takes place according to the requirements of ISO 9000 regarding inspection and test equipment. The traceability to national standards is ensured by using PTB resp. DKD calibrated measuring equipment. The calibration certificate has a higher statistical reliability than the inspection certificate.

Item No.	weight ^{appr.} (kg)	CZK	Item
1. Calibration with inspection certificate according to ISO 3310 resp. EN 10204 3.1. B.			
97.015.0002		on request	Sieve diameter up to 203 mm
97.016.0002		on request	Sieve diameter 305 mm
97.017.0002		on request	Sieve diameter 400 mm
2. Calibration with calibration certificate according to ISO 3310 resp. EN 10204 3.1. B. (not for ASTM E 11)			
97.012.0002		on request	Sieve diameter up to 203 mm
97.013.0002		on request	Sieve diameter 305 mm
97.014.0002		on request	Sieve diameter 400 mm

Recalibration of sieve shakers

Sieve shakers from the „control“ series can be calibrated at Retsch/Germany and at selected subsidiaries/agents.

Calibration of sieve shakers includes the following services:

1. Technical inspection of equipment condition
2. Calibration and checking of overall unit function
3. New test sticker
4. Inspection certificate

Item No.	weight ^{appr.} (kg)	CZK	Item
Calibration of sieve shakers			
97.001.0001		on request	Calibration of sieve shakers at Retsch/Germany

Sieve shakers or sieves returned to Retsch must be accompanied by a statement as to the material handled by the devices, possibly a material safety data sheet and by a confirmation that the items have been decontaminated.

Details for calibration:

Retsch verifies sieves according to ISO 3310-1 and ASTM E 11 standard.

The conformity to the mentioned standards is only fulfilled if

- the visual inspection of body and gauze shows no damages
- optical gauze inspection fulfils the requirements of the mentioned standards

and the sieves are marked with the following details:

- Nominal aperture size
- Reference to applicable standard
- Material of steel wire gauze and frame
- Name of manufacturer
- Serial number

Sieves have to be cleaned and decontaminated. All prices ex works excluding packaging and insurance.

Test sieves cannot be returned!



■ SIEVING

Sieve Shakers
Evaluation Software
Test Sieves



Test Sieves

- according to ISO 3310-1
- optical inspection of the aperture size
- with laser-engraved serial number
- inspection certificate or calibration certificate available

Proven Quality

Each Retsch Test Sieve is supplied with a **COMPLIANCE CERTIFICATE**.

Retsch Test Sieves are available with an **INSPECTION CERTIFICATE** according to ISO 3310-1 (e.i. EN 10204 3.1.B). This inspection certificate shows the exact measuring data of the mesh. The surcharge for this certificate is 800.- CZK.

For sieves used as inspection equipment in ISO 9000 certified systems we offer a **CALIBRATION CERTIFICATE** according to ISO 3310-1 (e.i. EN 10204 3.1.B) with a higher statistical reliability. The surcharge for the calibration certificate is 1,600.- CZK.

Please refer to page 23 how to configure the item number if you wish to order an inspection certificate or a calibration certificate for your test sieve.

TEST SIEVES ACC. TO ISO 3310/1

Retsch[®]

Item No.	weight ^{app:} (kg)	CZK	Mesh gauge
200 mm Ø x 50 mm height			
of stainless steel with wire gauze			
60.131.000020	0.350	16,448.-	20 µm *
60.131.000025	0.350	8,576.-	25 µm *
60.131.000032	0.350	4,960.-	32 µm *
60.131.000036	0.350	4,960.-	36 µm
60.131.000038	0.350	4,960.-	38 µm
60.131.000040	0.350	3,456.-	40 µm *
60.131.000045	0.350	3,456.-	45 µm
60.131.000050	0.350	2,944.-	50 µm *
60.131.000053	0.350	2,944.-	53 µm
60.131.000056	0.350	2,656.-	56 µm
60.131.000063	0.350	2,272.-	63 µm *
60.131.000071	0.350	2,272.-	71 µm
60.131.000075	0.350	2,272.-	75 µm
60.131.000080	0.350	2,272.-	80 µm *
60.131.000090	0.350	2,272.-	90 µm
60.131.000100	0.350	2,272.-	100 µm *
60.131.000106	0.350	2,272.-	106 µm
60.131.000112	0.350	2,272.-	112 µm
60.131.000125	0.350	2,272.-	125 µm *
60.131.000140	0.350	2,272.-	140 µm
60.131.000150	0.350	2,272.-	150 µm
60.131.000160	0.350	2,272.-	160 µm *
60.131.000180	0.350	2,272.-	180 µm
60.131.000200	0.350	2,272.-	200 µm *
60.131.000212	0.350	2,272.-	212 µm
60.131.000224	0.350	2,272.-	224 µm
60.131.000250	0.350	2,272.-	250 µm *
60.131.000280	0.350	2,272.-	280 µm
60.131.000300	0.350	2,272.-	300 µm
60.131.000315	0.350	2,272.-	315 µm *
60.131.000355	0.350	2,272.-	355 µm
60.131.000400	0.350	2,272.-	400 µm *
60.131.000425	0.350	2,272.-	425 µm
60.131.000450	0.350	2,272.-	450 µm
60.131.000500	0.350	2,272.-	500 µm *
60.131.000560	0.350	2,336.-	560 µm
60.131.000600	0.350	2,336.-	600 µm
60.131.000630	0.350	2,336.-	630 µm *
60.131.000710	0.350	2,336.-	710 µm
60.131.000800	0.350	2,336.-	800 µm *
60.131.000850	0.350	2,336.-	850 µm
60.131.000900	0.350	2,336.-	900 µm

Item No.	weight ^{app:} (kg)	CZK	Mesh gauge
200 mm Ø x 50 mm height			
of stainless steel with wire gauze			
60.131.001000	0.350	2,464.-	1.00 mm
60.131.001120	0.350	2,464.-	1.12 mm
60.131.001180	0.350	2,464.-	1.18 mm
60.131.001250	0.350	2,464.-	1.25 mm *
60.131.001400	0.350	2,464.-	1.40 mm
60.131.001600	0.350	2,464.-	1.60 mm *
60.131.001700	0.350	2,464.-	1.70 mm
60.131.001800	0.350	2,464.-	1.80 mm
60.131.002000	0.350	2,464.-	2.00 mm *
60.131.002240	0.350	2,464.-	2.24 mm
60.131.002360	0.350	2,464.-	2.36 mm
60.131.002500	0.350	2,464.-	2.50 mm *
60.131.002800	0.350	2,912.-	2.80 mm
60.131.003150	0.350	2,912.-	3.15 mm *
60.131.003350	0.350	2,912.-	3.35 mm
60.131.003550	0.350	2,912.-	3.55 mm
60.131.004000	0.350	2,912.-	4.00 mm *
60.131.004500	0.350	2,912.-	4.50 mm
60.131.004750	0.350	2,912.-	4.75 mm
60.131.005000	0.350	2,912.-	5.00 mm *
60.131.005600	0.350	2,912.-	5.60 mm
60.131.006300	0.350	2,912.-	6.30 mm *
60.131.006700	0.350	2,912.-	6.70 mm
60.131.007100	0.350	2,912.-	7.10 mm
60.131.008000	0.350	2,912.-	8.00 mm *
60.131.009000	0.350	2,912.-	9.00 mm
60.131.009500	0.350	2,912.-	9.50 mm
60.131.010000	0.350	3,296.-	10.00 mm *
60.131.011200	0.350	3,296.-	11.20 mm
60.131.012500	0.350	3,296.-	12.50 mm *
60.131.013200	0.350	3,296.-	13.20 mm
60.131.014000	0.350	3,296.-	14.00 mm
60.131.016000	0.350	3,296.-	16.00 mm *
60.131.018000	0.350	3,296.-	18.00 mm
60.131.019000	0.350	3,296.-	19.00 mm
60.131.020000	0.350	3,296.-	20.00 mm *
60.131.022400	0.350	3,296.-	22.40 mm
60.131.025000	0.350	3,296.-	25.00 mm *
60.131.026500	0.350	3,296.-	26.50 mm
60.131.028000	0.350	3,296.-	28.00 mm
60.131.031500	0.350	3,392.-	31.50 mm *
60.131.035500	0.350	3,392.-	35.50 mm
60.131.037500	0.350	3,392.-	37.50 mm
60.131.040000	0.350	3,392.-	40.00 mm *
60.131.045000	0.350	3,392.-	45.00 mm
60.131.050000	0.350	3,392.-	50.00 mm *
60.131.053000	0.350	3,392.-	53.00 mm
60.131.056000	0.350	3,392.-	56.00 mm
60.131.063000	0.350	3,392.-	63.00 mm *
60.131.071000	0.350	3,392.-	71.00 mm
60.131.075000	0.350	3,392.-	75.00 mm
60.131.080000	0.350	3,392.-	80.00 mm *
60.131.090000	0.350	3,392.-	90.00 mm
60.131.100000	0.350	3,392.-	100.00 mm *
60.131.106000	0.350	3,392.-	106.00 mm
60.131.112000	0.350	3,392.-	112.00 mm
60.131.125000	0.350	3,392.-	125.00 mm *

* Main Series 'R 10 according to DIN 323

Test sieves cannot be returned!

www.retsch.com

Retsch® TEST SIEVES ACC. TO ISO 3310/1

Item No.	weight <small>appr. (kg)</small>	CZK	Mesh gauge
200 mm Ø x 25 mm height			
of stainless steel with wire gauze			
60.122.000020	0.200	16,448.-	20 µm *
60.122.000025	0.200	8,576.-	25 µm *
60.122.000032	0.200	4,960.-	32 µm *
60.122.000036	0.200	4,960.-	36 µm
60.122.000038	0.200	4,960.-	38 µm
60.122.000040	0.200	3,456.-	40 µm *
60.122.000045	0.200	3,456.-	45 µm
60.122.000050	0.200	2,944.-	50 µm *
60.122.000053	0.200	2,944.-	53 µm
60.122.000056	0.200	2,656.-	56 µm
60.122.000063	0.200	2,272.-	63 µm *
60.122.000071	0.200	2,272.-	71 µm
60.122.000075	0.200	2,272.-	75 µm
60.122.000080	0.200	2,272.-	80 µm *
60.122.000090	0.200	2,272.-	90 µm
60.122.000100	0.200	2,272.-	100 µm *
60.122.000106	0.200	2,272.-	106 µm
60.122.000112	0.200	2,272.-	112 µm
60.122.000125	0.200	2,272.-	125 µm *
60.122.000140	0.200	2,272.-	140 µm
60.122.000150	0.200	2,272.-	150 µm
60.122.000160	0.200	2,272.-	160 µm *
60.122.000180	0.200	2,272.-	180 µm
60.122.000200	0.200	2,272.-	200 µm *
60.122.000212	0.200	2,272.-	212 µm
60.122.000224	0.200	2,272.-	224 µm
60.122.000250	0.200	2,272.-	250 µm *
60.122.000280	0.200	2,272.-	280 µm
60.122.000300	0.200	2,272.-	300 µm
60.122.000315	0.200	2,272.-	315 µm *
60.122.000355	0.200	2,272.-	355 µm
60.122.000400	0.200	2,272.-	400 µm *
60.122.000425	0.200	2,272.-	425 µm
60.122.000450	0.200	2,272.-	450 µm
60.122.000500	0.200	2,272.-	500 µm *
60.122.000560	0.200	2,336.-	560 µm
60.122.000600	0.200	2,336.-	600 µm
60.122.000630	0.200	2,336.-	630 µm *
60.122.000710	0.200	2,336.-	710 µm
60.122.000800	0.200	2,336.-	800 µm *
60.122.000850	0.200	2,336.-	850 µm
60.122.000900	0.200	2,336.-	900 µm

Item No.	weight <small>appr. (kg)</small>	CZK	Mesh gauge
200 mm Ø x 25 mm height			
of stainless steel with wire gauze			
60.122.001000	0.200	2,464.-	1.00 mm *
60.122.001120	0.200	2,464.-	1.12 mm
60.122.001180	0.200	2,464.-	1.18 mm
60.122.001250	0.200	2,464.-	1.25 mm *
60.122.001400	0.200	2,464.-	1.40 mm
60.122.001600	0.200	2,464.-	1.60 mm *
60.122.001700	0.200	2,464.-	1.70 mm
60.122.001800	0.200	2,464.-	1.80 mm
60.122.002000	0.200	2,464.-	2.00 mm *
60.122.002240	0.200	2,464.-	2.24 mm
60.122.002360	0.200	2,464.-	2.36 mm
60.122.002500	0.200	2,464.-	2.50 mm *
60.122.002800	0.200	2,912.-	2.80 mm
60.122.003150	0.200	2,912.-	3.15 mm *
60.122.003350	0.200	2,912.-	3.35 mm
60.122.003550	0.200	2,912.-	3.55 mm
60.122.004000	0.200	2,912.-	4.00 mm *
60.122.004500	0.200	2,912.-	4.50 mm
60.122.004750	0.200	2,912.-	4.75 mm
60.122.005000	0.200	2,912.-	5.00 mm *
60.122.005600	0.200	2,912.-	5.60 mm
60.122.006300	0.200	2,912.-	6.30 mm *
60.122.006700	0.200	2,912.-	6.70 mm
60.122.007100	0.200	2,912.-	7.10 mm
60.122.008000	0.200	2,912.-	8.00 mm *
60.122.009000	0.200	2,912.-	9.00 mm
60.122.009500	0.200	2,912.-	9.50 mm
60.122.010000	0.200	3,296.-	10.00 mm *
60.122.011200	0.200	3,296.-	11.20 mm
60.122.012500	0.200	3,296.-	12.50 mm *
60.122.013200	0.200	3,296.-	13.20 mm
60.122.014000	0.200	3,296.-	14.00 mm
60.122.016000	0.200	3,296.-	16.00 mm *
60.122.018000	0.200	3,296.-	18.00 mm
60.122.019000	0.200	3,296.-	19.00 mm
60.122.020000	0.200	3,296.-	20.00 mm *
60.122.022400	0.200	3,296.-	22.40 mm
60.122.025000	0.200	3,296.-	25.00 mm *
60.122.026500	0.200	3,296.-	26.50 mm
60.122.028000	0.200	3,296.-	28.00 mm
60.122.031500	0.200	3,392.-	31.50 mm *
60.122.035500	0.200	3,392.-	35.50 mm
60.122.037500	0.200	3,392.-	37.50 mm
60.122.040000	0.200	3,392.-	40.00 mm *
60.122.045000	0.200	3,392.-	45.00 mm
60.122.050000	0.200	3,392.-	50.00 mm *
60.122.053000	0.200	3,392.-	53.00 mm
60.122.056000	0.200	3,392.-	56.00 mm
60.122.063000	0.200	3,392.-	63.00 mm *
60.122.071000	0.200	3,392.-	71.00 mm
60.122.075000	0.200	3,392.-	75.00 mm
60.122.080000	0.200	3,392.-	80.00 mm *
60.122.090000	0.200	3,392.-	90.00 mm
60.122.100000	0.200	3,392.-	100.00 mm *
60.122.106000	0.200	3,392.-	106.00 mm
60.122.112000	0.200	3,392.-	112.00 mm
60.122.125000	0.200	3,392.-	125.00 mm *

■ SIEVING

Sieve Shakers
Evaluation Software
Test Sieves



Test Sieves

- according to ISO 3310-1
- optical inspection of the aperture size
- with laser-engraved serial number
- inspection certificate or calibration certificate available

Proven Quality

Each Retsch Test Sieve is supplied with a **COMPLIANCE CERTIFICATE**.

Retsch Test Sieves are available with an **INSPECTION CERTIFICATE** according to ISO 3310-1 (e.i. EN 10204 3.1.B). This inspection certificate shows the exact measuring data of the mesh. The surcharge for this certificate is 800.- CZK.

For sieves used as inspection equipment in ISO 9000 certified systems we offer a **CALIBRATION CERTIFICATE** according to ISO 3310-1 (e.i. EN 10204 3.1.B) with a higher statistical reliability. The surcharge for the calibration certificate is 1,600.- CZK.

Please refer to page 23 how to configure the item number if you wish to order an inspection certificate or a calibration certificate for your test sieve.



* Main Series 'R 10 according to DIN 323

Test sieves cannot be returned!

■ SIEVING

Sieve Shakers
Evaluation Software
Test Sieves



Test Sieves

- according to ISO 3310-1
- optical inspection of the aperture size
- with laser-engraved serial number
- inspection certificate or calibration certificate available

Proven Quality

Each Retsch Test Sieve is supplied with a **COMPLIANCE CERTIFICATE**.

Retsch Test Sieves are available with an **INSPECTION CERTIFICATE** according to ISO 3310-1 (e.i. EN 10204 3.1.B). This inspection certificate shows the exact measuring data of the mesh. The surcharge for this certificate is 800.- CZK.

For sieves used as inspection equipment in ISO 9000 certified systems we offer a **CALIBRATION CERTIFICATE** according to ISO 3310-1 (e.i. EN 10204 3.1.B) with a higher statistical reliability. The surcharge for the calibration certificate is 1,600.- CZK.

Please refer to page 23 how to configure the item number if you wish to order an inspection certificate or a calibration certificate for your test sieve.

TEST SIEVES ACC. TO ISO 3310/1



Item No.	weight ^{appr.} (kg)	CZK	Mesh gauge
8" Ø x 2" height			
of stainless steel with wire gauze			
60.149.000020	0.350	16,448.-	20 µm *
60.149.000025	0.350	8,576.-	25 µm *
60.149.000032	0.350	4,960.-	32 µm *
60.149.000036	0.350	4,960.-	36 µm
60.149.000038	0.350	4,960.-	38 µm
60.149.000040	0.350	3,456.-	40 µm *
60.149.000045	0.350	3,456.-	45 µm
60.149.000050	0.350	2,944.-	50 µm *
60.149.000053	0.350	2,944.-	53 µm
60.149.000056	0.350	2,656.-	56 µm
60.149.000063	0.350	2,272.-	63 µm *
60.149.000071	0.350	2,272.-	71 µm
60.149.000075	0.350	2,272.-	75 µm
60.149.000080	0.350	2,272.-	80 µm *
60.149.000090	0.350	2,272.-	90 µm
60.149.000100	0.350	2,272.-	100 µm *
60.149.000106	0.350	2,272.-	106 µm
60.149.000112	0.350	2,272.-	112 µm
60.149.000125	0.350	2,272.-	125 µm *
60.149.000140	0.350	2,272.-	140 µm
60.149.000150	0.350	2,272.-	150 µm
60.149.000160	0.350	2,272.-	160 µm *
60.149.000180	0.350	2,272.-	180 µm
60.149.000200	0.350	2,272.-	200 µm *
60.149.000212	0.350	2,272.-	212 µm
60.149.000224	0.350	2,272.-	224 µm
60.149.000250	0.350	2,272.-	250 µm *
60.149.000280	0.350	2,272.-	280 µm
60.149.000300	0.350	2,272.-	300 µm
60.149.000315	0.350	2,272.-	315 µm *
60.149.000355	0.350	2,272.-	355 µm
60.149.000400	0.350	2,272.-	400 µm *
60.149.000425	0.350	2,272.-	425 µm
60.149.000450	0.350	2,272.-	450 µm
60.149.000500	0.350	2,272.-	500 µm *
60.149.000560	0.350	2,336.-	560 µm
60.149.000600	0.350	2,336.-	600 µm
60.149.000630	0.350	2,336.-	630 µm *
60.149.000710	0.350	2,336.-	710 µm
60.149.000800	0.350	2,336.-	800 µm *
60.149.000850	0.350	2,336.-	850 µm
60.149.000900	0.350	2,336.-	900 µm

Item No.	weight ^{appr.} (kg)	CZK	Mesh gauge
8" Ø x 2" height			
of stainless steel with wire gauze			
60.149.001000	0.350	2,464.-	1.00 mm *
60.149.001120	0.350	2,464.-	1.12 mm
60.149.001180	0.350	2,464.-	1.18 mm
60.149.001250	0.350	2,464.-	1.25 mm *
60.149.001400	0.350	2,464.-	1.40 mm
60.149.001600	0.350	2,464.-	1.60 mm *
60.149.001700	0.350	2,464.-	1.70 mm
60.149.001800	0.350	2,464.-	1.80 mm
60.149.002000	0.350	2,464.-	2.00 mm *
60.149.002240	0.350	2,464.-	2.24 mm
60.149.002360	0.350	2,464.-	2.36 mm
60.149.002500	0.350	2,464.-	2.50 mm *
60.149.002800	0.350	2,912.-	2.80 mm
60.149.003150	0.350	2,912.-	3.15 mm *
60.149.003350	0.350	2,912.-	3.35 mm
60.149.003550	0.350	2,912.-	3.55 mm
60.149.004000	0.350	2,912.-	4.00 mm *
60.149.004500	0.350	2,912.-	4.50 mm
60.149.004750	0.350	2,912.-	4.75 mm
60.149.005000	0.350	2,912.-	5.00 mm *
60.149.005600	0.350	2,912.-	5.60 mm
60.149.006300	0.350	2,912.-	6.30 mm *
60.149.006700	0.350	2,912.-	6.70 mm
60.149.007100	0.350	2,912.-	7.10 mm
60.149.008000	0.350	2,912.-	8.00 mm *
60.149.009000	0.350	2,912.-	9.00 mm
60.149.009500	0.350	2,912.-	9.50 mm
60.149.010000	0.350	3,296.-	10.00 mm *
60.149.011200	0.350	3,296.-	11.20 mm
60.149.012500	0.350	3,296.-	12.50 mm *
60.149.013200	0.350	3,296.-	13.20 mm
60.149.014000	0.350	3,296.-	14.00 mm
60.149.016000	0.350	3,296.-	16.00 mm *
60.149.018000	0.350	3,296.-	18.00 mm
60.149.019000	0.350	3,296.-	19.00 mm
60.149.020000	0.350	3,296.-	20.00 mm *
60.149.022400	0.350	3,296.-	22.40 mm
60.149.025000	0.350	3,296.-	25.00 mm *
60.149.026500	0.350	3,296.-	26.50 mm
60.149.028000	0.350	3,296.-	28.00 mm
60.149.031500	0.350	3,392.-	31.50 mm *
60.149.035500	0.350	3,392.-	35.50 mm
60.149.037500	0.350	3,392.-	37.50 mm
60.149.040000	0.350	3,392.-	40.00 mm *
60.149.045000	0.350	3,392.-	45.00 mm
60.149.050000	0.350	3,392.-	50.00 mm *
60.149.053000	0.350	3,392.-	53.00 mm
60.149.056000	0.350	3,392.-	56.00 mm
60.149.063000	0.350	3,392.-	63.00 mm *
60.149.071000	0.350	3,392.-	71.00 mm
60.149.075000	0.350	3,392.-	75.00 mm
60.149.080000	0.350	3,392.-	80.00 mm *
60.149.090000	0.350	3,392.-	90.00 mm
60.149.100000	0.350	3,392.-	100.00 mm *
60.149.106000	0.350	3,392.-	106.00 mm
60.149.112000	0.350	3,392.-	112.00 mm
60.149.125000	0.350	3,392.-	125.00 mm *

* Main Series 'R 10 according to DIN 323
Test sieves cannot be returned!

Retsch® TEST SIEVES ACC. TO ISO 3310/1

Item No.	weight <small>appr. (kg)</small>	CZK	Mesh gauge
100 mm Ø x 40 mm height			
of stainless steel with wire gauze			
60.106.000020	0.150	7,264.-	20 µm *
60.106.000025	0.150	4,256.-	25 µm *
60.106.000032	0.150	4,256.-	32 µm *
60.106.000036	0.150	3,232.-	36 µm
60.106.000038	0.150	3,232.-	38 µm
60.106.000040	0.150	2,912.-	40 µm *
60.106.000045	0.150	2,912.-	45 µm
60.106.000050	0.150	2,656.-	50 µm *
60.106.000053	0.150	2,656.-	53 µm
60.106.000056	0.150	1,984.-	56 µm
60.106.000063	0.150	1,984.-	63 µm *
60.106.000071	0.150	1,984.-	71 µm
60.106.000075	0.150	1,984.-	75 µm
60.106.000080	0.150	1,984.-	80 µm *
60.106.000090	0.150	1,984.-	90 µm
60.106.000100	0.150	1,984.-	100 µm *
60.106.000106	0.150	1,984.-	106 µm
60.106.000112	0.150	1,984.-	112 µm
60.106.000125	0.150	1,984.-	125 µm *
60.106.000140	0.150	1,984.-	140 µm
60.106.000150	0.150	1,984.-	150 µm
60.106.000160	0.150	1,984.-	160 µm *
60.106.000180	0.150	1,984.-	180 µm
60.106.000200	0.150	1,984.-	200 µm *
60.106.000212	0.150	1,984.-	212 µm
60.106.000224	0.150	1,984.-	224 µm
60.106.000250	0.150	1,984.-	250 µm *
60.106.000280	0.150	1,984.-	280 µm
60.106.000300	0.150	1,984.-	300 µm
60.106.000315	0.150	1,984.-	315 µm *
60.106.000355	0.150	1,984.-	355 µm
60.106.000400	0.150	1,984.-	400 µm *
60.106.000425	0.150	1,984.-	425 µm
60.106.000450	0.150	1,984.-	450 µm
60.106.000500	0.150	1,984.-	500 µm *
60.106.000560	0.150	2,080.-	560 µm
60.106.000600	0.150	2,080.-	600 µm
60.106.000630	0.150	2,080.-	630 µm *
60.106.000710	0.150	2,080.-	710 µm
60.106.000800	0.150	2,080.-	800 µm *
60.106.000850	0.150	2,080.-	850 µm
60.106.000900	0.150	2,080.-	900 µm

Item No.	weight <small>appr. (kg)</small>	CZK	Mesh gauge
100 mm Ø x 40 mm height			
of stainless steel with wire gauze			
60.106.001000	0.150	2,080.-	1.00 mm *
60.106.001120	0.150	2,080.-	1.12 mm
60.106.001180	0.150	2,080.-	1.18 mm
60.106.001250	0.150	2,080.-	1.25 mm *
60.106.001400	0.150	2,080.-	1.40 mm
60.106.001600	0.150	2,080.-	1.60 mm *
60.106.001700	0.150	2,080.-	1.70 mm
60.106.001800	0.150	2,080.-	1.80 mm
60.106.002000	0.150	2,080.-	2.00 mm *
60.106.002240	0.150	2,080.-	2.24 mm
60.106.002360	0.150	2,080.-	2.36 mm
60.106.002500	0.150	2,080.-	2.50 mm *
60.106.002800	0.150	2,080.-	2.80 mm
60.106.003150	0.150	2,080.-	3.15 mm *
60.106.003350	0.150	2,080.-	3.35 mm
60.106.003550	0.150	2,080.-	3.55 mm
60.106.004000	0.150	2,080.-	4.00 mm *
60.106.004500	0.150	2,112.-	4.50 mm
60.106.004750	0.150	2,112.-	4.75 mm
60.106.005000	0.150	2,112.-	5.00 mm *
60.106.005600	0.150	2,112.-	5.60 mm
60.106.006300	0.150	2,112.-	6.30 mm *
60.106.006700	0.150	2,112.-	6.70 mm
60.106.007100	0.150	2,112.-	7.10 mm
60.106.008000	0.150	2,112.-	8.00 mm *
60.106.009000	0.150	2,112.-	9.00 mm
60.106.009500	0.150	2,112.-	9.50 mm
60.106.010000	0.150	2,112.-	10.00 mm *
60.106.011200	0.150	2,112.-	11.20 mm
60.106.012500	0.150	2,112.-	12.50 mm *
60.106.013200	0.150	2,176.-	13.20 mm
60.106.014000	0.150	2,176.-	14.00 mm
60.106.016000	0.150	2,176.-	16.00 mm *
60.106.018000	0.150	2,176.-	18.00 mm
60.106.019000	0.150	2,176.-	19.00 mm
60.106.020000	0.150	2,944.-	20.00 mm *
60.106.022400	0.150	2,944.-	22.40 mm
60.106.025000	0.150	2,944.-	25.00 mm *
60.106.026500	0.150	2,944.-	26.50 mm
60.106.028000	0.150	2,944.-	28.00 mm
60.106.031500	0.150	2,944.-	31.50 mm *
60.106.035500	0.150	2,944.-	35.50 mm
60.106.037500	0.150	2,944.-	37.50 mm
60.106.040000	0.150	2,944.-	40.00 mm *
60.106.045000	0.150	2,944.-	45.00 mm

■ SIEVING

Sieve Shakers
Evaluation Software
Test Sieves



Test Sieves

- according to ISO 3310-1
- optical inspection of the aperture size
- with laser-engraved serial number
- inspection certificate or calibration certificate available

Proven Quality

Each Retsch Test Sieve is supplied with a **COMPLIANCE CERTIFICATE**.

Retsch Test Sieves are available with an **INSPECTION CERTIFICATE** according to ISO 3310-1 (e.i. EN 10204 3.1.B). This inspection certificate shows the exact measuring data of the mesh. The surcharge for this certificate is 800.- CZK.

For sieves used as inspection equipment in ISO 9000 certified systems we offer a **CALIBRATION CERTIFICATE** according to ISO 3310-1 (e.i. EN 10204 3.1.B) with a higher statistical reliability. The surcharge for the calibration certificate is 1,600.- CZK.

Please refer to page 23 how to configure the item number if you wish to order an inspection certificate or a calibration certificate for your test sieve.



* Main Series 'R 10 according to DIN 323

Test sieves cannot be returned!

■ SIEVING

Sieve Shakers
Evaluation Software
Test Sieves



Test Sieves

- according to ISO 3310-1
- optical inspection of the aperture size
- with laser-engraved serial number
- inspection certificate or calibration certificate available

Proven Quality

Each Retsch Test Sieve is supplied with a **COMPLIANCE CERTIFICATE**.

Retsch Test Sieves are available with an **INSPECTION CERTIFICATE** according to ISO 3310-1 (e.i. EN 10204 3.1.B). This inspection certificate shows the exact measuring data of the mesh. The surcharge for this certificate is 800.- CZK.

For sieves used as inspection equipment in ISO 9000 certified systems we offer a **CALIBRATION CERTIFICATE** according to ISO 3310-1 (e.i. EN 10204 3.1.B) with a higher statistical reliability. The surcharge for the calibration certificate is 1,600.- CZK.

Please refer to page 23 how to configure the item number if you wish to order an inspection certificate or a calibration certificate for your test sieve.

TEST SIEVES ACC. TO ISO 3310/1



Item No.	weight ^{app.} (kg)	CZK	Mesh gauge
150 mm Ø x 50 mm height			
of stainless steel with wire gauze			
60.116.000020	0.200	15,104.-	20 µm *
60.116.000025	0.200	8,032.-	25 µm *
60.116.000032	0.200	5,056.-	32 µm *
60.116.000036	0.200	4,608.-	36 µm
60.116.000038	0.200	4,608.-	38 µm
60.116.000040	0.200	3,168.-	40 µm *
60.116.000045	0.200	3,168.-	45 µm
60.116.000050	0.200	2,720.-	50 µm *
60.116.000053	0.200	2,720.-	53 µm
60.116.000056	0.200	2,560.-	56 µm
60.116.000063	0.200	2,560.-	63 µm *
60.116.000071	0.200	2,112.-	71 µm
60.116.000075	0.200	2,112.-	75 µm
60.116.000080	0.200	2,112.-	80 µm *
60.116.000090	0.200	2,112.-	90 µm
60.116.000100	0.200	2,112.-	100 µm *
60.116.000106	0.200	2,112.-	106 µm
60.116.000112	0.200	2,112.-	112 µm
60.116.000125	0.200	2,112.-	125 µm *
60.116.000140	0.200	2,112.-	140 µm
60.116.000150	0.200	2,112.-	150 µm
60.116.000160	0.200	2,112.-	160 µm *
60.116.000180	0.200	2,112.-	180 µm
60.116.000200	0.200	2,112.-	200 µm *
60.116.000212	0.200	2,112.-	212 µm
60.116.000224	0.200	2,112.-	224 µm
60.116.000250	0.200	2,112.-	250 µm *
60.116.000280	0.200	2,112.-	280 µm
60.116.000300	0.200	2,112.-	300 µm
60.116.000315	0.200	2,112.-	315 µm *
60.116.000355	0.200	2,112.-	355 µm
60.116.000400	0.200	2,112.-	400 µm *
60.116.000425	0.200	2,112.-	425 µm
60.116.000450	0.200	2,112.-	450 µm
60.116.000500	0.200	2,112.-	500 µm *
60.116.000560	0.200	2,112.-	560 µm
60.116.000600	0.200	2,112.-	600 µm
60.116.000630	0.200	2,112.-	630 µm *
60.116.000710	0.200	2,112.-	710 µm
60.116.000800	0.200	2,112.-	800 µm *
60.116.000850	0.200	2,112.-	850 µm
60.116.000900	0.200	2,112.-	900 µm

Item No.	weight ^{app.} (kg)	CZK	Mesh gauge
150 mm Ø x 50 mm height			
of stainless steel with wire gauze			
60.116.001000	0.200	2,240.-	1.00 mm *
60.116.001120	0.200	2,240.-	1.12 mm
60.116.001180	0.200	2,240.-	1.18 mm
60.116.001250	0.200	2,240.-	1.25 mm *
60.116.001400	0.200	2,240.-	1.40 mm
60.116.001600	0.200	2,240.-	1.60 mm *
60.116.001700	0.200	2,240.-	1.70 mm
60.116.001800	0.200	2,240.-	1.80 mm
60.116.002000	0.200	2,240.-	2.00 mm *
60.116.002240	0.200	2,240.-	2.24 mm
60.116.002360	0.200	2,240.-	2.36 mm
60.116.002500	0.200	2,240.-	2.50 mm *
60.116.002800	0.200	2,592.-	2.80 mm
60.116.003150	0.200	2,592.-	3.15 mm *
60.116.003350	0.200	2,592.-	3.35 mm
60.116.003550	0.200	2,592.-	3.55 mm
60.116.004000	0.200	2,592.-	4.00 mm *
60.116.004500	0.200	2,592.-	4.50 mm
60.116.004750	0.200	2,592.-	4.75 mm
60.116.005000	0.200	2,592.-	5.00 mm *
60.116.005600	0.200	2,592.-	5.60 mm
60.116.006300	0.200	2,592.-	6.30 mm *
60.116.006700	0.200	2,592.-	6.70 mm
60.116.007100	0.200	2,592.-	7.10 mm
60.116.008000	0.200	2,592.-	8.00 mm *
60.116.009000	0.200	2,592.-	9.00 mm
60.116.009500	0.200	2,592.-	9.50 mm
60.116.010000	0.200	3,040.-	10.00 mm *
60.116.011200	0.200	3,040.-	11.20 mm
60.116.012500	0.200	3,040.-	12.50 mm *
60.116.013200	0.200	3,040.-	13.20 mm
60.116.014000	0.200	3,040.-	14.00 mm
60.116.016000	0.200	3,040.-	16.00 mm *
60.116.018000	0.200	3,040.-	18.00 mm
60.116.019000	0.200	3,040.-	19.00 mm
60.116.020000	0.200	3,040.-	20.00 mm *
60.116.022400	0.200	3,040.-	22.40 mm
60.116.025000	0.200	3,040.-	25.00 mm *
60.116.026500	0.200	3,136.-	26.50 mm
60.116.028000	0.200	3,136.-	28.00 mm
60.116.031500	0.200	3,136.-	31.50 mm *
60.116.035500	0.200	3,136.-	35.50 mm
60.116.037500	0.200	3,136.-	37.50 mm
60.116.040000	0.200	3,136.-	40.00 mm *
60.116.045000	0.200	3,136.-	45.00 mm

* Main Series 'R 10 according to DIN 323
Test sieves cannot be returned!

www.retsch.com

Retsch® TEST SIEVES ACC. TO ISO 3310/1

Item No.	weight <small>appr. (kg)</small>	CZK	Mesh gauge
305 mm Ø x 40 mm height			
of stainless steel with wire gauze			
60.158.000025	1.000	15,008.-	25 µm *
60.158.000032	1.000	10,624.-	32 µm *
60.158.000036	1.000	8,768.-	36 µm
60.158.000038	1.000	8,096.-	38 µm
60.158.000040	1.000	5,952.-	40 µm *
60.158.000045	1.000	5,888.-	45 µm
60.158.000050	1.000	4,736.-	50 µm *
60.158.000053	1.000	4,640.-	53 µm
60.158.000056	1.000	4,480.-	56 µm
60.158.000063	1.000	4,224.-	63 µm *
60.158.000071	1.000	3,904.-	71 µm
60.158.000075	1.000	3,904.-	75 µm
60.158.000080	1.000	3,904.-	80 µm *
60.158.000090	1.000	3,904.-	90 µm
60.158.000100	1.000	3,904.-	100 µm *
60.158.000106	1.000	3,904.-	106 µm
60.158.000112	1.000	3,904.-	112 µm
60.158.000125	1.000	3,904.-	125 µm *
60.158.000140	1.000	3,904.-	140 µm
60.158.000150	1.000	3,904.-	150 µm
60.158.000160	1.000	3,904.-	160 µm *
60.158.000180	1.000	3,904.-	180 µm
60.158.000200	1.000	3,904.-	200 µm *
60.158.000212	1.000	3,904.-	212 µm
60.158.000224	1.000	3,904.-	224 µm
60.158.000250	1.000	3,904.-	250 µm *
60.158.000280	1.000	3,904.-	280 µm
60.158.000300	1.000	3,904.-	300 µm
60.158.000315	1.000	3,904.-	315 µm *
60.158.000355	1.000	3,904.-	355 µm
60.158.000400	1.000	3,904.-	400 µm *
60.158.000425	1.000	3,904.-	425 µm
60.158.000450	1.000	3,904.-	450 µm
60.158.000500	1.000	3,904.-	500 µm *
60.158.000560	1.000	3,904.-	560 µm
60.158.000600	1.000	3,904.-	600 µm
60.158.000630	1.000	3,904.-	630 µm *
60.158.000710	1.000	3,904.-	710 µm
60.158.000800	1.000	3,904.-	800 µm *
60.158.000850	1.000	3,904.-	850 µm
60.158.000900	1.000	3,904.-	900 µm

Item No.	weight <small>appr. (kg)</small>	CZK	Mesh gauge
305 mm Ø x 40 mm height			
of stainless steel with wire gauze			
60.158.001000	1.000	3,904.-	1.00 mm *
60.158.001120	1.000	3,904.-	1.12 mm
60.158.001180	1.000	3,904.-	1.18 mm
60.158.001250	1.000	3,904.-	1.25 mm *
60.158.001400	1.000	3,904.-	1.40 mm
60.158.001600	1.000	3,904.-	1.60 mm *
60.158.001700	1.000	3,904.-	1.70 mm
60.158.001800	1.000	3,904.-	1.80 mm
60.158.002000	1.000	3,904.-	2.00 mm *
60.158.002240	1.000	3,904.-	2.24 mm
60.158.002360	1.000	3,904.-	2.36 mm
60.158.002500	1.000	3,904.-	2.50 mm *
60.158.002800	1.000	4,736.-	2.80 mm
60.158.003150	1.000	4,736.-	3.15 mm *
60.158.003350	1.000	4,736.-	3.35 mm
60.158.003550	1.000	4,736.-	3.55 mm
60.158.004000	1.000	4,736.-	4.00 mm *
60.158.004500	1.000	4,736.-	4.50 mm
60.158.004750	1.000	4,736.-	4.75 mm
60.158.005000	1.000	4,736.-	5.00 mm *
60.158.005600	1.000	4,736.-	5.60 mm
60.158.006300	1.000	4,736.-	6.30 mm *
60.158.006700	1.000	4,736.-	6.70 mm
60.158.007100	1.000	4,736.-	7.10 mm
60.158.008000	1.000	4,736.-	8.00 mm *
60.158.009000	1.000	4,736.-	9.00 mm
60.158.009500	1.000	4,736.-	9.50 mm
60.158.010000	1.000	5,056.-	10.00 mm *
60.158.011200	1.000	5,056.-	11.20 mm
60.158.012500	1.000	5,056.-	12.50 mm *
60.158.013200	1.000	5,056.-	13.20 mm
60.158.014000	1.000	5,056.-	14.00 mm
60.158.016000	1.000	5,056.-	16.00 mm *
60.158.018000	1.000	5,056.-	18.00 mm
60.158.019000	1.000	5,056.-	19.00 mm
60.158.020000	1.000	5,056.-	20.00 mm *
60.158.022400	1.000	5,056.-	22.40 mm
60.158.025000	1.000	5,056.-	25.00 mm *
60.158.026500	1.000	5,376.-	26.50 mm
60.158.028000	1.000	5,376.-	28.00 mm
60.158.031500	1.000	5,376.-	31.50 mm *
60.158.035500	1.000	5,376.-	35.50 mm
60.158.037500	1.000	5,376.-	37.50 mm
60.158.040000	1.000	5,376.-	40.00 mm *
60.158.045000	1.000	5,376.-	45.00 mm
60.158.050000	1.000	5,376.-	50.00 mm *
60.158.053000	1.000	5,376.-	53.00 mm
60.158.056000	1.000	5,376.-	56.00 mm
60.158.063000	1.000	5,376.-	63.00 mm *
60.158.071000	1.000	5,376.-	71.00 mm
60.158.075000	1.000	5,376.-	75.00 mm
60.158.080000	1.000	5,376.-	80.00 mm *
60.158.090000	1.000	5,376.-	90.00 mm
60.158.100000	1.000	5,376.-	100.00 mm *
60.158.106000	1.000	5,376.-	106.00 mm
60.158.112000	1.000	5,376.-	112.00 mm
60.158.125000	1.000	5,376.-	125.00 mm *

■ SIEVING

Sieve Shakers
Evaluation Software
Test Sieves



Test Sieves

- according to ISO 3310-1
- optical inspection of the aperture size
- with laser-engraved serial number
- inspection certificate or calibration certificate available

Proven Quality

Each Retsch Test Sieve is supplied with a **COMPLIANCE CERTIFICATE**.

Retsch Test Sieves are available with an **INSPECTION CERTIFICATE** according to ISO 3310-1 (e.i. EN 10204 3.1.B). This inspection certificate shows the exact measuring data of the mesh. The surcharge for this certificate is 800.- CZK.

For sieves used as inspection equipment in ISO 9000 certified systems we offer a **CALIBRATION CERTIFICATE** according to ISO 3310-1 (e.i. EN 10204 3.1.B) with a higher statistical reliability. The surcharge for the calibration certificate is 1,600.- CZK.

Please refer to page 23 how to configure the item number if you wish to order an inspection certificate or a calibration certificate for your test sieve.



* Main Series 'R 10 according to DIN 323
Test sieves cannot be returned!

■ SIEVING

Sieve Shakers
Evaluation Software
Test Sieves



Test Sieves

- according to ISO 3310-1
- optical inspection of the aperture size
- with laser-engraved serial number
- inspection certificate or calibration certificate available

Proven Quality

Each Retsch Test Sieve is supplied with a **COMPLIANCE CERTIFICATE**.

Retsch Test Sieves are available with an **INSPECTION CERTIFICATE** according to ISO 3310-1 (e.i. EN 10204 3.1.B). This inspection certificate shows the exact measuring data of the mesh. The surcharge for this certificate is 800.- CZK.

For sieves used as inspection equipment in ISO 9000 certified systems we offer a **CALIBRATION CERTIFICATE** according to ISO 3310-1 (e.i. EN 10204 3.1.B) with a higher statistical reliability. The surcharge for the calibration certificate is 1,600.- CZK.

Please refer to page 23 how to configure the item number if you wish to order an inspection certificate or a calibration certificate for your test sieve.

TEST SIEVES ACC. TO ISO 3310/1



Item No.	weight ^{appx.} (kg)	CZK	Mesh gauge
400 mm Ø x 65 mm height of stainless steel with wire gauze			
60.166.000025	1.600	22,432.-	25 µm *
60.166.000032	1.600	14,912.-	32 µm *
60.166.000036	1.600	13,504.-	36 µm
60.166.000038	1.600	13,024.-	38 µm
60.166.000040	1.600	9,600.-	40 µm *
60.166.000045	1.600	9,248.-	45 µm
60.166.000050	1.600	7,936.-	50 µm *
60.166.000053	1.600	7,616.-	53 µm
60.166.000056	1.600	7,168.-	56 µm
60.166.000063	1.600	6,816.-	63 µm *
60.166.000071	1.600	6,176.-	71 µm
60.166.000075	1.600	6,176.-	75 µm
60.166.000080	1.600	6,176.-	80 µm *
60.166.000090	1.600	6,176.-	90 µm
60.166.000100	1.600	6,176.-	100 µm *
60.166.000106	1.600	6,176.-	106 µm
60.166.000112	1.600	6,176.-	112 µm
60.166.000125	1.600	6,176.-	125 µm *
60.166.000140	1.600	6,176.-	140 µm
60.166.000150	1.600	6,176.-	150 µm
60.166.000160	1.600	6,176.-	160 µm *
60.166.000180	1.600	6,176.-	180 µm
60.166.000200	1.600	6,176.-	200 µm *
60.166.000212	1.600	6,176.-	212 µm
60.166.000224	1.600	6,176.-	224 µm
60.166.000250	1.600	6,176.-	250 µm *
60.166.000280	1.600	6,176.-	280 µm
60.166.000300	1.600	6,176.-	300 µm
60.166.000315	1.600	6,176.-	315 µm *
60.166.000355	1.600	6,176.-	355 µm
60.166.000400	1.600	6,176.-	400 µm *
60.166.000425	1.600	6,176.-	425 µm
60.166.000450	1.600	6,176.-	450 µm
60.166.000500	1.600	6,176.-	500 µm *
60.166.000560	1.600	6,176.-	560 µm
60.166.000600	1.600	6,176.-	600 µm
60.166.000630	1.600	6,176.-	630 µm *
60.166.000710	1.600	6,176.-	710 µm
60.166.000800	1.600	6,176.-	800 µm *
60.166.000850	1.600	6,176.-	850 µm
60.166.000900	1.600	6,176.-	900 µm

Item No.	weight ^{appx.} (kg)	CZK	Mesh gauge
400 mm Ø x 65 mm height of stainless steel with wire gauze			
60.166.001000	1.600	6,176.-	1.00 mm *
60.166.001120	1.600	6,176.-	1.12 mm
60.166.001180	1.600	6,176.-	1.18 mm
60.166.001250	1.600	6,176.-	1.25 mm *
60.166.001400	1.600	6,176.-	1.40 mm
60.166.001600	1.600	6,176.-	1.60 mm *
60.166.001700	1.600	6,176.-	1.70 mm
60.166.001800	1.600	6,176.-	1.80 mm
60.166.002000	1.600	6,176.-	2.00 mm *
60.166.002240	1.600	6,176.-	2.24 mm
60.166.002360	1.600	6,176.-	2.36 mm
60.166.002500	1.600	6,176.-	2.50 mm *
60.166.002800	1.600	7,296.-	2.80 mm
60.166.003150	1.600	7,296.-	3.15 mm *
60.166.003350	1.600	7,296.-	3.35 mm
60.166.003550	1.600	7,296.-	3.55 mm
60.166.004000	1.600	7,296.-	4.00 mm *
60.166.004500	1.600	7,296.-	4.50 mm
60.166.004750	1.600	7,296.-	4.75 mm
60.166.005000	1.600	7,296.-	5.00 mm *
60.166.005600	1.600	7,296.-	5.60 mm
60.166.006300	1.600	7,296.-	6.30 mm *
60.166.006700	1.600	7,296.-	6.70 mm
60.166.007100	1.600	7,296.-	7.10 mm
60.166.008000	1.600	7,296.-	8.00 mm *
60.166.009000	1.600	7,296.-	9.00 mm
60.166.009500	1.600	7,296.-	9.50 mm
60.166.010000	1.600	8,640.-	10.00 mm *
60.166.011200	1.600	8,640.-	11.20 mm
60.166.012500	1.600	8,640.-	12.50 mm *
60.166.013200	1.600	8,640.-	13.20 mm
60.166.014000	1.600	8,640.-	14.00 mm
60.166.016000	1.600	8,640.-	16.00 mm *
60.166.018000	1.600	8,640.-	18.00 mm
60.166.019000	1.600	8,640.-	19.00 mm
60.166.020000	1.600	8,640.-	20.00 mm *
60.166.022400	1.600	8,640.-	22.40 mm
60.166.025000	1.600	8,640.-	25.00 mm *
60.166.026500	1.600	9,568.-	26.50 mm
60.166.028000	1.600	9,568.-	28.00 mm
60.166.031500	1.600	9,568.-	31.50 mm *
60.166.035500	1.600	9,568.-	35.50 mm
60.166.037500	1.600	9,568.-	37.50 mm
60.166.040000	1.600	9,568.-	40.00 mm *
60.166.045000	1.600	9,568.-	45.00 mm
60.166.050000	1.600	9,568.-	50.00 mm *
60.166.053000	1.600	9,952.-	53.00 mm
60.166.056000	1.600	9,952.-	56.00 mm
60.166.063000	1.600	9,952.-	63.00 mm *
60.166.071000	1.600	9,952.-	71.00 mm
60.166.075000	1.600	9,952.-	75.00 mm
60.166.080000	1.600	9,952.-	80.00 mm *
60.166.090000	1.600	9,952.-	90.00 mm
60.166.100000	1.600	9,952.-	100.00 mm *
60.166.106000	1.600	9,952.-	106.00 mm
60.166.112000	1.600	9,952.-	112.00 mm
60.166.125000	1.600	9,952.-	125.00 mm *

* Main Series 'R 10 according to DIN 323
Test sieves cannot be returned!

Item No.	weight <small>appr. (kg)</small>	CZK	Mesh gauge
----------	----------------------------------	-----	------------

200 mm Ø x 50 mm height of stainless steel with wire gauze

60.132.000020	0.350	16,448.-	20 µm 635 Mesh
60.132.000025	0.350	8,576.-	25 µm 500 Mesh
60.132.000032	0.350	4,960.-	32 µm 450 Mesh
60.132.000038	0.350	4,960.-	38 µm 400 Mesh
60.132.000045	0.350	3,456.-	45 µm 325 Mesh
60.132.000053	0.350	2,944.-	53 µm 270 Mesh
60.132.000063	0.350	2,272.-	63 µm 230 Mesh
60.132.000075	0.350	2,272.-	75 µm 200 Mesh
60.132.000090	0.350	2,272.-	90 µm 170 Mesh
60.132.000106	0.350	2,272.-	106 µm 140 Mesh
60.132.000125	0.350	2,272.-	125 µm 120 Mesh
60.132.000150	0.350	2,272.-	150 µm 100 Mesh
60.132.000180	0.350	2,272.-	180 µm 80 Mesh
60.132.000212	0.350	2,272.-	212 µm 70 Mesh
60.132.000250	0.350	2,272.-	250 µm 60 Mesh
60.132.000300	0.350	2,272.-	300 µm 50 Mesh
60.132.000355	0.350	2,272.-	355 µm 45 Mesh
60.132.000425	0.350	2,272.-	425 µm 40 Mesh
60.132.000500	0.350	2,272.-	500 µm 35 Mesh
60.132.000600	0.350	2,336.-	600 µm 30 Mesh
60.132.000710	0.350	2,336.-	710 µm 25 Mesh
60.132.000850	0.350	2,336.-	850 µm 20 Mesh
60.132.001000	0.350	2,464.-	1.00 mm 18 Mesh
60.132.001180	0.350	2,464.-	1.18 mm 16 Mesh
60.132.001400	0.350	2,464.-	1.40 mm 14 Mesh
60.132.001700	0.350	2,464.-	1.70 mm 12 Mesh
60.132.002000	0.350	2,464.-	2.00 mm 10 Mesh
60.132.002360	0.350	2,464.-	2.36 mm 8 Mesh
60.132.002800	0.350	2,912.-	2.80 mm 7 Mesh
60.132.003350	0.350	2,912.-	3.35 mm 6 Mesh
60.132.004000	0.350	2,912.-	4.00 mm 5 Mesh
60.132.004750	0.350	2,912.-	4.75 mm 4 Mesh
60.132.005600	0.350	2,912.-	5.60 mm 3.5 Mesh
60.132.006300	0.350	2,912.-	6.30 mm 1/4"
60.132.006700	0.350	2,912.-	6.70 mm 0.265"
60.132.008000	0.350	2,912.-	8.00 mm 5/16"
60.132.009500	0.350	2,912.-	9.50 mm 3/8"
60.132.011200	0.350	3,296.-	11.20 mm 7/16"
60.132.012500	0.350	3,296.-	12.50 mm 1/2"
60.132.013200	0.350	3,296.-	13.20 mm 0.530"
60.132.016000	0.350	3,296.-	16.00 mm 5/8"
60.132.019000	0.350	3,296.-	19.00 mm 3/4"
60.132.022400	0.350	3,296.-	22.40 mm 7/8"
60.132.025000	0.350	3,296.-	25.00 mm 1"
60.132.026500	0.350	3,296.-	26.50 mm 1.06"
60.132.031500	0.350	3,392.-	31.50 mm 1 1/4"
60.132.037500	0.350	3,392.-	37.50 mm 1 1/2"
60.132.045000	0.350	3,392.-	45.00 mm 1 3/4"
60.132.050000	0.350	3,392.-	50.00 mm 2"
60.132.053000	0.350	3,392.-	53.00 mm 2.12"
60.132.063000	0.350	3,392.-	63.00 mm 2 1/2"
60.132.075000	0.350	3,392.-	75.00 mm 3"
60.132.090000	0.350	3,392.-	90.00 mm 3 1/2"
60.132.100000	0.350	3,392.-	100.00 mm 4"
60.132.106000	0.350	3,392.-	106.00 mm 4.24"
60.132.125000	0.350	3,392.-	125.00 mm 5"

Item No.	weight <small>appr. (kg)</small>	CZK	Mesh gauge
----------	----------------------------------	-----	------------

200 mm Ø x 25 mm height of stainless steel with wire gauze

60.123.000020	0.200	16,448.-	20 µm 635 Mesh
60.123.000025	0.200	8,576.-	25 µm 500 Mesh
60.123.000032	0.200	4,960.-	32 µm 450 Mesh
60.123.000038	0.200	4,960.-	38 µm 400 Mesh
60.123.000045	0.200	3,456.-	45 µm 325 Mesh
60.123.000053	0.200	2,944.-	53 µm 270 Mesh
60.123.000063	0.200	2,272.-	63 µm 230 Mesh
60.123.000075	0.200	2,272.-	75 µm 200 Mesh
60.123.000090	0.200	2,272.-	90 µm 170 Mesh
60.123.000106	0.200	2,272.-	106 µm 140 Mesh
60.123.000125	0.200	2,272.-	125 µm 120 Mesh
60.123.000150	0.200	2,272.-	150 µm 100 Mesh
60.123.000180	0.200	2,272.-	180 µm 80 Mesh
60.123.000212	0.200	2,272.-	212 µm 70 Mesh
60.123.000250	0.200	2,272.-	250 µm 60 Mesh
60.123.000300	0.200	2,272.-	300 µm 50 Mesh
60.123.000355	0.200	2,272.-	355 µm 45 Mesh
60.123.000425	0.200	2,272.-	425 µm 40 Mesh
60.123.000500	0.200	2,272.-	500 µm 35 Mesh
60.123.000600	0.200	2,336.-	600 µm 30 Mesh
60.123.000710	0.200	2,336.-	710 µm 25 Mesh
60.123.000850	0.200	2,336.-	850 µm 20 Mesh
60.123.001000	0.200	2,464.-	1.00 mm 18 Mesh
60.123.001180	0.200	2,464.-	1.18 mm 16 Mesh
60.123.001400	0.200	2,464.-	1.40 mm 14 Mesh
60.123.001700	0.200	2,464.-	1.70 mm 12 Mesh
60.123.002000	0.200	2,464.-	2.00 mm 10 Mesh
60.123.002360	0.200	2,464.-	2.36 mm 8 Mesh
60.123.002800	0.200	2,912.-	2.80 mm 7 Mesh
60.123.003350	0.200	2,912.-	3.35 mm 6 Mesh
60.123.004000	0.200	2,912.-	4.00 mm 5 Mesh
60.123.004750	0.200	2,912.-	4.75 mm 4 Mesh
60.123.005600	0.200	2,912.-	5.60 mm 3.5 Mesh
60.123.006300	0.200	2,912.-	6.30 mm 1/4"
60.123.006700	0.200	2,912.-	6.70 mm 0.265"
60.123.008000	0.200	2,912.-	8.00 mm 5/16"
60.123.009500	0.200	2,912.-	9.50 mm 3/8"
60.123.011200	0.200	3,296.-	11.20 mm 7/16"
60.123.012500	0.200	3,296.-	12.50 mm 1/2"
60.123.013200	0.200	3,296.-	13.20 mm 0.530"
60.123.016000	0.200	3,296.-	16.00 mm 5/8"
60.123.019000	0.200	3,296.-	19.00 mm 3/4"
60.123.022400	0.200	3,296.-	22.40 mm 7/8"
60.123.025000	0.200	3,296.-	25.00 mm 1"
60.123.026500	0.200	3,296.-	26.50 mm 1.06"
60.123.031500	0.200	3,392.-	31.50 mm 1 1/4"
60.123.037500	0.200	3,392.-	37.50 mm 1 1/2"
60.123.045000	0.200	3,392.-	45.00 mm 1 3/4"
60.123.050000	0.200	3,392.-	50.00 mm 2"
60.123.053000	0.200	3,392.-	53.00 mm 2.12"
60.123.063000	0.200	3,392.-	63.00 mm 2 1/2"
60.123.075000	0.200	3,392.-	75.00 mm 3"
60.123.090000	0.200	3,392.-	90.00 mm 3 1/2"
60.123.100000	0.200	3,392.-	100.00 mm 4"
60.123.106000	0.200	3,392.-	106.00 mm 4.24"
60.123.125000	0.200	3,392.-	125.00 mm 5"

SIEVING

Sieve Shakers
Evaluation Software
Test Sieves



Test Sieves

- according to ASTM E 11
- optical inspection of the aperture size
- with laser-engraved serial number
- inspection certificate or calibration certificate available

Proven Quality

Each Retsch Test Sieve is supplied with a **COMPLIANCE CERTIFICATE**.

Retsch Test Sieves are available with an **INSPECTION CERTIFICATE** according to ISO 3310-1 (e.i. EN 10204 3.1.B). This inspection certificate shows the exact measuring data of the mesh. The surcharge for this certificate is 800.- CZK.

Please refer to page 23 how to configure the item number if you wish to order an inspection certificate for your test sieve.



Test sieves cannot be returned!

■ SIEVING

Sieve Shakers
Evaluation Software
Test Sieves



Test Sieves

- according to ASTM E 11
- optical inspection of the aperture size
- with laser-engraved serial number
- inspection certificate or calibration certificate available

Proven Quality

Each Retsch Test Sieve is supplied with a **COMPLIANCE CERTIFICATE**.

Retsch Test Sieves are available with an **INSPECTION CERTIFICATE** according to ISO 3310-1 (e.i. EN 10204 3.1.B). This inspection certificate shows the exact measuring data of the mesh. The surcharge for this certificate is 800.- CZK.

Please refer to page 23 how to configure the item number if you wish to order an inspection certificate for your test sieve.

TEST SIEVES ACC. TO ASTM E 11



Item No.	weight ^{appr.} (kg)	CZK	Mesh gauge
8" Ø x 2" height			
of stainless steel with wire gauze			
60.150.000020	0.350	16,448.-	20 µm 635 Mesh
60.150.000025	0.350	8,576.-	25 µm 500 Mesh
60.150.000032	0.350	4,960.-	32 µm 450 Mesh
60.150.000038	0.350	4,960.-	38 µm 400 Mesh
60.150.000045	0.350	3,456.-	45 µm 325 Mesh
60.150.000053	0.350	2,944.-	53 µm 270 Mesh
60.150.000063	0.350	2,272.-	63 µm 230 Mesh
60.150.000075	0.350	2,272.-	75 µm 200 Mesh
60.150.000090	0.350	2,272.-	90 µm 170 Mesh
60.150.000106	0.350	2,272.-	106 µm 140 Mesh
60.150.000125	0.350	2,272.-	125 µm 120 Mesh
60.150.000150	0.350	2,272.-	150 µm 100 Mesh
60.150.000180	0.350	2,272.-	180 µm 80 Mesh
60.150.000212	0.350	2,272.-	212 µm 70 Mesh
60.150.000250	0.350	2,272.-	250 µm 60 Mesh
60.150.000300	0.350	2,272.-	300 µm 50 Mesh
60.150.000355	0.350	2,272.-	355 µm 45 Mesh
60.150.000425	0.350	2,272.-	425 µm 40 Mesh
60.150.000500	0.350	2,272.-	500 µm 35 Mesh
60.150.000600	0.350	2,336.-	600 µm 30 Mesh
60.150.000710	0.350	2,336.-	710 µm 25 Mesh
60.150.000850	0.350	2,336.-	850 µm 20 Mesh
60.150.001000	0.350	2,464.-	1.00 mm 18 Mesh
60.150.001180	0.350	2,464.-	1.18 mm 16 Mesh
60.150.001400	0.350	2,464.-	1.40 mm 14 Mesh
60.150.001700	0.350	2,464.-	1.70 mm 12 Mesh
60.150.002000	0.350	2,464.-	2.00 mm 10 Mesh
60.150.002360	0.350	2,464.-	2.36 mm 8 Mesh
60.150.002800	0.350	2,912.-	2.80 mm 7 Mesh
60.150.003350	0.350	2,912.-	3.35 mm 6 Mesh
60.150.004000	0.350	2,912.-	4.00 mm 5 Mesh
60.150.004750	0.350	2,912.-	4.75 mm 4 Mesh
60.150.005600	0.350	2,912.-	5.60 mm 3.5 Mesh
60.150.006300	0.350	2,912.-	6.30 mm 1/4"
60.150.006700	0.350	2,912.-	6.70 mm 0.265"
60.150.008000	0.350	2,912.-	8.00 mm 5/16"
60.150.009500	0.350	2,912.-	9.50 mm 3/8"
60.150.011200	0.350	3,296.-	11.20 mm 7/16"
60.150.012500	0.350	3,296.-	12.50 mm 1/2"
60.150.013200	0.350	3,296.-	13.20 mm 0.530"
60.150.016000	0.350	3,296.-	16.00 mm 5/8"
60.150.019000	0.350	3,296.-	19.00 mm 3/4"
60.150.022400	0.350	3,296.-	22.40 mm 7/8"
60.150.025000	0.350	3,296.-	25.00 mm 1"
60.150.026500	0.350	3,296.-	26.50 mm 1.06"
60.150.031500	0.350	3,392.-	31.50 mm 1 1/4"
60.150.037500	0.350	3,392.-	37.50 mm 1 1/2"
60.150.045000	0.350	3,392.-	45.00 mm 1 3/4"
60.150.050000	0.350	3,392.-	50.00 mm 2"
60.150.053000	0.350	3,392.-	53.00 mm 2.12"
60.150.063000	0.350	3,392.-	63.00 mm 2 1/2"
60.150.075000	0.350	3,392.-	75.00 mm 3"
60.150.090000	0.350	3,392.-	90.00 mm 3 1/2"
60.150.100000	0.350	3,392.-	100.00 mm 4"
60.150.106000	0.350	3,392.-	106.00 mm 4.24"
60.150.125000	0.350	3,392.-	125.00 mm 5"

Item No.	weight ^{appr.} (kg)	CZK	Mesh gauge
100 mm Ø x 40 mm height			
of stainless steel with wire gauze			
60.108.000020	0.150	7,264.-	20 µm 635 Mesh
60.108.000025	0.150	4,256.-	25 µm 500 Mesh
60.108.000032	0.150	4,256.-	32 µm 450 Mesh
60.108.000038	0.150	3,232.-	38 µm 400 Mesh
60.108.000045	0.150	2,912.-	45 µm 325 Mesh
60.108.000053	0.150	2,656.-	53 µm 270 Mesh
60.108.000063	0.150	1,984.-	63 µm 230 Mesh
60.108.000075	0.150	1,984.-	75 µm 200 Mesh
60.108.000090	0.150	1,984.-	90 µm 170 Mesh
60.108.000106	0.150	1,984.-	106 µm 140 Mesh
60.108.000125	0.150	1,984.-	125 µm 120 Mesh
60.108.000150	0.150	1,984.-	150 µm 100 Mesh
60.108.000180	0.150	1,984.-	180 µm 80 Mesh
60.108.000212	0.150	1,984.-	212 µm 70 Mesh
60.108.000250	0.150	1,984.-	250 µm 60 Mesh
60.108.000300	0.150	1,984.-	300 µm 50 Mesh
60.108.000355	0.150	1,984.-	355 µm 45 Mesh
60.108.000425	0.150	1,984.-	425 µm 40 Mesh
60.108.000500	0.150	1,984.-	500 µm 35 Mesh
60.108.000600	0.150	2,080.-	600 µm 30 Mesh
60.108.000710	0.150	2,080.-	710 µm 25 Mesh
60.108.000850	0.150	2,080.-	850 µm 20 Mesh
60.108.001000	0.150	2,080.-	1.00 mm 18 Mesh
60.108.001180	0.150	2,080.-	1.18 mm 16 Mesh
60.108.001400	0.150	2,080.-	1.40 mm 14 Mesh
60.108.001700	0.150	2,080.-	1.70 mm 12 Mesh
60.108.002000	0.150	2,080.-	2.00 mm 10 Mesh
60.108.002360	0.150	2,080.-	2.36 mm 8 Mesh
60.108.002800	0.150	2,080.-	2.80 mm 7 Mesh
60.108.003350	0.150	2,080.-	3.35 mm 6 Mesh
60.108.004000	0.150	2,080.-	4.00 mm 5 Mesh
60.108.004750	0.150	2,112.-	4.75 mm 4 Mesh
60.108.005600	0.150	2,112.-	5.60 mm 3.5 Mesh
60.108.006300	0.150	2,112.-	6.30 mm 1/4"
60.108.006700	0.150	2,112.-	6.70 mm 0.265"
60.108.008000	0.150	2,112.-	8.00 mm 5/16"
60.108.009500	0.150	2,112.-	9.50 mm 3/8"
60.108.011200	0.150	2,112.-	11.20 mm 7/16"
60.108.012500	0.150	2,112.-	12.50 mm 1/2"
60.108.013200	0.150	2,176.-	13.20 mm 0.530"
60.108.016000	0.150	2,176.-	16.00 mm 5/8"
60.108.019000	0.150	2,176.-	19.00 mm 3/4"
60.108.022400	0.150	2,944.-	22.40 mm 7/8"
60.108.025000	0.150	2,944.-	25.00 mm 1"
60.108.026500	0.150	2,944.-	26.50 mm 1.06"
60.108.031500	0.150	2,944.-	31.50 mm 1 1/4"
60.108.037500	0.150	2,944.-	37.50 mm 1 1/2"
60.108.045000	0.150	2,944.-	45.00 mm 1 3/4"

Test sieves cannot be returned!

Item No.	weight <small>appr. (kg)</small>	CZK	Mesh gauge
----------	----------------------------------	-----	------------

150 mm Ø x 50 mm height of stainless steel with wire gauze

60.117.000020	0.200	15,104.-	20 µm 635 Mesh
60.117.000025	0.200	8,032.-	25 µm 500 Mesh
60.117.000032	0.200	5,056.-	32 µm 450 Mesh
60.117.000038	0.200	4,608.-	38 µm 400 Mesh
60.117.000045	0.200	3,168.-	45 µm 325 Mesh
60.117.000053	0.200	2,720.-	53 µm 270 Mesh
60.117.000063	0.200	2,560.-	63 µm 230 Mesh
60.117.000075	0.200	2,112.-	75 µm 200 Mesh
60.117.000090	0.200	2,112.-	90 µm 170 Mesh
60.117.000106	0.200	2,112.-	106 µm 140 Mesh
60.117.000125	0.200	2,112.-	125 µm 120 Mesh
60.117.000150	0.200	2,112.-	150 µm 100 Mesh
60.117.000180	0.200	2,112.-	180 µm 80 Mesh
60.117.000212	0.200	2,112.-	212 µm 70 Mesh
60.117.000250	0.200	2,112.-	250 µm 60 Mesh
60.117.000300	0.200	2,112.-	300 µm 50 Mesh
60.117.000355	0.200	2,112.-	355 µm 45 Mesh
60.117.000425	0.200	2,112.-	425 µm 40 Mesh
60.117.000500	0.200	2,112.-	500 µm 35 Mesh
60.117.000600	0.200	2,112.-	600 µm 30 Mesh
60.117.000710	0.200	2,112.-	710 µm 25 Mesh
60.117.000850	0.200	2,112.-	850 µm 20 Mesh
60.117.001000	0.200	2,240.-	1.00 mm 18 Mesh
60.117.001180	0.200	2,240.-	1.18 mm 16 Mesh
60.117.001400	0.200	2,240.-	1.40 mm 14 Mesh
60.117.001700	0.200	2,240.-	1.70 mm 12 Mesh
60.117.002000	0.200	2,240.-	2.00 mm 10 Mesh
60.117.002360	0.200	2,240.-	2.36 mm 8 Mesh
60.117.002800	0.200	2,592.-	2.80 mm 7 Mesh
60.117.003350	0.200	2,592.-	3.35 mm 6 Mesh
60.117.004000	0.200	2,592.-	4.00 mm 5 Mesh
60.117.004750	0.200	2,592.-	4.75 mm 4 Mesh
60.117.005600	0.200	2,592.-	5.60 mm 3.5 Mesh
60.117.006300	0.200	2,592.-	6.30 mm 1/4"
60.117.006700	0.200	2,592.-	6.70 mm 0.265"
60.117.008000	0.200	2,592.-	8.00 mm 5/16"
60.117.009500	0.200	2,592.-	9.50 mm 3/8"
60.117.011200	0.200	3,040.-	11.20 mm 7/16"
60.117.012500	0.200	3,040.-	12.50 mm 1/2"
60.117.013200	0.200	3,040.-	13.20 mm 0.530"
60.117.016000	0.200	3,040.-	16.00 mm 5/8"
60.117.019000	0.200	3,040.-	19.00 mm 3/4"
60.117.022400	0.200	3,040.-	22.40 mm 7/8"
60.117.025000	0.200	3,040.-	25.00 mm 1"
60.117.026500	0.200	3,136.-	26.50 mm 1.06"
60.117.031500	0.200	3,136.-	31.50 mm 1 1/4"
60.117.037500	0.200	3,136.-	37.50 mm 1 1/2"
60.117.045000	0.200	3,136.-	45.00 mm 1 3/4"

Item No.	weight <small>appr. (kg)</small>	CZK	Mesh gauge
----------	----------------------------------	-----	------------

305 mm Ø x 40 mm height of stainless steel with wire gauze

60.159.000025	1.000	15,008.-	25 µm 500 Mesh
60.159.000032	1.000	10,624.-	32 µm 450 Mesh
60.159.000038	1.000	8,096.-	38 µm 400 Mesh
60.159.000045	1.000	5,888.-	45 µm 325 Mesh
60.159.000053	1.000	4,640.-	53 µm 270 Mesh
60.159.000063	1.000	4,224.-	63 µm 230 Mesh
60.159.000075	1.000	3,904.-	75 µm 200 Mesh
60.159.000090	1.000	3,904.-	90 µm 170 Mesh
60.159.000106	1.000	3,904.-	106 µm 140 Mesh
60.159.000125	1.000	3,904.-	125 µm 120 Mesh
60.159.000150	1.000	3,904.-	150 µm 100 Mesh
60.159.000180	1.000	3,904.-	180 µm 80 Mesh
60.159.000212	1.000	3,904.-	212 µm 70 Mesh
60.159.000250	1.000	3,904.-	250 µm 60 Mesh
60.159.000300	1.000	3,904.-	300 µm 50 Mesh
60.159.000355	1.000	3,904.-	355 µm 45 Mesh
60.159.000425	1.000	3,904.-	425 µm 40 Mesh
60.159.000500	1.000	3,904.-	500 µm 35 Mesh
60.159.000600	1.000	3,904.-	600 µm 30 Mesh
60.159.000710	1.000	3,904.-	710 µm 25 Mesh
60.159.000850	1.000	3,904.-	850 µm 20 Mesh
60.159.001000	1.000	3,904.-	1.00 mm 18 Mesh
60.159.001180	1.000	3,904.-	1.18 mm 16 Mesh
60.159.001400	1.000	3,904.-	1.40 mm 14 Mesh
60.159.001700	1.000	3,904.-	1.70 mm 12 Mesh
60.159.002000	1.000	3,904.-	2.00 mm 10 Mesh
60.159.002360	1.000	3,904.-	2.36 mm 8 Mesh
60.159.002800	1.000	4,736.-	2.80 mm 7 Mesh
60.159.003350	1.000	4,736.-	3.35 mm 6 Mesh
60.159.004000	1.000	4,736.-	4.00 mm 5 Mesh
60.159.004750	1.000	4,736.-	4.75 mm 4 Mesh
60.159.005600	1.000	4,736.-	5.60 mm 3.5 Mesh
60.159.006300	1.000	4,736.-	6.30 mm 1/4"
60.159.006700	1.000	4,736.-	6.70 mm 0.265"
60.159.008000	1.000	4,736.-	8.00 mm 5/16"
60.159.009500	1.000	4,736.-	9.50 mm 3/8"
60.159.011200	1.000	5,056.-	11.20 mm 7/16"
60.159.012500	1.000	5,056.-	12.50 mm 1/2"
60.159.013200	1.000	5,056.-	13.20 mm 0.530"
60.159.016000	1.000	5,056.-	16.00 mm 5/8"
60.159.019000	1.000	5,056.-	19.00 mm 3/4"
60.159.022400	1.000	5,056.-	22.40 mm 7/8"
60.159.025000	1.000	5,056.-	25.00 mm 1"
60.159.026500	1.000	5,376.-	26.50 mm 1.06"
60.159.031500	1.000	5,376.-	31.50 mm 1 1/4"
60.159.037500	1.000	5,376.-	37.50 mm 1 1/2"
60.159.045000	1.000	5,376.-	45.00 mm 1 3/4"
60.159.050000	1.000	5,376.-	50.00 mm 2"
60.159.053000	1.000	5,376.-	53.00 mm 2.12"
60.159.063000	1.000	5,376.-	63.00 mm 2 1/2"
60.159.075000	1.000	5,376.-	75.00 mm 3"
60.159.090000	1.000	5,376.-	90.00 mm 3 1/2"
60.159.100000	1.000	5,376.-	100.00 mm 4"
60.159.106000	1.000	5,376.-	106.00 mm 4.24"
60.159.125000	1.000	5,376.-	125.00 mm 5"

SIEVING

Sieve Shakers
Evaluation Software
Test Sieves



Test Sieves

- according to ASTM E 11
- optical inspection of the aperture size
- with laser-engraved serial number
- inspection certificate or calibration certificate available

Proven Quality

Each Retsch Test Sieve is supplied with a **COMPLIANCE CERTIFICATE**.

Retsch Test Sieves are available with an **INSPECTION CERTIFICATE** according to ISO 3310-1 (e.i. EN 10204 3.1.B). This inspection certificate shows the exact measuring data of the mesh. The surcharge for this certificate is 800.- CZK.

Please refer to page 23 how to configure the item number if you wish to order an inspection certificate for your test sieve.



Test sieves cannot be returned!

■ SIEVING

Sieve Shakers
Evaluation Software
Test Sieves



Test Sieves

- according to ASTM E 11
- optical inspection of the aperture size
- with laser-engraved serial number
- inspection certificate or calibration certificate available

Proven Quality

Each Retsch Test Sieve is supplied with a **COMPLIANCE CERTIFICATE**.

Retsch Test Sieves are available with an **INSPECTION CERTIFICATE** according to ISO 3310-1 (e.i. EN 10204 3.1.B). This inspection certificate shows the exact measuring data of the mesh. The surcharge for this certificate is 800.- CZK.

Please refer to page 23 how to configure the item number if you wish to order an inspection certificate for your test sieve.

TEST SIEVES ACC. TO ASTM E 11



Item No.	weight ^{appr.} (kg)	CZK	Mesh gauge
400 mm Ø x 65 mm height			
of stainless steel with wire gauze			
60.167.000025	1.600	22,432.-	25 µm 500 Mesh
60.167.000032	1.600	14,912.-	32 µm 450 Mesh
60.167.000038	1.600	13,024.-	38 µm 400 Mesh
60.167.000045	1.600	9,248.-	45 µm 325 Mesh
60.167.000053	1.600	7,616.-	53 µm 270 Mesh
60.167.000063	1.600	6,816.-	63 µm 230 Mesh
60.167.000075	1.600	6,176.-	75 µm 200 Mesh
60.167.000090	1.600	6,176.-	90 µm 170 Mesh
60.167.000106	1.600	6,176.-	106 µm 140 Mesh
60.167.000125	1.600	6,176.-	125 µm 120 Mesh
60.167.000150	1.600	6,176.-	150 µm 100 Mesh
60.167.000180	1.600	6,176.-	180 µm 80 Mesh
60.167.000212	1.600	6,176.-	212 µm 70 Mesh
60.167.000250	1.600	6,176.-	250 µm 60 Mesh
60.167.000300	1.600	6,176.-	300 µm 50 Mesh
60.167.000355	1.600	6,176.-	355 µm 45 Mesh
60.167.000425	1.600	6,176.-	425 µm 40 Mesh
60.167.000500	1.600	6,176.-	500 µm 35 Mesh
60.167.000600	1.600	6,176.-	600 µm 30 Mesh
60.167.000710	1.600	6,176.-	710 µm 25 Mesh
60.167.000850	1.600	6,176.-	850 µm 20 Mesh
60.167.001000	1.600	6,176.-	1.00 mm 18 Mesh
60.167.001180	1.600	6,176.-	1.18 mm 16 Mesh
60.167.001400	1.600	6,176.-	1.40 mm 14 Mesh
60.167.001700	1.600	6,176.-	1.70 mm 12 Mesh
60.167.002000	1.600	6,176.-	2.00 mm 10 Mesh
60.167.002360	1.600	6,176.-	2.36 mm 8 Mesh
60.167.002800	1.600	7,296.-	2.80 mm 7 Mesh

Item No.	weight ^{appr.} (kg)	CZK	Mesh gauge
400 mm Ø x 65 mm height			
of stainless steel with wire gauze			
60.167.003350	1.600	7,296.-	3.35 mm 6 Mesh
60.167.004000	1.600	7,296.-	4.00 mm 5 Mesh
60.167.004750	1.600	7,296.-	4.75 mm 4 Mesh
60.167.005600	1.600	7,296.-	5.60 mm 3.5 Mesh
60.167.006300	1.600	7,296.-	6.30 mm 1/4"
60.167.006700	1.600	7,296.-	6.70 mm 0.265"
60.167.008000	1.600	7,296.-	8.00 mm 5/16"
60.167.009500	1.600	7,296.-	9.50 mm 3/8"
60.167.011200	1.600	8,640.-	11.20 mm 7/16"
60.167.012500	1.600	8,640.-	12.50 mm 1/2"
60.167.013200	1.600	8,640.-	13.20 mm 0.530"
60.167.016000	1.600	8,640.-	16.00 mm 5/8"
60.167.019000	1.600	8,640.-	19.00 mm 3/4"
60.167.022400	1.600	8,640.-	22.40 mm 7/8"
60.167.025000	1.600	8,640.-	25.00 mm 1"
60.167.026500	1.600	9,568.-	26.50 mm 1.06"
60.167.031500	1.600	9,568.-	31.50 mm 1 1/4"
60.167.037500	1.600	9,568.-	37.50 mm 1 1/2"
60.167.045000	1.600	9,568.-	45.00 mm 1 3/4"
60.167.050000	1.600	9,568.-	50.00 mm 2"
60.167.053000	1.600	9,952.-	53.00 mm 2.12"
60.167.063000	1.600	9,952.-	63.00 mm 2 1/2"
60.167.075000	1.600	9,952.-	75.00 mm 3"
60.167.090000	1.600	9,952.-	90.00 mm 3 1/2"
60.167.100000	1.600	9,952.-	100.00 mm 4"
60.167.106000	1.600	9,952.-	106.00 mm 4.24"
60.167.125000	1.600	9,952.-	125.00 mm 5"

Test sieves cannot be returned!

Retsch® SIEVES WITH PERFORATED PLATE

Item No.	weight ^{appr.} (kg)	CZK	Mesh gauge
----------	------------------------------	-----	------------

1) Shape	200 mm Ø x 50 mm height			305 mm Ø x 40 mm height		400 mm Ø x 65 mm height		Mesh gauge
	●	■	▬	●	■	●	■	
	.1YY. =	.198.	.190.	.180.	.146.	.138.	.162.	
60.1YY.001000	4,256.-	-	6,080.-	9,376.-	-	13,536.-	-	1.00 mm
60.1YY.001120	4,256.-	-	-	9,376.-	-	13,536.-	-	1.12 mm
60.1YY.001180	*4,256.-	-	-	9,376.-	-	13,536.-	-	1.18 mm
60.1YY.001250	4,256.-	-	-	9,376.-	-	13,536.-	-	1.25 mm
60.1YY.001400	*4,256.-	-	-	9,376.-	-	13,536.-	-	1.40 mm
60.1YY.001600	*4,256.-	-	-	9,376.-	-	13,536.-	-	1.60 mm
60.1YY.001700	*4,256.-	-	6,080.-	9,376.-	-	13,536.-	-	1.70 mm
60.1YY.001800	4,256.-	-	6,080.-	9,376.-	-	13,536.-	-	1.80 mm
60.1YY.001900	-	-	6,080.-	-	-	-	-	1.90 mm
60.1YY.002000	4,256.-	-	6,080.-	9,376.-	-	13,536.-	-	2.00 mm
60.1YY.002200	-	-	6,080.-	-	-	-	-	2.20 mm
60.1YY.002240	4,256.-	-	6,080.-	9,376.-	-	13,536.-	-	2.24 mm
60.1YY.002360	4,256.-	-	-	9,376.-	-	13,536.-	-	2.36 mm
60.1YY.002500	4,256.-	-	6,080.-	9,376.-	-	13,536.-	-	2.50 mm
60.1YY.002800	4,256.-	-	6,080.-	9,376.-	-	13,536.-	-	2.80 mm
60.1YY.003150	4,256.-	-	-	9,376.-	-	13,536.-	-	3.15 mm
60.1YY.003350	4,256.-	-	-	9,376.-	-	13,536.-	-	3.35 mm
60.1YY.003550	4,256.-	-	6,080.-	9,376.-	-	13,536.-	-	3.55 mm
60.1YY.004000	4,256.-	4,256.-	-	5,216.-	5,216.-	7,968.-	7,968.-	4.00 mm
60.1YY.004500	4,256.-	4,256.-	-	5,216.-	5,216.-	7,968.-	7,968.-	4.50 mm
60.1YY.004750	4,256.-	4,256.-	-	5,216.-	5,216.-	7,968.-	7,968.-	4.75 mm
60.1YY.005000	4,256.-	4,256.-	-	5,216.-	5,216.-	7,968.-	7,968.-	5.00 mm
60.1YY.005600	4,256.-	4,256.-	-	5,216.-	5,216.-	7,968.-	7,968.-	5.60 mm
60.1YY.006300	4,256.-	4,256.-	-	5,216.-	5,216.-	7,968.-	7,968.-	6.30 mm
60.1YY.006700	4,256.-	4,256.-	-	5,216.-	5,216.-	7,968.-	7,968.-	6.70 mm
60.1YY.007100	4,256.-	4,256.-	-	5,216.-	5,216.-	7,968.-	7,968.-	7.10 mm
60.1YY.008000	4,256.-	4,256.-	-	5,216.-	5,216.-	7,968.-	7,968.-	8.00 mm
60.1YY.009000	4,256.-	4,256.-	-	5,216.-	5,216.-	7,968.-	7,968.-	9.00 mm
60.1YY.009500	4,256.-	4,256.-	-	5,216.-	5,216.-	7,968.-	7,968.-	9.50 mm
60.1YY.010000	4,256.-	4,256.-	-	5,216.-	5,216.-	7,968.-	7,968.-	10.00 mm
60.1YY.011200	4,256.-	4,256.-	-	5,216.-	5,216.-	7,968.-	7,968.-	11.20 mm
60.1YY.012500	4,256.-	4,256.-	-	5,216.-	5,216.-	7,968.-	7,968.-	12.50 mm
60.1YY.013200	4,256.-	4,256.-	-	5,216.-	5,216.-	7,968.-	7,968.-	13.20 mm
60.1YY.014000	4,256.-	4,256.-	-	5,216.-	5,216.-	7,968.-	7,968.-	14.00 mm
60.1YY.016000	4,256.-	4,256.-	-	5,216.-	5,216.-	7,968.-	7,968.-	16.00 mm
60.1YY.018000	4,256.-	4,256.-	-	5,216.-	5,216.-	7,968.-	7,968.-	18.00 mm
60.1YY.019000	4,256.-	4,256.-	-	5,216.-	5,216.-	7,968.-	7,968.-	19.00 mm
60.1YY.020000	4,256.-	4,256.-	-	5,216.-	5,216.-	7,968.-	7,968.-	20.00 mm
60.1YY.022400	4,256.-	4,256.-	-	5,216.-	5,216.-	7,968.-	7,968.-	22.40 mm
60.1YY.025000	4,256.-	4,256.-	-	5,216.-	5,216.-	7,968.-	7,968.-	25.00 mm
60.1YY.026500	4,256.-	4,256.-	-	5,216.-	5,216.-	7,968.-	7,968.-	26.50 mm
60.1YY.028000	4,256.-	4,256.-	-	5,216.-	5,216.-	7,968.-	7,968.-	28.00 mm
60.1YY.031500	4,256.-	4,256.-	-	5,216.-	5,216.-	7,968.-	7,968.-	31.50 mm
60.1YY.035500	4,256.-	4,256.-	-	5,216.-	5,216.-	7,968.-	7,968.-	35.50 mm
60.1YY.037500	4,256.-	4,256.-	-	5,216.-	5,216.-	7,968.-	7,968.-	37.50 mm
60.1YY.040000	4,256.-	4,256.-	-	5,216.-	5,216.-	7,968.-	7,968.-	40.00 mm
60.1YY.045000	4,256.-	4,256.-	-	5,216.-	5,216.-	7,968.-	7,968.-	45.00 mm
60.1YY.050000	4,256.-	4,256.-	-	5,632.-	5,632.-	8,672.-	8,672.-	50.00 mm
60.1YY.053000	4,256.-	4,256.-	-	5,632.-	5,632.-	8,672.-	8,672.-	53.00 mm
60.1YY.056000	4,256.-	4,256.-	-	5,632.-	5,632.-	8,672.-	8,672.-	56.00 mm
60.1YY.063000	4,256.-	4,256.-	-	5,632.-	5,632.-	8,672.-	8,672.-	63.00 mm
60.1YY.071000	4,256.-	4,256.-	-	5,632.-	5,632.-	8,672.-	8,672.-	71.00 mm
60.1YY.075000	4,256.-	4,256.-	-	5,632.-	5,632.-	8,672.-	8,672.-	75.00 mm
60.1YY.080000	4,256.-	4,256.-	-	5,632.-	5,632.-	8,672.-	8,672.-	80.00 mm
60.1YY.090000	4,256.-	4,256.-	-	5,632.-	5,632.-	8,672.-	8,672.-	90.00 mm
60.1YY.100000	4,256.-	4,256.-	-	5,632.-	5,632.-	8,672.-	8,672.-	100.00 mm
60.1YY.106000	4,256.-	4,256.-	-	5,632.-	5,632.-	8,672.-	8,672.-	106.00 mm
60.1YY.112000	4,256.-	4,256.-	-	5,632.-	5,632.-	8,672.-	8,672.-	112.00 mm
60.1YY.125000	4,256.-	4,256.-	-	5,632.-	5,632.-	8,672.-	8,672.-	125.00 mm

1) Shapes	● Round hole according to ISO 3310-2	*Made of brass
	■ Square hole according to ISO 3310-2	
	▬ Slotted hole (mesh gauge x 20 mm) according to ISO 5223	

■ SIEVING

Sieve Shakers
Evaluation Software
Test Sieves



Test Sieves

■ according to ISO 3310-2 and ISO 5223

Proven Quality

Each Retsch Test Sieve is supplied with a **COMPLIANCE CERTIFICATE.**



Sample Dividers

Feeders
Dryers
Cleaners
Pellet Press



Sample Divider PT 100

- for pourable powders and granulates
- feed size: up to 10 mm
- division into 6, 8 or 10 representative samples



Rotating Tube Divider PK 1000

- for pourable powders and granulates
- feed size: up to 10 mm
- division into 1, 2 or 3 representative samples



Sample Splitter RT

- for bulk materials
- feed size: < 4 mm up to max. 50 mm
- division into 2 representative samples

Item No.	weight	app. (kg)	CZK	Item
Sample Divider PT 100				
Set "comfort"				
3)	40.534.0005	40.000	167,360.-	PT 100, for 220-240 V, 50 Hz, including dividing head 8 quick-release outlets, DR 100 "standard" set and wide-mouth bottles
3)	40.534.0006	40.000	167,360.-	PT 100, for 110-120 V, 60 Hz, including dividing head 8 quick-release outlets, DR 100 "standard" set and wide-mouth bottles
Drive unit				
(Please order dividing head, sample receptacles, vibratory feeder/stand separately)				
	40.534.0002	19.700	62,720.-	PT 100, for 100-120/200-240 V, 50-60 Hz
Dividing heads for feed sizes up to 10 mm				
1)	42.793.0003	3.900	54,080.-	Dividing head of aluminium hard anodized, with 6 quick-release sample outlets
1)	42.793.0001	4.600	58,240.-	Dividing head of aluminium hard anodized, with 8 quick-release sample outlets
1)	42.793.0002	5.900	66,880.-	Dividing head of aluminium hard anodized, with 10 quick-release sample outlets
1)	42.793.0007	3.500	53,440.-	Dividing head of POM, with 8 quick-release sample outlets
Dividing heads for feed sizes up to 5 mm				
2)	42.793.0009	3.500	59,200.-	Dividing head of aluminium hard-anodized, with 8 quick-release outlets
	42.018.0001	0.700	8,032.-	Support with beakers 30 ml and lids for dividing head 42.793.0009
	42.156.0001	0.100	128.-	Spare beaker with cover 30 ml, 10 pieces
Accessories				
	22.523.0001	4.200	1,376.-	Wide-mouth bottles, 250 ml, 10 pieces - for PT 100 and PK 1000
	22.523.0002	4.500	1,536.-	Wide-mouth bottles, 500 ml, 10 pieces - for PT 100 and PK 1000
	22.523.0003	1.700	1,728.-	Duran laboratory bottles, 100 ml, 10 pieces - for dividing head 42.793.0009
	22.523.0004	2.500	2,016.-	Duran laboratory bottles, 250 ml, 10 pieces - for dividing head 42.793.0009
	22.523.0005	3.800	2,432.-	Duran laboratory bottles, 500 ml, 10 pieces - for dividing head 42.793.0009
	03.785.0146	0.780	6,720.-	Hopper, stainless steel, volume 2.8 l (for PT100 used without DR100)
	03.742.0013	0.020	1,312.-	Protective dust cap for hopper, of POM
Rotating Tube Divider PK 1000				
complete with 10 wide-mouth bottles 500 ml and with reject collector 30 l				
3)	40.411.0010	47.000	194,880.-	PK 1000 for 220-240 V, 50 Hz, standard set, complete with Vibratory feeder DR 100, feeding kit with push-fit feed chute 75 mm and bottom cone with max. dividing ratio 1 : 5
3)	40.411.0011	47.000	194,880.-	PK 1000 for 100-120 V, 60 Hz, standard set, complete with Vibratory feeder DR 100, feeding kit with push-fit feed chute 75 mm and bottom cone with max. dividing ratio 1 : 5
Drive Unit				
(Please order bottom cone, feeding device separately)				
with 10 wide-mouth bottles 500 ml and with reject collector 30 l				
	40.411.0001	36.000	103,360.-	PK 1000 for 220-240 V, 50/60 Hz
	40.411.0006	36.000	103,360.-	PK 1000 for 100-120 V, 50/60 Hz
Bottom cone and accessories PK 1000				
	42.787.0001	2.500	47,680.-	1 adjustable sample outlets, slot width 159 mm, max. dividing ratio 1 : 5
	42.787.0003	2.500	72,320.-	2 adjustable sample outlets, slot width 110 mm, max. dividing ratio 2 x 1 : 7.2
	42.787.0004	3.000	91,840.-	3 adjustable sample outlets, slot width 53 mm, max. dividing ratio 3 x 1 : 15
	05.010.0004	3.000	6,784.-	Reject collector, 30 l
Sample Splitter RT 6.5 and RT 12.5				
(incl. 3 receptacles 2.5 litres each of tin plate, stand of coated sheet steel and dividing head made of stainless steel)				
	40.610.0001	3.500	11,488.-	Sample Splitter RT 6.5 with 12 slots 6.3 mm
	40.610.0002	3.500	11,488.-	Sample Splitter RT 12.5 with 18 slots 12.5 mm
	42.147.0001	0.200	608.-	Spare receptacle 2.5 litres (for RT 6.5 and RT 12.5), 1 piece
Sample Splitter RT 25, RT 37.5, RT 50 and RT 75				
(incl. 3 receptacles 8 litres each, stand and dividing head, all made of galvanized sheet)				
	40.610.0003	21.500	21,984.-	Sample Splitter RT 25 with 16 slots 25.0 mm
	40.610.0004	21.500	21,984.-	Sample Splitter RT 37.5 with 12 slots 37.5 mm
	40.610.0005	21.500	21,984.-	Sample Splitter RT 50 with 8 slots 50.0 mm
	40.610.0006	21.500	21,984.-	Sample Splitter RT 75 with 6 slots 75.0 mm
	42.147.0002	2.700	4,416.-	Spare receptacle 8 litres (for RT 25, RT 37.5, RT 50 and RT 75), 1 piece
1)	for wide mouth bottles			
2)	for Duran laboratory bottles			
3)	Vibratory Feeder DR 100 see page 37			

Item No.	weight <small>appr. (kg)</small>	CZK	Item
Vibratory Feeder DR 100			
Set "standard" (for the use with PT 100, please order stand separately)			
70.937.0054	11.500	44,160.-	DR 100 for 220-240 V, 50 Hz, complete with feeding kit (push-fit feed chute 40 mm, holder for push-fit feed chute, hopper 2.8 litres and fixture for hopper)
70.937.0055	11.500	44,160.-	DR 100 drive unit for 110-120 V, 60 Hz, complete with feeding kit (push-fit feed chute 40 mm, holder for push-fit feed chute, hopper 2.8 litres and fixture for hopper)
42.742.0011	2.500	9,696.-	Stand for vibratory feeder DR 100 on PT 100
Vibratory Feeder for SK 100 comfort / SR 200 / SR 300 / PK 1000 (Please order stand separately (not required for PK 1000))			
70.937.0056	11.500	45,120.-	DR 100 for 220-240 V, 50 Hz, complete with feeding kit (push-fit feed chute 75 mm, holder for push-fit feed chute, hopper 3.5 litres and fixture for hopper)
70.937.0057	11.500	45,120.-	DR 100 for 110-120 V, 60 Hz, complete with feeding kit (push-fit feed chute 75 mm, holder for push-fit feed chute, hopper 3.5 litres and fixture for hopper)
22.742.0003	0.500	3,168.-	Stand for vibratory feeder DR 100 on SK 100 comfort / SR 200 / SR 300
DR 100 Drive Unit (Please order feeding kit separately)			
70.937.0003	10.000	33,600.-	DR 100 drive unit for 220-240 V, 50 Hz
70.937.0012	10.000	33,600.-	DR 100 drive unit for 110-120 V, 60 Hz
Feeding kits DR 100			
72.020.0001	1.100	10,560.-	Feeding kit (push-fit feed chute 15 mm, holder, hopper 2.8 litres and fixture)
72.020.0002	1.200	10,560.-	Feeding kit (push-fit feed chute 40 mm, holder, hopper 2.8 litres and fixture)
72.020.0003	1.400	11,520.-	Feeding kit (push-fit feed chute 75 mm, holder, hopper 3.5 litres and fixture)
Push-fit chutes DR 100, lenght 210 mm			
03.729.0035	0.150	2,240.-	Push-fit feed chute of stainless steel, width 15 mm for holder 15/40
03.729.0036	0.250	2,240.-	Push-fit feed chute of stainless steel, width 40 mm for holder 15/40
03.729.0037	0.300	2,240.-	Push-fit feed chute of stainless steel, width 75 mm for holder 75
03.729.0040	0.200	8,640.-	Push-fit feed chute of stainless steel, width 75/40 mm for holder 75
03.729.0051	0.300	4,480.-	Push-fit feed chute of aluminium, width 40 mm for holder 15/40
03.729.0043	0.250	4,480.-	Push-fit feed chute of aluminium, width 75 mm for holder 75
03.729.0039	0.200	4,480.-	Push-fit feed chute of stainless steel, 36 mm V-shape
Holders for push-fit chutes DR 100			
03.018.0007	0.075	960.-	Holder 15/40 for push-fit feed chute 15 mm, 40 mm and V-shape
03.018.0008	0.130	960.-	Holder 75 for push-fit feed chute 75 mm
Hoppers DR 100			
03.785.0146	0.500	6,720.-	Feed hopper of stainless steel, for chutes 15 and 40 mm, hopper volume 2.8 litres
02.785.0019	0.780	7,680.-	Feed hopper of stainless steel, for chutes 75 and 75/40 mm, hopper volume 3.5 litres
03.785.0151	0.500	7,680.-	Feed hopper of stainless steel, for chutes 15 and 40 mm, hopper volume 0.6 litres
03.785.0152	0.400	7,680.-	Feed hopper of aluminium, for chutes 15 and 40 mm, hopper volume 0.6 litres
03.785.0159	0.500	7,680.-	Feed hopper of stainless steel for V-chute hopper volume 2.8 litres
Fixtures for hoppers DR 100			
02.266.0167	0.210	1,600.-	Fixture for hopper 0.6 litres and 2.8 litres
02.266.0168	0.280	1,600.-	Fixture for hopper 3.5 litres
Vibratory Feeder DR 100 for ZM 200			
22.936.0001	11.500	52,160.-	Feeder kit DR 100 for 220-240 V, 50, Hz complete with feeding kit with 40 mm push-fit feed chute, length 250 mm, hopper, stand and data cable
22.936.0002	11.500	52,160.-	Feeder kit DR 100 for 110-120 V, 60 Hz, complete with feeding kit with 40 mm push-fit feed chute, length 250 mm, hopper, stand and data cable
Accessories for feeder kit DR 100 for ZM 200 (Holders for push-fit feed chutes, feed hoppers and fixtures see above)			
22.020.0002	1.500	18,880.-	Feeding kit (push-fit feed chute 75/40 mm, length 250 mm, holder, hopper 3.5 litres and fixture)
22.020.0001	2.000	14,720.-	Feeding kit (push-fit feed chute V-shape, length 250 mm, holder, hopper 2.8 litres for V-chute and fixture)
03.729.0054	0.200	2,240.-	Push-fit feed chute of stainless steel, width 40 mm, length 250 mm
03.729.0056	0.200	8,640.-	Push-fit feed chute of stainless steel, width 75/40 mm, length 250 mm
03.729.0055	0.250	4,480.-	Push-fit feed chute of stainless steel, V-form, width 40 mm, length 250 mm

Sample Dividers

Feeders

Dryers

Cleaners

Pellet Press



Vibratory Feeder DR 100

- for pourable bulk materials
- feed size: up to 12 mm
- versatile
- modular design:
 - (A) drive unit
 - (B) holder for push-fit feed chute
 - (C) push-fit feed chute
 - (D) hopper
 - (E) fixture for hopper



■ ASSISTING

Sample Dividers
Feeders

Dryers

Cleaners

Pellet Press



Rapid Dryer TG 100

- rapid, gentle drying
- effective temperature range from 40 to 120 °C
- air throughput from 900 to 1800 l/min



Ultrasonic Baths UR 1 / UR 2 / UR 3

- effective, fast, gentle cleaning e.g. for sieves up to 203 mm (8") Ø resp. 400 mm Ø
- volume 5.7 / 42 / 45 litre
- cleaning duration 1-2 min



Pellet Press PP 25

- hydraulic press with manual operation
- maximum pressure 25 tons
- dies 32 / 40 mm dia.

ASSISTING

Retsch®

Item No.	weight	price (kg)	CZK	Item
Rapid Dryer TG 100 incl. quick-action clamping lid with filter bag (Please order drying chamber separately)				
70.736.0001	18.000		114,880.-	TG 100 for 230 V, 50 Hz
70.736.0003	18.000		114,880.-	TG 100 for 220 V, 60 Hz

Accessories TG 100				
72.783.0001	2.500		23,648.-	Drying chamber of glass, 6 litres
72.783.0002	1.000		16,064.-	Drying chamber of stainless steel, 6 litres
72.002.0002	1.500		41,280.-	Drying chamber of glass, 3 x 0.3 litres (incl. holder)

Accessories TG 100				
72.643.0013	1.270		26,464.-	Quick-action clamping lid with filter insert (exchangeable), incl. 10 replacement filters
72.143.0001	0.240		2,944.-	Filter insert for quick-action clamping lid, 10 pieces
72.643.0014	1.000		8,672.-	Quick-action clamping lid with filter bag
02.186.0015	0.100		1,504.-	Filter bag for quick-action clamping lid
72.107.0001	0.050		2,816.-	Cover with filter insert for 0.3 litres drying chambers (3 pieces)
03.186.0024	0.010		160.-	Filter insert for 0.3 litres drying chamber (1 piece)
02.045.0010	0.250		10,240.-	Spare drying chamber of glass, 0.3 litres
02.186.0016	0.100		1,504.-	Filter bag for drying chamber 0.3 litres
72.001.0005	0.500		5,120.-	Adapter for drying sieves 200/203 mm Ø

Universal Ultrasonic Baths UR 1 / UR 2 / UR 3						
70.791.0001	5.000		40,320.-	UR 1 for 230 V, 50/60 Hz,	oscillation tank: 24.5 cm Ø x 13 cm,	5.7 litres
70.791.0002	5.000		40,320.-	UR 1 for 110 V, 60 Hz,	oscillation tank: 24.5 cm Ø x 13 cm,	5.7 litres
70.791.0003	21.000		132,160.-	UR 2 for 230 V, 50 Hz,	oscillation tank: 52.0 cm Ø x 20 cm,	42 litres
70.791.0004	21.000		132,160.-	UR 2 for 110 V, 60 Hz,	oscillation tank: 52.0 cm Ø x 20 cm,	42 litres
70.791.0005	27.500		125,440.-	UR 3 for 220 - 240 V, 50/60 Hz,	oscillation tank: 50.0 x 30 x 30 cm,	45 litres
70.791.0006	27.500		125,440.-	UR 3 for 110 - 130 V, 50/60 Hz,	oscillation tank: 50.0 x 30 x 30 cm,	45 litres

Accessories UR						
09.107.0249	0.500		3,808.-	Cover of stainless steel, for UR 1		
09.107.0250	1.300		9,024.-	Cover of stainless steel, for UR 2		
09.107.0395	0.700		4,800.-	Cover of stainless steel, for UR 3		
09.145.0001	0.500		5,216.-	Basket of stainless steel, for UR 1		
09.145.0002	1.500		12,832.-	Basket of stainless steel, for UR 2		
09.145.0003	1.500		12,544.-	Basket of stainless steel, for UR 3		
05.620.0001	1.100		1,056.-	Detergent TICKOPUR RW 77, 1 litre		

1) Pellet Press PP 25 (Please order die separately)				
20.750.0001	50.000		147,520.-	Pellet Press PP 25, hydraulic, manual
Evacuable dies for Pellet Press PP 25				
22.458.0001	3.400		42,560.-	Die for 32 mm dia. pellets
22.458.0002	5.400		59,200.-	Die for 40 mm dia. pellets

Accessories				
22.005.0001	0.860		5,984.-	Aluminum beaker, sloping walls, for 32 mm dia. pellets, 1000 pcs
22.005.0002	0.800		6,880.-	Aluminum beaker, sloping walls, for 40 mm dia. pellets, 600 pcs
22.440.0001	0.350		1,472.-	Licowax® C micropowder binder (formerly known as Hoechst Wax), 250 g
22.440.0002	0.250		4,928.-	Multimix binder, 500 x 0.25 g tablets

1) Prices subject to change without notice

www.retsch.com

Standard Terms and Conditions of Business and Delivery

1. General points

- Deliveries and services shall be provided exclusively on the basis of the following Standard Terms and Conditions. These are an integral part of all contracts concluded and apply also to all future business relations even if not expressly agreed on again.
- Once the order is placed, at the latest however once the delivery or service has been taken, these terms and conditions shall be deemed to have been accepted by the customer.
- Any other terms and conditions or deviating counter confirmations of the customer shall not be binding on us, even if we do not expressly contradict them. They shall require our express written acceptance in order to be legally effective.
- Supplements, amendments or collateral agreements shall require our written confirmation to be effective. This shall also apply to the revision of the written form requirement.

2. Offer and conclusion of contract

- Catalogues, advertising brochures, price lists, cost estimates and offers shall be subject to alteration without notice and nonbinding. All documents in this context, such as illustrations, drawings, guide analyses, specifications of dimensions etc. may only be regarded as approximate unless expressly declared binding. We reserve title and copyright to catalogues, drawings, cost estimates and other documents; they may not be made accessible to third parties.
- The customer shall be liable for the correctness and completeness of the dimensions and customer samples he gives and for the correctness of the material he has to produce, such as drawings, templates, samples and suchlike and other information which influence the suitability of the elements ordered for the intended use. It shall also be the customer's responsibility that the use of this material does not infringe on any patent or other industrial property rights of third parties. In this respect, the customer shall indemnify us against any liability claims from third parties. We shall not be obliged to check that the industrial property rights of third parties will not be violated by the execution in accordance with the material placed at our disposal.
- Material samples or customer's samples shall be delivered free to our premises by the customer. We may scrap the material samples sent to us unless their return has been expressly requested either at the point of time of delivery or within four weeks of sending. The person/company delivering the material samples shall bear all risks connected with the transport, storage and processing of the material sample. This shall apply in particular to damage which the material sample itself or its combination with any contact substance causes (toxic, caustic, explosive materials) unless there is a case of liability in accordance with no. 9.1. We charge for the analysis of material samples on the basis of our respectively valid hourly rates. If a purchase is made on the basis of the analysis, the analysis costs will be offset against the purchase price.
- The contract shall only be formed when the order is acknowledged in writing and conforms to the contents of the order acknowledgement or in consequence of the acceptance of the delivery by the customer. If there is no written acknowledgement, our delivery dockets or our invoices shall apply simultaneously as order acknowledgement.
- We reserve the right even after sending the order acknowledgement to make technical alterations to the contract item during the delivery period if with due consideration to our interests in the alteration the customer can be reasonably expected to accept this. The same shall apply to weight and dimensional differences customary in this business.

3. Delivery

- The delivery times given in the order acknowledgement are non-binding approximate dates. They shall only be deemed to be binding if we expressly identify them as being binding.
- The delivery period shall begin with the date of the written order acknowledgement; if it is necessary to consult with the customer, then only after clarification of all points. If deposits have been agreed, the delivery period shall not begin until receipt of the first payment.
- The delivery period shall be deemed to have been observed if by the time of its expiration the delivery item has left our factory or notification of readiness for dispatch has been given.
- In justified special cases, in particular for operational reasons, we shall be entitled to make partial deliveries and provide partial services after prior notification and to charge for these separately.
- We shall not be responsible for delays in delivery and services due to force majeure or on account of other events beyond our control and which can be proven to have a considerable influence on the completion or delivery of the delivery item – these include in particular strikes, lock-outs, official directives, shortages of materials, non availability or impossibility of delivery of the goods etc. – and where the above affect our sub-suppliers too even when the terms and dates have been agreed with binding force and also within a default. We shall inform the customer immediately of the beginning and end of such hindrances. In the event of hindrances of a temporary nature, we shall be entitled to postpone the delivery or services by the duration of the hindrance plus a reasonable start-up period. In the case of impossibility, we shall have the right to withdraw completely or partially from the contract on account of the non-fulfilled part. The customer may demand a statement from us as to whether we shall withdraw or deliver within a reasonable period. If we do not give this information, the customer may withdraw if it is not reasonable to expect him to accept the delivery because of the delay.
- In all cases our deliveries are subject to our obtaining correct and punctual deliveries from our suppliers. The reservation as to our obtaining the supplies shall apply subject to our concluding appropriate covering business in time and on condition that we are not responsible ourselves for our suppliers' delay in delivery.
- In so far as we are responsible for the non-observation of the delivery periods or dates assured with binding effect or if we are in default of delivery/service, the customer shall be entitled after the expiration of a reasonable extension of time to withdraw from the contract; any further obligation to provide compensation shall be governed by no. 9 of these Standard Terms and Conditions.
- If the customer is in default of acceptance of delivery, we shall be entitled after a reasonable extension of time in conjunction with a threat of refusal to demand compensation for non-fulfilment amounting to 15% of the agreed order sum without prejudice to the possibility of proving a greater loss. The customer for his part shall retain the right to prove that damage did not occur or was much less.

4. Dispatch and passage of risk

- Place of performance for the delivery shall be the site of the respective delivering works.
- The goods shall always be dispatched at the customer's own risk, even if partial deliveries are sent or if we take on other services such as e.g. shipping costs or delivery.
- In the absence of special instructions, we shall choose the packaging, the transport route and the means of transport as we judge best. The acceptance of the goods we dispatch without objection by the railway company, post, forwarders or other carriers shall apply as confirmation of the perfect quality of the packaging when dispatched and shall rule out any liability on our part with respect to inappropriate packaging or loading for damage or loss caused en route unless we are not forcibly liable because of willful intent or gross negligence.
- In every case, - e.g. even in the case of FOB and CIF business - the risk of accidental loss/damage or accidental deterioration in the state of the goods shall pass to the customer once the goods are handed over to the forwarder, the Federal Railway Company or other carriers, at the latest however once the goods leave our warehouse or, in the case of direct delivery, leave our delivery works. If the goods are to be collected by the customer, the risk shall pass to the customer once notification of availability has been sent.
- Goods taken before dispatch shall be deemed to have been delivered in accordance with the agreed conditions.
- If the dispatch or the acceptance of delivery is delayed on the request of or due to the fault of the customer, the risk of accidental loss or damage or accidental deterioration shall pass to the customer at the point of time at which we notified him in writing or orally of the readiness for dispatch. In this case we shall be entitled as of one month after notification of readiness for dispatch to charge storage costs of 0.5 % of the invoice sum per month of the delay in delivery. The customer shall retain the right to prove that the costs did not arise at all or were much lower.
- If the customer is in default of acceptance, we may avail ourselves of our right in accordance with no. 3.8 or have free disposal of the delivery item and instead supply a delivery item of the same kind on the terms of the contract within a reasonable period.
- We shall be entitled to insure the risk of transport and to charge this to the customer unless the customer gives us other instructions in writing.

5. Prices and terms of payment

- The prices are to be understood as pure net prices ex delivery works or warehouse - excluding packaging, insurance, export/import levies and other incidental costs - subject to the addition of the respective statutory value-added tax. We shall charge for the packaging at cost price. Crate packaging if returned carriage paid in perfect condition will be refunded at two thirds of the calculated value.
- If more than four months elapse between the conclusion of the contract and the date of delivery, we may in the absence of an agreement to the contrary charge at the prices valid at the time of the delivery. However, if this amounts to more than just a slight increase in price, the customer may withdraw from the contract then.
- In the absence of an express agreement to the contrary, payment shall fall due on arrival of the invoice. If the payment arrives on or before 14 days of the date of the invoice, we shall allow a discount of 2 %, payments arriving later shall be paid without any deduction at the latest 30 days after the date of invoice.
- In the case of default, which arises 30 days after the date of the invoice, we shall be entitled to demand interest at the level at which our commercial bank currently charges interest for business loans, at least however interest amounting to 5 % above the respectively valid base lending rate. The customer shall retain the right to prove that a loss did not occur at all or was much lower. We shall be at liberty to claim further damage caused by default.
- All our receivables shall fall due for payment immediately even when bills of exchange or cheques have been given if the terms of payment are not met and there is no justifiable reason why not or if after the conclusion of the contract a serious deterioration in the customer's financial circumstances comes to our attention. We shall be entitled then to carry out any outstanding deliveries and services against advance payment(s) or the provision of security only or to reduce or completely revoke assured trade credit in this case. If advance payment(s) or security have not been provided even after the expiration of a reasonable extension of time, we shall be entitled to withdraw from the contract completely or partially. For this case, we expressly reserve the right to assert claims for compensation for the unnecessarily incurred expense, the lost profit and further damage.
- Even when asserting complaints or counterclaims, the customer shall only be entitled to offset or retain payment if the counterclaims have been legally established or are undisputed.

6. Reservation of ownership

- We reserve title to all goods we supply until the customer has paid all debts from the business relationship including the claims arising subsequently from contracts concluded simultaneously or at a later date and from any current account balance and until completely released from contingent liabilities which we have entered into in the customer's interest.
- The customer must take the reservation goods with care and keep them safely and carry out the usual inspection, maintenance and upkeep work at his own expense. For the duration of the ownership reservation the reserved goods may neither be pledged nor assigned as security by the customer. We must be informed in writing immediately of access by third parties to the reserved goods, for example by way of attachment or confiscation or damage or destruction.
- In the event of breach of contract by the customer, in particular in the case of default in the payment of secured debts, we shall be entitled to take back the reserved goods. The taking-back shall only represent a withdrawal from the contract if we declare this in writing. After taking back, we shall have the right of exploitation whereby the proceeds shall be offset against the customer's debts after deduction of reasonable realisation costs.
- a) The customer shall be authorised and entitled within the scope of the ordinary course of business, which does not include the cheque-bill exchange procedure, to resell the reserved goods. If the customer defaults on payments from the business relation with us, we may prohibit the re-sale. If the customer allows the buyer time to pay the purchase price, he shall only be entitled to re-sell if he also reserves ownership to the goods sold to the buyer.
b) The customer shall assign to us even at this point in time the purchase price claims or other remuneration claims from the re-sale or other realisation business including all subsidiary rights. They shall serve as security to the same extent as the reserved goods. The customer shall only be entitled and authorised to re-sell or use the reserved goods in another way if it has been ensured that the associated claims pass to us, in particular that there is no covenant against assignment in the relationship between the customer and the party buying from the customer.
c) If the reserved goods are sold by the customer together with other goods which we did not supply, the assignment of the claim from the sale shall only apply to the amount of the invoice value of the respective reserved goods sold. In the sale of goods, to which we have co-ownership shares in accordance with number 6.5, the assignment of the claim shall apply to the sum of the value of this co-ownership share. If the assigned claim is included in an open account, the customer shall assign even at this point in time a corresponding part of the balance - including the corresponding part of the closing balance - from the current account to us. If interim balances are drawn up and their carry forward agreed, the claim to which we are entitled in accordance with the preceding regulation is to be treated as assigned to us from the intermediate balance for the next balance.
- d) The customer shall be entitled up to the point of our revocation to collect the claims assigned to us. We may not exert this right of revocation as long as the customer duly meets his obligations to pay debts arising out of the business relationship with us and as long as we do not become aware of any circumstances capable of considerably reducing the customer's credit-worthiness. If the pre-conditions for the exercise of the right of revocation exist, we may demand that the customer assign to us any claims for return he might have against the party/parties who bought from him and give us the names of his debtors and all details required to collect these debts and hand over the relevant documents to us and notify the debtors of the assignment. Moreover, we shall also be entitled ourselves to give notice of assignment to the debtors.
- The customer shall be entitled to process the reserved goods in the ordinary course of business as long as he is not in default of payment. The processing or transforming of the reserved goods is done for us as manufacturer in the sense of § 950 BGB (German Civil Code) without obliging us. The processed or transformed goods shall be deemed to be reserved goods in the sense of number 6.1. In the event of the customer processing the reserved goods with other items which do not belong to us, we shall acquire co-ownership to the new item in proportion of the value of the reserved goods to the total value of the other items used; the point of time of the processing is decisive here. If the reserved goods are blended, mixed, or combined with other items and if in this way we lose our ownership to the reserved goods, the customer shall assign to us even at this point in time the ownership rights to which he is entitled to the blended or mixed stock or to the unified item in proportion to the value of the reserved goods to the total of the values of the other blended, mixed or combined items; the point of time at which the event occurred is decisive here. The goods to which we have co-ownership shall be held by the customer in safe keeping for us without charge in accordance with the preceding regulations. The terms under the entire number 6. applicable to the reserved goods shall apply analogously to the co-ownership shares arising in accordance with this clause number 6.5.
- At our request at any time, the customer must give us information on the whereabouts of the reserved goods and on claims arising from the resale or other realisation.
- If the value of the securities established for us exceed the secured claims in total by more than 10 %, we shall be obliged at the customer's request to release the corresponding amount of the securities we choose.
- If the ownership reservation in accordance with the preceding terms is not legally effective under the law of the Land (the respective German constituent state) in which the reserved goods are located, the security which comes closest to it under the law of this Land shall be deemed to be agreed instead. If any actions are required of the customer in this context, the customer shall be obliged to carry out these actions at our request.

7. Warranty

- The customer must examine the goods received immediately on their arrival, look for defects and check the quality and assured features. Recognisable defects in the goods, incorrect or incomplete deliveries, deviations in quantities or dimensions and shipping and packaging damage must be noted on the consignment note or delivery docket by the customer immediately on the arrival of the goods and written notification must be sent to us without delay but at the latest however seven days after delivery of the goods. If the customer does not notify us of any defects within this period, the goods shall be deemed to be free of defects and approved as conforming to the contract. Notification of defects which are not discovered even after careful examination within this period must be sent to us in writing immediately on discovery. The same shall apply to defects occurring during the warranty period. Every warranty shall lapse if we are not notified of a defect in good time.
- The warranty obligation for defective products shall be restricted to rectification or substitute delivery at our discretion. All replaced products and parts shall pass to our ownership in as far as we did not own them already.
- If a defect covered by warranty cannot be eliminated by rectification or substitute delivery within a reasonable time, the customer may withdraw from the contract with respect to the defective product or demand a reduction in the purchase price.
- Our warranty shall expire if the delivered goods are altered or handled inappropriately.
- For products manufactured outside, our liability shall be limited to the assignment of the warranty claims to which we are entitled vis-à-vis our suppliers.
- Warranty claims shall become statute in 24 months from the date of the acceptance of the delivery of the goods. The warranty shall be based on use in the laboratory in single-shift operation. For multiple-shift utilisation the warranty time shall be reduced accordingly.
- The preceding paragraphs cover conclusively the warranty we provide for our products and goods. Any further liability shall be determined solely in accordance with the regulations in no. 9 of these Standard Terms and Conditions.

8. Software

- The warranty for software is determined in accordance with the preceding regulations in no. 7 with the following modification: we guarantee that the software given to the customer conforms to our program specifications provided that the software is installed on the device systems we designated and in accordance with our instructions. The warranty shall apply only to such software defects which are reproducible at any time. We commit ourselves to eliminate all defects which affect contract-conforming utilisation, however we reserve the right to eliminate the defect at our discretion by installing an improved software version or by giving instructions on how to circumvent the effect of the defect.
- The customer shall acquire a non-exclusive and non-transferrable right of utilisation of the programs and appertaining documentation for the appropriate use of our delivery for internal operation. The purchaser shall not be entitled to any further rights to the programs and documentation, in particular we shall continue to hold the copyrights. Unless we give our prior written consent the purchaser shall not be permitted to make available to third parties, to copy or duplicate in any other way, to decompile, disassemble or reverse engineer programs, documentation and if applicable supplements delivered at a later date.

9. Liability

- We shall be liable for damage in so far as the damage is due to willful intent or gross negligence of our legal representatives or vicarious agents or if contractually assured features are missing which were to protect the customer against untypical, excessive loss risks. In cases of slight negligence we shall be liable only in the event of an infringement of essential contractual obligations or if there is insurance cover and this shall be limited to the typical loss foreseeable at the conclusion of the contract.
- The preceding regulations shall apply to all compensation claims irrespective of the legal grounds, such as positive violation of contractual duty, culpability at the conclusion of the contract, unauthorised access etc.
- The liability as manufacturer in accordance with the law on product liability shall remain unaffected by the preceding liability disclaimer or restriction clause contained in no. 9.1.

10. Concluding provisions

- The court responsible for Haan shall be the jurisdiction for deliveries and payments (including suits on cheques and bills of exchange) and all disputes arising between the parties. However, we reserve the right to sue the customer at any other statutory jurisdiction. The relations between the contracting parties shall be regulated exclusively under the law applicable in the Federal Republic of Germany to the exclusion of the UI Convention on Contracts for the International Sale of Goods.
- Only with our written approval may the customer assign his rights and obligations under this contract to a third party. However, this approval shall not be necessary if the assignment is in the context of an effective extended ownership reservation which the customer agrees with a third party in the context of the regulations in the above number 6.
- Should any individual terms of the preceding conditions or parts of these be ineffective, this shall not affect the effectiveness of the other terms. An ineffective term in these conditions shall be replaced by the effective term which comes closest in economic result to the ineffective term.



Headquarters:



Retsch GmbH
Rheinische Straße 36
42781 Haan
Germany

Fon +49 (0) 21 29 / 55 61-0

Fax +49 (0) 21 29 / 87 02

E-mail info@retsch.com

Web www.retsch.com

Our headquarters, subsidiaries and official distributors ensure extensive support for our international customers in over 75 countries around the world.

You will find a current list of all distributors at www.retsch.com.



Retsch Inc.
74 Walker Lane
Newtown, PA 18940
United States

Fon +1 267 757 0351

Fax +1 267 757 0358

E-mail info@retsch-us.com

Web www.retsch-us.com



Retsch U.K. Ltd.
Whitehouse Street, Hunslet
Leeds LS10 1AD
Great Britain

Fon +44 113 2220 266

Fax +44 113 2465 649

E-mail info@retsch.co.uk

Web www.retsch.co.uk



Retsch Co. Ltd.
5-8-8 Shinjuku
Shinjuku-ku, Tokyo 160-0022
Japan

Fon +81 3 5367 2651

Fax +81 3 5367 2652

E-mail info@retsch.co.jp

Web www.retsch.co.jp



a VERDER company

