

# General Medicine and ENT Instruments

## THE BEST IN QUALITY AND PERFORMANCE

High tech materials, the latest production processes and innovative design are three factors which contribute to the excellent quality of HEINE Otoscopes. They produce excellent image quality with uniquely bright and reflex-free illumination of the tympanum and auditory canal.

HEINE Otoscopes are available for various applications with distal fiber optic (F.O.) or direct bulb illumination with bright HEINE XHL® Xenon halogen bulbs.





HEINE Otoscopes



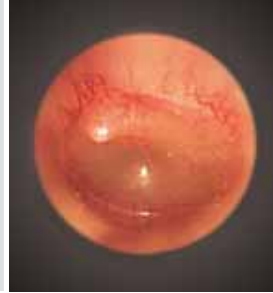
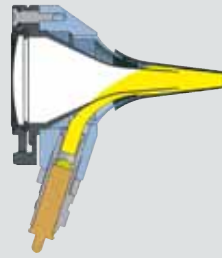
	BETA 200	K 180	mini3000 F.O.	BETA 100	K 100	Operating otoscope	mini 3000
<b>Housing construction</b>							
Metal	<input type="checkbox"/>			<input type="checkbox"/>		<input type="checkbox"/>	
Polycarbonate		<input type="checkbox"/>	<input type="checkbox"/>		<input type="checkbox"/>		<input type="checkbox"/>
<b>Viewing window</b>							
Glass	<input type="checkbox"/>			<input type="checkbox"/>			
Acrylic		<input type="checkbox"/>	<input type="checkbox"/>		<input type="checkbox"/>		<input type="checkbox"/>
3x magnification	<input type="checkbox"/>	<input type="checkbox"/>	<input type="checkbox"/>	<input type="checkbox"/>	<input type="checkbox"/>	2,5x	<input type="checkbox"/>
<b>Illumination</b>							
F.O.	<input type="checkbox"/>	<input type="checkbox"/>	<input type="checkbox"/>				
Direct				<input type="checkbox"/>	<input type="checkbox"/>	<input type="checkbox"/>	<input type="checkbox"/>
<b>Instrument size</b>							
Professional	<input type="checkbox"/>	<input type="checkbox"/>		<input type="checkbox"/>	<input type="checkbox"/>	<input type="checkbox"/>	
Compact			<input type="checkbox"/>				<input type="checkbox"/>
<b>Available power sources</b>							
Battery 2.5V	<input type="checkbox"/>	<input type="checkbox"/>	<input type="checkbox"/>	<input type="checkbox"/>	<input type="checkbox"/>	<input type="checkbox"/>	<input type="checkbox"/>
Rechargeable battery 2.5V			<input type="checkbox"/>				<input type="checkbox"/>
Rechargeable battery 3.5V	<input type="checkbox"/>	<input type="checkbox"/>		<input type="checkbox"/>	<input type="checkbox"/>	<input type="checkbox"/>	
<b>Tips</b>							
Reusable tips	<input type="checkbox"/>	<input type="checkbox"/>	<input type="checkbox"/>				<input type="checkbox"/>
Reusable Specula				<input type="checkbox"/>	<input type="checkbox"/>	<input type="checkbox"/>	
AllSpec Disposable tips	<input type="checkbox"/>	<input type="checkbox"/>	<input type="checkbox"/>	<input type="checkbox"/>	<input type="checkbox"/>	<input type="checkbox"/>	<input type="checkbox"/>
UniSpec Disposable Specula				<input type="checkbox"/>	<input type="checkbox"/>	<input type="checkbox"/>	
Tip-Adaptor				<input type="checkbox"/>	<input type="checkbox"/>	<input type="checkbox"/>	
<b>Insufflation Bulb</b>							
Insufflation port	<input type="checkbox"/>	<input type="checkbox"/>	<input type="checkbox"/>	<input type="checkbox"/>	<input type="checkbox"/>		
Page	009	011	012	015	017	019	020

\* with Tip-Adapter

\*\* Optional insufflation port connector available



High-quality Fiber Optic (F.O.) illumination with high-intensity XHL Xenon Halogen bulb.



## HEINE BETA 200® Fiber Optic (F.O.) Otoscope

### The ultimate in performance and quality

Solid, all-metal construction. A quality instrument for the physician's office with Fiber Optic (F.O.) illumination.

- ∴ **All-metal housing matt-chrome-plated.** Durable, long-lasting and easy to clean.
- ∴ **Instrument head matt-black inside.** Eliminates reflexes.
- ∴ **Distal Fiber Optic (F.O.) illumination with XHL Xenon Halogen Technology.** Homogenous, reflex-free illumination of ear canal and tympanum.
- ∴ **Large, scratch-resistant glass viewing window with 3x magnification.** Unobstructed view, distortion-free image.
- ∴ **Airtight window seal.** Reliable test of tympanic mobility.
- ∴ **Swivelling viewing window built into instrument.** Useful for instrumentation, cannot be mislaid.



∴ Fiber Optic (F.O.) illumination

∴ All-metal housing

∴ 3x magnification

∴ Silica glass viewing window

BETA 200 F.O. Otoscope	2.5V	3.5V
with 4 reusable tips, without handle	<b>B-001.11.501</b>	<b>B-002.11.501</b>
same, without tips, without handle	<b>B-001.11.500</b>	<b>B-002.11.500</b>
XHL Xenon Halogen spare bulb	<b>X-001.88.077</b>	<b>X-002.88.078</b>

For information on diagnostic combined sets, please see pages 157 – 159.

## HEINE BETA 200® Fiber Optic (F.O.) ENT Diagnostic Sets

Set complete with: **BETA 200 Fiber Optic (F.O.) Otoscope**

1 set of reusable tips (B-000.11.111)

10 AllSpec disposable tips

spare bulb

hard case





BETA 200 F.O. Otoscope Sets	2.5V	3.5V (NiMH)	3.5V
BETA battery handle	<b>B-141.10.118</b>		
BETA R rechargeable handle for mains socket		<b>B-141.20.376</b>	<b>B-141.27.376</b>
BETA TR rechargeable handle and transformer with plug-in transformer		<b>B-141.20.384</b>	<b>B-141.27.384</b>
BETA NT rechargeable handle and NT 300 charger		<b>B-141.20.420</b>	
BETA L rechargeable handle and NT 300 charger			<b>B-141.29.420</b>

: Rechargeable handle with charge status display in the bottom insert.

## HEINE BETA 200® Fiber Optic (F.O.) Diagnostic Sets





Set complete with: **BETA200 Ophthalmoscope, BETA200 F.O. Otoscope,**  
1 AllSpec set of reusable tips (B-000.11.111)  
10 disposable tips and one spare bulb each  
hard case

BETA200 Diagnostic Sets	2.5V	3.5V (NiMH)	3.5V 
BETA battery handle	<b>A-132.10.118</b>		
BETA R rechargeable handle for mains socket		<b>A-132.20.376</b>	<b>A-132.27.376</b>
BETA TR rechargeable handle and transformer with plug-in transformer		<b>A-132.20.384</b>	<b>A-132.27.384</b>
BETA NT rechargeable handle and NT 300 charger		<b>A-132.20.420</b>	
 BETA L rechargeable handle and NT 300 charger			<b>A-132.29.420</b>

As above, but with additional **multi-purpose illuminator**



BETA 200 Diagnostic Sets	2.5V	3.5V (NiMH)	3.5V 
BETA battery handle	<b>A-134.10.118</b>		
BETA R rechargeable handle for mains socket		<b>A-134.20.376</b>	<b>A-134.27.376</b>
BETA TR rechargeable handle and transformer with plug-in transformer		<b>A-134.20.384</b>	<b>A-134.27.384</b>
BETA NT rechargeable handle and NT 300 charger		<b>A-134.20.420</b>	
 BETA L rechargeable handle and NT 300 charger			<b>A-134.29.420</b>

: Rechargeable handle with charge status display in the bottom insert.

**HEINE K 180® Fiber Optic (F.O.) Otoscope**

**The standard, all around Fiber Optic Otoscope**



Otoscope with Fiber Optic (F.O.) illumination constructed of light, high-impact polycarbonate and **3x magnification** scratch-resistant acrylic viewing window. Otherwise technically identical to the BETA200 F.O. Otoscope.

K180 F.O. Otoscope	2.5V	3.5V
with 4 reusable tips, without handle	<b>B-001.11.551</b>	<b>B-002.11.551</b>
same, without tips, without handle	<b>B-001.11.550</b>	<b>B-002.11.550</b>
XHL Xenon Halogen spare bulb	<b>X-001.88.077</b>	<b>X-002.88.078</b>

- ∴ Fiber Optic (F.O.) illumination
- ∴ Polycarbonate construction

**HEINE K 180® Fiber Optic (F.O.) Diagnostic Sets**



Set complete with: **K 180 Fiber Optic (F.O.) Otoscope**  
 1 set of reusable tips (B-000.11.111)  
 soft pouch

K180 F.O. Otoscope Sets	2.5V	3.5V (NiMH)	3.5V
BETA battery handle	<b>B-181.10.118</b>		
BETA R rechargeable handle for mains socket		<b>B-181.20.376</b>	<b>B-181.27.376</b>
BETA TR rechargeable handle and transformer with plug-in transformer		<b>B-181.20.384</b>	<b>B-181.27.384</b>
BETA NT rechargeable handle and NT 300 charger		<b>B-181.20.420</b>	
BETA L rechargeable handle and NT 300 charger			<b>B-181.29.420</b>



Set complete with **K 180 Ophthalmoscope, K 180 Fiber Optic (F.O.) Otoscope**  
 1 set of reusable tips (B-000.11.111)  
 hard case

K180 Combined Diagnostic Sets	2.5V	3.5V (NiMH)	3.5V
BETA battery handle	<b>A-279.10.118</b>		
BETA R rechargeable handle for mains socket		<b>A-279.20.376</b>	<b>A-279.27.376</b>
BETA TR rechargeable handle and transformer with plug-in transformer		<b>A-279.20.384</b>	<b>A-279.27.384</b>
BETA NT rechargeable handle and NT 300 charger		<b>A-279.20.420</b>	
BETA L rechargeable handle and NT 300 charger			<b>A-279.29.420</b>

## HEINE mini 3000® Fiber Optic (F.O.) Otoscope

**Compact pocket otoscope with Fiber Optic (F.O.) illumination**

- ∴ Modern pocket otoscope
- ∴ Fiber Optic (F.O.) illumination
- ∴ Switches off automatically
- ∴ Optional rechargeable handle

Modern pocket otoscope in a unique, compact design. Handy and powerful. Can only be used with the mini 3000 handle system. Available in black or blue.

- ∴ **Instrument head matt-black inside.** Eliminates reflexes.
- ∴ **Distal Fiber-Optic (F.O.) illumination with enhanced XHL Xenon Halogen Technology producing 100% more light compared with conventional bulbs.** Homogenous, reflex-free illumination of ear canal and tympanum.
- ∴ **2-piece handle and head.** Easy to maintain, flexible. Compatible with other mini 3000 instrument heads.
- ∴ **Insufflation port.** For pneumatic testing of tympanic mobility. Please order connector separately.
- ∴ **Viewing window with 3x magnification** and optimized casing surface for razor-sharp images and minimal reflection. Swivelling viewing window built into instrument.
- ∴ **High-quality handle: Chrome-finish upper section/refined plastic.** Shockproof, sturdy, non-slip.
- ∴ **Attachment clip with integrated on/off switch.** Secure. Switches off automatically when returned to the pocket. 20.000 switch cycles guaranteed.
- ∴ **Replaceable batteries.** Size AA, or optional rechargeable battery with mini NT charger\*.

mini 3000 F.O. Otoscope	2.5V
mini 3000 F.O. Otoscope with mini 3000 battery handle and 1 set (4 pcs.) reusable tips and 5 of both 2.5 and 4 mm disposable tips, with batteries	<b>D-001.70.120</b>
mini 3000 F.O. Otoscope with mini 3000 battery handle and 5 of both 2.5 and 4 mm disposable tips, with batteries	<b>D-001.70.110</b>
mini 3000 F.O. Otoscope with bulb, <b>without handle</b> and without accessories	<b>D-001.70.106</b>
XHL Xenon Halogen spare bulb	<b>X-001.88.105</b>
Insufflation port connector for mini 3000 F.O.	<b>D-000.80.101</b>



\*To upgrade to a rechargeable instrument, with mini NT charger, please see page 142.

HEINE mini 3000® pocket instruments – a complete range of quality diagnostic instruments for your pocket. Available in black or blue. Please specify the colour you prefer when ordering. If not otherwise specified, we will supply black instruments.

HEINE mini 3000® Diagnostic Sets



Set D-851 complete with: **mini 3000 Fiber Optic (F.O.) Otoscope**  
1 set = 4 reusable tips (B-000.11.111)  
10 AllSpec disposable tips  
hard case

mini 3000 Diagnostic Sets	2.5V
mini 3000 battery handle with batteries	<b>D-851.10.021</b>
as above, but with <b>mini 3000 Otoscope</b>	<b>D-851.20.021</b>



Set D-873 complete with: **mini 3000 Ophthalmoscope, mini 3000 F.O. Otoscope,**  
1 set = 4 reusable tips (B-000.11.111)  
5 each of 2.5 and 4 mm dia. AllSpec disposable tips  
hard case

mini 3000 Diagnostic Sets	2.5V
2 mini 3000 battery handles with batteries	<b>D-873.11.021</b>
same but with <b>mini 3000 Otoscope</b>	<b>D-873.21.021</b>



\*To upgrade to a rechargeable instrument, with mini NT charger, please see page 142.

HEINE AllSpec® Disposable tips



Ø 2,5mm    Ø 4 mm

- ∴ **For single use.** Hygienic, no cross-infection.
- ∴ **Original HEINE design.** Firm fit to the otoscope head.
- ∴ **Assured quality.** No sharp edges.



[01]



[02]



[03]

AllSpec Disposable tips (grey) for BETA 200, K 180, mini 3000 F.O., mini 3000 Otoscopes	
Pack of 1000 pcs. 2.5 mm dia. (infants) [03]	<b>B-000.11.128</b>
Pack of 1000 pcs. 4 mm dia. (adults) [03]	<b>B-000.11.127</b>
Case of 10 dispenser packs of 250 tips, 2.5 mm dia (infants) [01]	<b>B-000.11.151</b>
Case of 10 dispenser packs of 250 tips, 4 mm dia (adults) [01]	<b>B-000.11.150</b>
AllSpec Tip-dispenser [02]	<b>B-000.11.148</b>

**AllSpec Tip-dispenser [02]**

**The right size, visible and instantly available.** A clean new tip for each and every patient. Contents: 50 pcs. Ø 2.5 mm and 50 pcs. Ø 4 mm.

## Reusable tips



Ø 2,4mm Ø 3mm Ø 4mm Ø 5mm



Ø 10mm

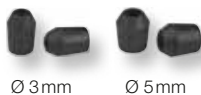
- **Made of high-density SANALON S plastic with smooth external finish.** Easy to clean. All common germicides can be used. Autoclavable at up to 134°C.
- **Ergonomic shape.** Painless atraumatic insertion.
- **Positive locking design.** Firm fit to the otoscope head.

### Reusable tips (black)

for BETA200, K180, mini 3000 F.O., mini 3000 Otoscopes

	1 piece	50 pieces
1 set = 4 pcs. reusable tips SANALON S 2.4/3/4/5mm dia.		<b>B-000.11.111</b>
Reusable tip 2.4 mm dia.	<b>B-000.11.107</b>	<b>B-000.11.207</b>
Reusable tip 3.0 mm dia.	<b>B-000.11.108</b>	<b>B-000.11.208</b>
Reusable tip 4.0 mm dia.	<b>B-000.11.109</b>	<b>B-000.11.209</b>
Reusable tip 5.0 mm dia.	<b>B-000.11.110</b>	<b>B-000.11.210</b>
Reusable nasal speculum 10 mm dia. (only for mini 3000 Otoscopes)	<b>B-000.11.143</b>	<b>B-000.11.206</b>

## Soft Disposable tips for reusable tips



Ø 3mm Ø 5mm

- **Fits over the end of the AllSpec tip to protect the auditory canal.**

### Soft disposable tips (black)

Soft disposable tip 3 mm dia. 40 pcs./1 pack	<b>B-000.11.141</b>
Soft disposable tip 5 mm dia. 40 pcs./1 pack	<b>B-000.11.142</b>

## Insufflation Bulb



- **For pneumatic testing.**

Insufflation bulb for BETA 200 , K180, BETA 100 and K100 Otoscopes	<b>B-000.11.240</b>
Insufflation bulb for mini 3000 F.O. Otoscope with connector	<b>D-000.80.102</b>
Insufflation port connector for mini 3000 F.O. Otoscope	<b>D-000.80.101</b>



Bright XHL Xenon Halogen direct illumination.



### HEINE BETA 100® Diagnostic Otoscope

#### Diagnostic Otoscope with an all-metal housing

An otoscope with direct Xenon Halogen illumination in an elegant all-metal instrument head. Unusually-versatile in combination with nasal and spreadable specula for easy instrumentation. Large-diameter viewing window with 3x magnification made of non-scratch optical glass. The instrument head is matt-black inside to eliminate reflexes.

For use with reusable specula and UniSpec disposable specula. With tip-adaptor (B-000.11.306) it is also possible to use AllSpec disposable tips.



- ∴ All-metal housing
- ∴ Silica glass viewing window
- ∴ Easy instrumentation



[01]

- ∴ **All-metal housing.** Exceptionally tough and durable.
- ∴ **Instrument head matt-black inside.** Eliminates reflexes.
- ∴ **XHL Xenon Halogen Technology.** Extremely bright, white light.
- ∴ **Large, scratch-resistant glass viewing window with 3x magnification.** Unobstructed view, distortion-free image.
- ∴ **Swivelling viewing window built into instrument.** Useful for instrumentation, cannot be mislaid.
- ∴ **Insufflation port.** Reliable test of tympanic mobility.
- ∴ **Extensive choice of accessories.** Very versatile e. g. for nasal examination.

BETA 100 Diagnostic Otoscope	2.5V	3.5V
with 6 reusable specula, without handle	B-001.11.527	B-002.11.527
without specula, without handle	B-001.11.525	B-002.11.525
XHL Xenon Halogen spare bulb	X-001.88.037	X-002.88.049
Replacement sleeve for bulb. Reduces reflexes. [01]		B-000.11.212



HEINE BETA 100® ENT Diagnostic Sets



Set complete with: **BETA 100 Diagnostic Otoscope**  
 1 set (6 pcs.) of reusable specula (B-000.11.221)  
 10 UniSpec disposable tips  
 spare bulb  
 hard case

BETA 100 Otoscope Sets	2.5V	3.5V (NiMH)	3.5V
BETA battery handle	<b>B-236.10.118</b>		
BETA R rechargeable handle for mains socket		<b>B-236.20.376</b>	<b>B-236.27.376</b>
BETA TR rechargeable handle and transformer with plug-in transformer		<b>B-236.20.384</b>	<b>B-236.27.384</b>
BETA NT rechargeable handle and NT 300 charger		<b>B-236.20.420</b>	
BETA L rechargeable handle and NT 300 charger			<b>B-236.29.420</b>

: Rechargeable handle with charge status display in the bottom insert.

HEINE BETA Diagnostic Set



Set complete: **BETA 200 Ophthalmoscope, BETA 100 Diagnostic Otoscope**,  
 1 set (6 pcs.) of reusable specula (B-000.11.221)  
 10 UniSpec disposable tips  
 one spare bulb each  
 hard case

BETA Diagnostic Sets	2.5V	3.5V (NiMH)	3.5V
BETA battery handle	<b>A-234.10.118</b>		
BETA R rechargeable handle for mains socket		<b>A-234.20.376</b>	<b>A-234.27.376</b>
BETA TR rechargeable handle and transformer with plug-in transformer		<b>A-234.20.384</b>	<b>A-234.27.384</b>
BETA NT rechargeable handle and NT 300 charger		<b>A-234.20.420</b>	
BETA L rechargeable handle and NT 300 charger			<b>A-234.29.420</b>

: Rechargeable handle with charge status display in the bottom insert.

### HEINE K 100® Diagnostic Otoscope

#### Diagnostic Otoscope with a high-impact polycarbonate housing



∴ Polycarbonate construction

∴ Easy instrumentation



[01]

A very cost-effective diagnostic otoscope with direct Xenon Halogen illumination. The head is moulded in high-impact polycarbonate, and features a high quality acrylic viewing window with 3x magnification. Matt black interior to eliminate reflexes.

For use with reusable specula and UniSpec disposable specula. With tip-adaptor (B-000.11.306) it is also possible to use AllSpec disposable tips.

- ∴ **Polycarbonate construction.** Shock-resistant.
- ∴ **Instrument head matt-black inside.** Eliminates reflexes.
- ∴ **XHL Xenon Halogen Technology.** Extremely bright, white light.
- ∴ Large acrylic viewing window with **3x magnification.** Sharply-focused distortion-free image.
- ∴ **Swivelling viewing window built into instrument.** Useful for instrumentation, cannot be mislaid.
- ∴ **Insufflation port.** Reliable test of tympanic mobility.

K100 Diagnostic Otoscope	2.5V	3.5V
with 3 reusable specula 3.5/4.5/5.5 mm dia., without handle	<b>B-001.11.576</b>	<b>B-002.11.576</b>
same, without specula, without handle	<b>B-001.11.575</b>	<b>B-002.11.575</b>

XHL Xenon Halogen spare bulb	<b>X-001.88.037</b>	<b>X-002.88.049</b>
------------------------------	---------------------	---------------------

Replacement cover for bulb [01] Reduces reflexes.		<b>B-000.11.212</b>
---	--	---------------------

### HEINE K 100® ENT Diagnostic Sets

Set complete with: **K100 Diagnostic Otoscope**  
1 set (6 pcs.) of reusable specula (B-000.11.221)  
spare bulb  
soft pouch





Sets K 100 Oscope	2.5V	3.5V (NiMH)	3.5V
BETA battery handle	<b>B-237.10.118</b>		
BETA R rechargeable handle for mains socket		<b>B-237.20.376</b>	<b>B-237.27.376</b>
BETA TR rechargeable handle and transformer with plug-in transformer		<b>B-237.20.384</b>	<b>B-237.27.384</b>
BETA NT rechargeable handle and NT 300 charger		<b>B-237.20.420</b>	
BETA L rechargeable handle and NT 300 charger			<b>B-237.29.420</b>

: Rechargeable handle with charge status display in the bottom insert.

## HEINE K 100® ENT Diagnostic Sets

Set complete with: **K 100 Diagnostic Otoscope**  
3 reusable specula (B-000.11.222)  
soft pouch



Sets K100 Otoscope	2.5V	3.5V (NiMH)	3.5V 
BETA battery handle	<b>B-245.10.118</b>		
BETA R rechargeable handle for mains socket		<b>B-245.20.376</b>	<b>B-245.27.376</b>
BETA TR rechargeable handle and transformer with plug-in transformer		<b>B-245.20.384</b>	<b>B-245.27.384</b>
BETA NT rechargeable handle and NT 300 charger		<b>B-245.20.420</b>	
 BETA L rechargeable handle and NT 300 charger			<b>B-245.29.420</b>

: Rechargeable handle with charge status display in the bottom insert.

### HEINE Operating Otoscope

#### The greatest flexibility and most options for instrumentation



An all-round otoscope for instrumentation under magnification. Both the lens and speculum can be swivelled.  
 Ideal for use with nasal and spreadable specula.

For use with reusable specula and UniSpec disposable specula. With tip-adaptor (B-000.11.306) it is also possible to use AllSpec disposable tips.

- ∴ **Open construction.** Ideal for instrumentation.
- ∴ **XHL Xenon Halogen Technology.** Extremely bright, white light.
- ∴ **Swivelling lens and speculum.** Clears the way for access and examination under magnification and illumination.
- ∴ **2.5x lens in protective frame.** Prevents scratching.
- ∴ **The relative positions of light bulb and speculum can be fixed.** Helps with instrumentation, easily returned to normal position.

HEINE Operating Otoscope	2.5V	3.5V
with 1 set = 6 reusable specula, without handle	<b>B-001.11.494</b>	<b>B-002.11.494</b>
same, without specula, without handle	<b>B-001.11.492</b>	<b>B-002.11.492</b>
XHL Xenon Halogen spare bulb	<b>X-001.88.037</b>	<b>X-002.88.049</b>

### HEINE Operating Otoscope ENT Diagnostic Sets



Set complete with: **Operating Otoscope**  
 1 set (5 pcs.) of reusable specula (B-000.11.221)  
 10 UniSpec disposable tips  
 spare bulb  
 hard case

Operating Otoscope Sets	2.5V	3.5V (NiMH)	3.5V
BETA battery handle	<b>B-188.10.118</b>		
BETA R rechargeable handle for mains socket		<b>B-188.20.376</b>	<b>B-188.27.376</b>
BETA TR rechargeable handle and transformer with plug-in transformer		<b>B-188.20.384</b>	<b>B-188.27.384</b>
BETA NT rechargeable handle and NT 300 charger		<b>B-188.20.420</b>	
BETA L rechargeable handle and NT 300 charger			<b>B-188.29.420</b>

: Rechargeable handle with charge status display in the bottom insert.

## HEINE mini 3000® Otoscope

## Compact pocket otoscope with direct illumination



∴ Modern pocket otoscope

∴ Switches off automatically

∴ Optional rechargeable handle

Modern pocket otoscope in a unique, compact design. Can only be used with the mini 3000 handle system.  
Available in black or blue.

- ∴ **Instrument head matt-black inside.** Eliminates reflexes.
- ∴ **Enhanced XHL Xenon Halogen Technology with 100% more light compared with conventional bulbs.** Very bright, concentrated white light for perfect illumination.
- ∴ **2-piece handle and head.** Easy to maintain, flexible. Compatible with other mini3000 instrument heads.
- ∴ **Viewing window with 3x magnification** and optimized casing surface for razor-sharp images and minimal reflection.
- ∴ **Swivelling viewing window built into instrument.** Useful for instrumentation, cannot be mislaid.
- ∴ **High-quality handle: Chrome-finish upper section/refined plastic.** Shockproof, sturdy, non-slip.
- ∴ **Attachment clip with integrated on/off switch.** Secure. Switches off automatically when returned to the pocket. 20.000 switch cycles guaranteed.
- ∴ **Replaceable batteries.** Size AA, or optional rechargeable battery with mini NT charger\*.

mini 3000 Otoscope	2.5V
mini 3000 Otoscope with mini 3000 battery handle and 1 set (4 pcs.) reusable tips and 5 of both AllSpec disposable tips 2.5 and 4 mm dia., with batteries	<b>D-001.70.220</b>
mini 3000 Otoscope with mini 3000 battery handle and 5 of both AllSpec disposable tips 2.5 and 4 mm dia., with batteries	<b>D-001.70.210</b>
mini 3000 Otoscope with bulb, <b>without handle</b> and without accessories	<b>D-001.70.206</b>
XHL Xenon Halogen spare bulb	<b>X-001.88.110</b>

For information on combined sets, please see pages 157 – 159.



\*To upgrade to a rechargeable instrument, with mini NT charger, please see page 142.

HEINE mini3000® pocket instruments – a complete range of quality diagnostic instruments for your pocket. Available in black or blue. Please specify the colour you prefer when ordering. If not otherwise specified, we will supply black instruments.

### HEINE UniSpec® Disposable Ear Specula



- ∴ **Disposable.** Hygienic and safe.
- ∴ **Original HEINE design and manufacture.** Fit positively to the otoscope.
- ∴ **Assured quality.** No sharp edges.
- ∴ **A clean, new speculum for each and every patient.** The right size visible and instantly available.

#### UniSpec Disposable Ear Specula (grey) for BETA 100, K100, Operating Otoscope

Pack of 1000, 2.5mm dia. (infants) 1000 pcs./1 pack	<b>B-000.11.242</b>
Pack of 1000, 4mm dia. (adults) 1000 pcs./1 pack	<b>B-000.11.241</b>
UniSpec specula dispenser	<b>B-000.11.146</b>

### Reusable Specula



- ∴ **Moulded in high-density SANALON S, smooth surface.** Easy to clean, can be disinfected with conventional solutions. Autoclavable at 134°C.
- ∴ **Ergonomic Design.** Painless and atraumatic insertion.
- ∴ **Metal security lock with bayonet fitting.** Long-lasting, positive fit to the otoscope.

#### Reusable Specula (black) for BETA 100, K100 and Operating Otoscope

1 set = 5 ear specula and 1 nose speculum	<b>B-000.11.221</b>
3 specula 3.5/4.5/5.5mm dia.	<b>B-000.11.222</b>
Ear speculum 2.2mm dia.	<b>B-000.11.215</b>
Ear speculum 2.8mm dia.	<b>B-000.11.216</b>
Ear speculum 3.5mm dia.	<b>B-000.11.217</b>
Ear speculum 4.5mm dia.	<b>B-000.11.218</b>
Ear speculum 5.5mm dia.	<b>B-000.11.219</b>
Nose speculum 10mm dia.	<b>B-000.11.220</b>

### Spreadable Nasal Speculum



- ∴ **All-metal construction.** Anatomically-correct rounded shape. Non-injuring.
- ∴ **For use with Operating Otoscope, BETA 100 Diagnostic Otoscope and Fiber Optic Nasal Illuminator.**

Spreadable Nasal Speculum	<b>B-000.11.231</b>
---------------------------	---------------------

Not recommended for use with K 100 Diagnostic Oscopes.

## Universal Speculum



- ∴ **All-metal construction.** Opens symmetrically from 2.5 to 15 mm.
- ∴ **Rotate ring to open branches.** Stays put in any position.
- ∴ **For use with Operating Otoscope, BETA 100 Diagnostic Otoscope and Fiber Optic Nasal Illuminator.**

Universal Speculum

B-000.11.239

Not recommended for use with K 100 Diagnostic Oscopes.

## Tip-Adaptor



- ∴ **All-metal construction.** Adaptor for AllSpec disposable tips (p. 13) for use with diagnostic (BETA 100, K 100) and operating otoscope.

Tip-Adaptor

B-000.11.306

## Insufflation Bulb



For Diagnostic Oscopes.

- ∴ **For pneumatic testing.**

Insufflation bulb for BETA 100 and K 100 Oscopes

B-000.11.240





**A company makes history and gives a name to outstanding product quality: HEINE.**

Founded in 1946, family owned, rich in tradition and today international market leader in a complete range of diagnostic instruments. HEINE products meet all international standards (ISO/CE) and represent the leading edge in precision and ergonomic design. Ongoing dedication to research and development has created a solid and diverse technology base for continued quality and product leadership. Over 500 employees worldwide contribute to this success.

[www.heine.com](http://www.heine.com)

■ HEINE SUBSIDIARY COMPANIES  
■ HEINE REPRESENTATIVES

**GERMANY**

HEINE Optotechnik GmbH & Co. KG  
82211 Herrsching  
Kientalstr. 7  
Tel. +49 (0) 81 52-38 0  
Fax +49 (0) 81 52-3 82 02  
E-Mail: [info@heine.com](mailto:info@heine.com)

**NORTH AMERICA**

HEINE USA LTD.  
10 Innovation Way  
Dover, NH 03820  
Tel. (603) 7 42-71 03  
Fax (603) 7 42-72 17  
Toll Free (800) 367-4872  
E-Mail: [service@heine-na.com](mailto:service@heine-na.com)

**AUSTRALIA**

HEINE AUSTRALIA PTY. LTD.  
Unit 9, 98 Old Pittwater Road  
P.O. Box 717 Brookvale 2100  
New South Wales  
Tel. +61 (0) 2-99 38 95 00  
Fax +61 (0) 2-99 39 23 05  
E-Mail: [info@heine.com.au](mailto:info@heine.com.au)

**SWITZERLAND**

HEINE (Schweiz) AG  
Tobelackerstr. 9  
CH-8212 Neuhausen am Rheinflall  
Tel. +41 (0) 52-6 72 22 66  
Fax +41 (0) 52-6 72 63 77  
E-Mail: [heine-schweiz@schaffhausen.ch](mailto:heine-schweiz@schaffhausen.ch)

We reserve the right to change specification without notice.

Your distributor

10/10. A-000.00.100 e

**Laboratorní a zdravotnická technika OPTING servis**  
**Bohumínská 788/61 710 00 Ostrava 10**

**telefon: 596 241 785, 596 241 852-i fax,**  
**596 241 960, 603 464 790**  
**[optingservis@optingservis.cz](mailto:optingservis@optingservis.cz)**  
**[www.optingservis.cz](http://www.optingservis.cz)**

