



Early recognition of Malignant Melanoma is becoming increasingly important in Dermatology. In the USA, the annual increase in reported new cases is approximately 5%. In parts of the world with a fair-skinned population the incidence has almost doubled in the last 15 years. Early recognition and diagnosis is the key to improved healing rates. HEINE's long experience as market leader in Dermatoscopy has enabled us to set a new standard for image quality with the DELTA 20 Dermatoscope.

## HEINE DELTA 20® Dermatoscope

### Dermatoscope with LED illumination



∴ Homogeneous, bright LED light

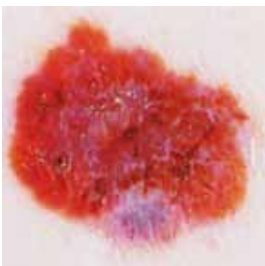
∴ High resolution optics

∴ Diagnosis and documentation

For dermatoscopic examination of pigmented skin lesions and early diagnosis of malignant melanoma. Dermatoscopy oil is applied to the skin to make the outer skin layers more transparent. The DELTA 20 makes structure changes visible. The differential diagnosis of initial malignant melanoma and other pathologies is made easier and more accurate with the DELTA 20.

- ∴ **High resolution optics with achromatic lens system.** 10x magnification, distortion free edge to edge, very large, highly detailed image.
- ∴ **LED illumination close to daylight.** 6 LEDs or, alternatively, lateral illumination from 3 LEDs for improved contrast, virtually unlimited working life.
- ∴ **Adjustable Eyepiece.** Individual focusing, range of correction - 6 to + 6 dpt.
- ∴ **Detailed compendium with photographic atlas included.** Simplifies the differential diagnosis of pigmented lesions.
- ∴ **Digital photography with the dermatoscope** when combined with an adaptor for a digital SLR camera.

(For more information, see the DELTA 20 LED Dermatoscope Brochure.)



DELTA 20 Dermatoscope Head	AV	TL
with contact plate 23 mm dia. with scale and dermatoscopy compendium	K-008.34.201	K-008.34.201 TL
same, without scale	K-008.34.207	K-008.34.207 TL
DELTA20 Dermatoscope Head without contact plate	K-008.34.202	K-008.34.202

Set complete with **DELTA 20 Dermatoscope**, contact plate 23 mm dia. with scale, 10ml. Dermatoscopy oil, dermatoscopy compendium, hard case with:



DELTA 20 Sets	3,5V (NiMH)	3,5V
BETA R rechargeable handle	K-256.20.376	K-256.27.376
BETA NT rechargeable handle with NT300 charger	K-256.20.420	
BETA L rechargeable handle and NT 300 charger		K-256.29.420

: Rechargeable handle with LED charge status display in the bottom insert.

: To order your kit with the TL "Twist Lock" connection style, simply add the suffix "TL" to the end of the item number. I.E. B-141.20.376 TL for the set with Twist Lock.



## HEINE mini 3000® Dermatoscope

### A Dermatoscope in a handy pocket format



∴ Modern pocket dermatoscope

∴ Solid metal construction

∴ Optional rechargeable handle

Modern pocket dermatoscope in a compact design with high quality optics. 10x magnification with focusing optics. Metal threaded connector. Can only be used with the mini 3000 handle system.

- ∴ **10x magnification.** Large, high resolution image.
- ∴ **Solid metal construction.** Durable and tough.
- ∴ **Enhanced XHL Xenon Halogen Technology for more light.**  
Very bright, concentrated white light for perfect illumination.
- ∴ **Attachment clip with integrated on/off switch.** Secure. Switches off automatically when returned to the pocket. 20,000 switch cycles guaranteed.
- ∴ **High quality handle: Chrome finish upper section.** Shockproof, sturdy, non-slip.
- ∴ **2 piece handle and head.** Easy to maintain, flexible.
- ∴ **Detailed compendium with photographic atlas included.** Simplifies the differential diagnosis of pigmented lesions.
- ∴ **Replaceable batteries.** Size AA.

mini 3000 Dermatoscope	2.5V
mini 3000 Dermatoscope with contact plate, mini 3000 battery handle and 10 ml. Dermatoscopy oil	<b>D-001.78.107</b>
mini 3000 Dermatoscope with contact plate <b>with scale</b> , mini 3000 battery handle and 10ml. Dermatoscopy oil	<b>D-001.78.109</b>
with contact plate, with bulb, without handle	<b>D-001.78.106</b>
with contact plate <b>with scale</b> , with bulb, without handle	<b>D-001.78.108</b>
XHL Xenon Halogen spare bulb	<b>X-001.88.109</b>



[01]



[02]



[03]



[04]



[05]

- ∴ **mini NT Rechargeable Upgrade Kit 2.5V.** The new mini NT rechargeable upgrade kit allows you to convert AA battery mini 3000 handles to 2.5V rechargeable handles. The upgrade kit consists of the mini NT charger, 2 mini NT rechargeable batteries and 2 bottom inserts for the mini 3000 rechargeable handles. There is also an upgrade kit available for the mini 2000 as well, see below.

mini NT Rechargeable Upgrade Kit for mini 3000	2.5V
mini NT charger [01], 2 NiMH rechargeable batteries [02], 2 bottom inserts for mini 3000 rechargeable handle [03]	<b>X-001.99.485</b>
mini NT Rechargeable Upgrade Kit for mini 2000	2.5V
mini NT charger [01], 2 NiMH rechargeable batteries [02], 2 bottom inserts for mini 2000 [04], 2 adaptors [05]	<b>X-001.99.486</b>

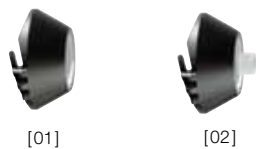
\* For more information on the mini NT charger system see page 121.



HEINE mini 3000® pocket instruments – a complete range of quality diagnostic instruments for your pocket. Available in black or blue. Please specify the color you prefer when ordering. If not otherwise specified, we will supply black instruments.

### Accessories

#### for the DELTA 20 Dermatoscope



##### Contact plate

23mm dia. without scale [01]	K-000.34.203
23mm dia. with scale [01]	K-000.34.204
Small contact plate, 8mm dia. [02] for the examination of inaccessible lesions	K-000.34.205



##### Dermatology oil

Pack of 6 x 10ml. It is applied to the external skin layers, making them transparent.	K-000.34.005
---	--------------



##### SLR Photo adaptor

for Dermatoscope/Digital SLR Camera, with Optics. Wide Field of View, Crisp Image	
SLR Photo adaptor for Canon	K-000.34.185
same, for Nikon	K-000.34.186
same, for Olympus	K-000.34.187



##### Adaptor cord

(1.3m) for instrument/handle	X-000.99.231
------------------------------	--------------



##### BETA Belt Clip

for BETA handle	X-000.99.008
-----------------	--------------

##### Photo Accessory Set

(not shown) includes SLR Photo adaptor, Adaptor cord and BETA Belt Clip	
Photo Accessory Set for Canon	K-000.34.190
same, for Nikon	K-000.34.191
same, for Olympus	K-000.34.192

### Accessories

#### for mini3000 Dermatoscope



##### Contact plate

Contact plate without scale [01]	D-000.78.116
Contact plate with scale [01]	D-000.78.117
Small contact plate, 8mm dia. [02] for the examination of inaccessible lesions	K-000.34.008



##### Dermatology oil

(pack of 6 x 10ml) is applied to the external skin layers, making them transparent	K-000.34.005
--	--------------

For information on HEINE battery and rechargeable handles, see pages 118–121.